

# WF-C878R/WF-C879R Start Here

**IMPORTANT:** Before using this product, make sure you read these instructions and the safety instructions in the online *User's Guide*.

**Note:** This printer is designed for use with Epson® ink supply units (ink packs) only, not third-party ink. For important ink information, visit [www.epson.com/epsonink](http://www.epson.com/epsonink) (U.S.) or [www.epson.ca/epsonink](http://www.epson.ca/epsonink) (Canada) or see your printer box.

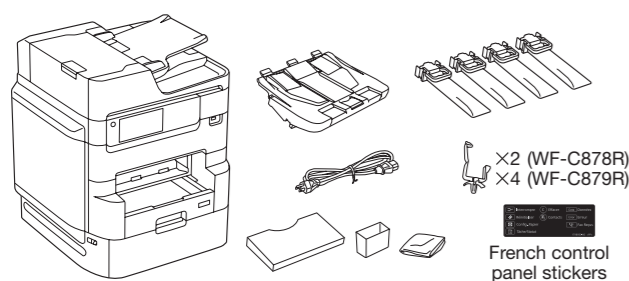
**Important Safety Instructions:** When using telephone equipment, you should always follow basic safety precautions to reduce the risk of fire, electric shock, and personal injury, including the following:

- Do not use the Epson product near water.
- Always keep this guide handy.
- Avoid using a telephone during an electrical storm. There may be a remote risk of electric shock from lightning.
- Do not use a telephone to report a gas leak in the vicinity of the leak.

**Caution:** To reduce the risk of fire, use only a No. 26 AWG or larger telecommunication line cord.

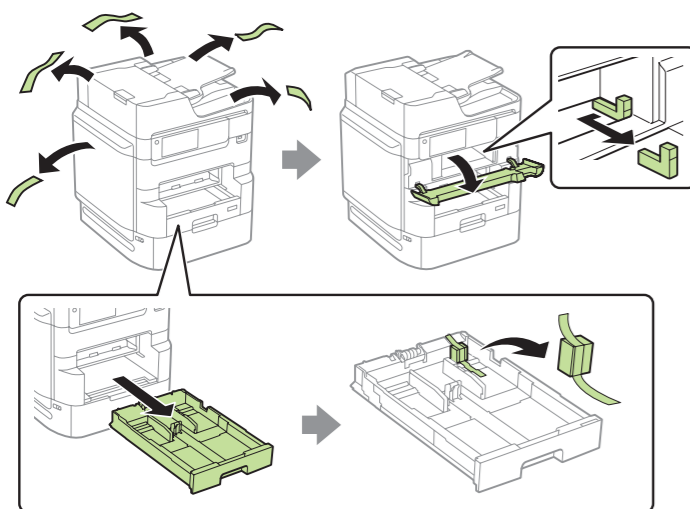
The illustrations show the WF-C879R, but the instructions apply to all models unless otherwise specified.

## 1 Unpack

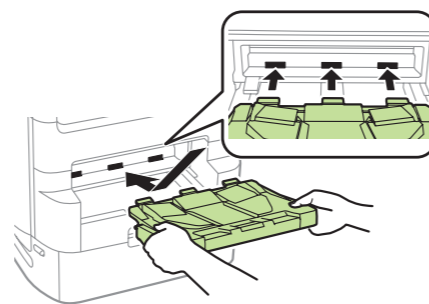


**Warning:** The product is heavy and should be lifted and moved by four people.

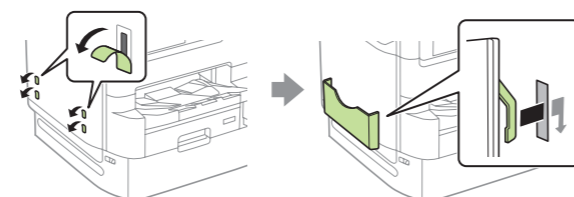
1 Remove all protective materials from the product.



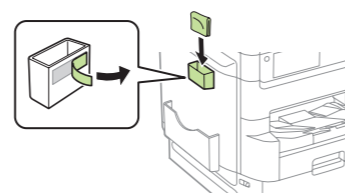
2 Insert the output tray, then lower it gently.



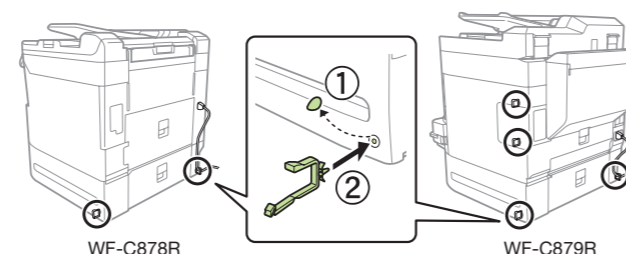
3 Remove the tape from the side of the product and attach the document holder.



4 Remove the self-adhesive tape from the cleaning cloth holder and place the holder on the side of the product.

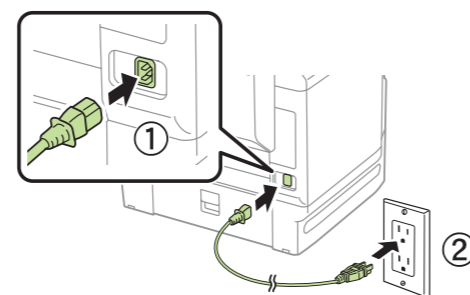


5 Remove the tape from the product and insert the cable clips.



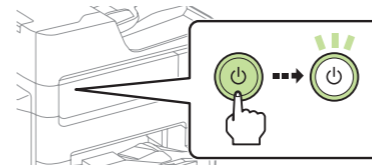
## 2 Turn on and configure

1 Connect the power cord to the back of the product and to an electrical outlet.



**Caution:** Do not connect to your computer yet.

2 Turn on the product.



3 Select your language, country, date, and time on the LCD screen.

**Note:**

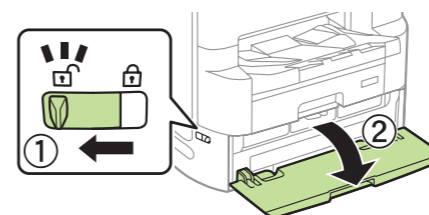
- You can change these settings later using the product's control panel. For more information, see the online *User's Guide*.
- If an error code appears, turn off the product and check that no protective material has been left inside the product.

## 3 Install ink supply units (ink packs)

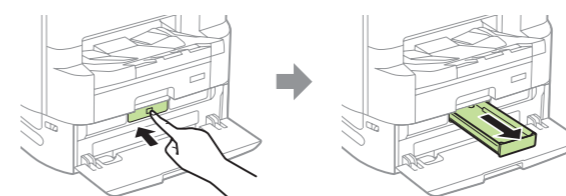
**Note:** The included initial ink packs are designed for reliable printer setup and cannot be used as replacement packs or resold. After setup, the remaining ink is available for printing.

**Caution:** Keep the ink packs out of the reach of children and do not drink the ink.

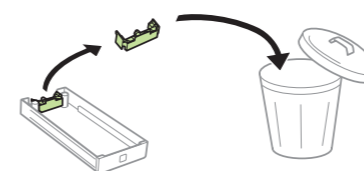
1 Unlock and open the ink pack tray cover.



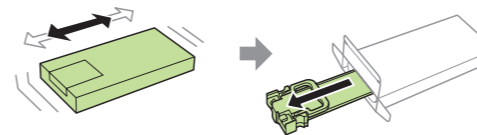
2 Press an ink pack tray to release it, then pull the tray out.



3 Remove and discard the protective piece from the ink pack tray.

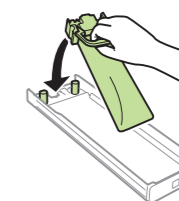


4 Shake an ink pack 10 times, then remove it from the packaging.

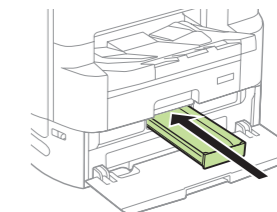


**Note:** Do not touch the green chip on the ink pack.

5 Place the ink pack in the ink pack tray. Make sure the ink pack handle fits onto the pegs and is aligned with the top of the tray.

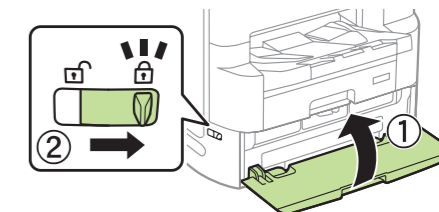


6 Insert the ink pack tray into the product. Repeat steps 2 to 6 to install the other ink packs.



**Note:** The ink packs are keyed to fit into the correct color slot. If you cannot insert the ink pack tray all the way, do not force it. Make sure the ink pack color matches the color slot on the product.

7 Close the ink pack tray cover and lock it.



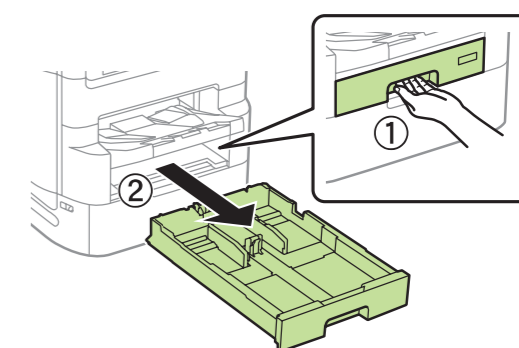
8 Select **OK** on the LCD screen to start charging the ink. Ink charging takes approximately 10 to 13 minutes, depending on your model. A message appears when ink charging is complete.

**Caution:** Don't turn off the product, raise the scanner unit, or open any covers while the product is charging or you'll waste ink.

## 4 Load paper

For instructions on loading envelopes or using the rear paper feed slot, see the online *User's Guide*.

1 Make sure the product is done charging the ink, then pull out the paper cassette.

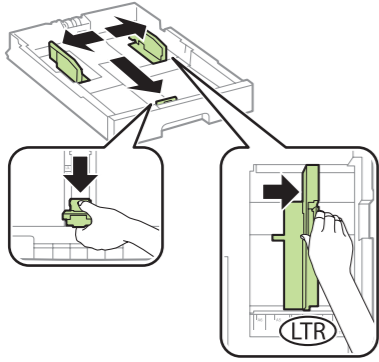


\*413888500\*

**EPSON**  
EXCEED YOUR VISION

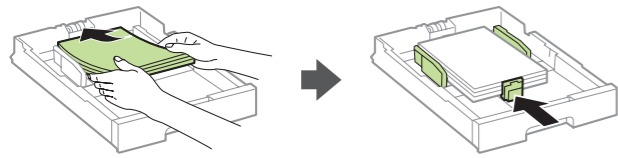


- Slide the side edge guides all the way out and set the front edge guide to the paper size you are using.

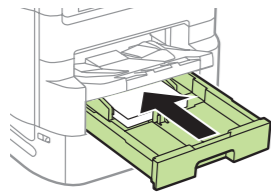


**Note:** Make sure the paper is under the arrow mark on the edge guide.

- Insert paper with the glossy or printable side down. Then slide the edge guides against the paper, but not too tightly.



- Keep the cassette flat as you insert it all the way.



- Select the paper settings on the product's control panel.

## 5 Connect the fax line

- Connect a phone cord to a telephone wall jack and to the **LINE** port on your product. See the online *User's Guide* for more information.
- If prompted, select **Proceed** on the LCD screen to set up the fax, or select **Close** to set it up later.

## 6 Install software

**Note:** An Internet connection is required to obtain the product software.

**Firmware Update Notice:** The printer is designed to work only with genuine Epson-branded ink packs. Other brands of ink packs and ink supplies are not compatible and, even if described as compatible, may not function properly or at all. Epson periodically provides firmware updates to address issues of security, performance, minor bug fixes and ensure the printer functions as designed. These updates may affect the functionality of third-party ink. Non-Epson branded or altered Epson ink packs that functioned prior to a firmware update may not continue to function.

### Standard software package

- Make sure the product is **NOT CONNECTED** to your computer.

**Windows:** If you see a Found New Hardware screen, click **Cancel** and disconnect the USB cable.

- Download and run your product's software package:

**WF-C878R**  
[www.epson.com/support/wfc878r](http://www.epson.com/support/wfc878r) (U.S.)  
[www.epson.ca/support/wfc878r](http://www.epson.ca/support/wfc878r) (Canada)

**WF-C879R**  
[www.epson.com/support/wfc879r](http://www.epson.com/support/wfc879r) (U.S.)  
[www.epson.ca/support/wfc879r](http://www.epson.ca/support/wfc879r) (Canada)

- Follow the instructions on the computer screen to run the setup program.

- When you see the Select Your Connection screen, select one of the following and follow the on-screen instructions:

- Wireless connection**  
In most cases, the software installer automatically attempts to set up your wireless connection. If setup is unsuccessful, you may need to enter your network name (SSID) and password.
- Direct USB connection**  
Make sure you have a USB cable (not included).
- Wired network connection**  
Make sure you have an Ethernet cable (not included).

### PCL or PostScript driver

Download the software and see your online *User's Guide* for instructions.

**WF-C878R**  
[www.epson.com/support/wfc878r](http://www.epson.com/support/wfc878r) (U.S.)  
[www.epson.ca/support/wfc878r](http://www.epson.ca/support/wfc878r) (Canada)

**WF-C879R**  
[www.epson.com/support/wfc879r](http://www.epson.com/support/wfc879r) (U.S.)  
[www.epson.ca/support/wfc879r](http://www.epson.ca/support/wfc879r) (Canada)

## Mobile printing

- Print directly from your Android™ (v4.4 or later) device\*. Simply connect your printer and device to the same network and tap the menu icon to select the print option.
- Print from wherever you are, next to your printer or remotely, with Epson Connect™. Learn more at [www.epson.com/connect](http://www.epson.com/connect) (U.S.) or [www.epson.ca/connect](http://www.epson.ca/connect) (Canada).
- Use voice-activated assistants to print a variety of creative and everyday items from your Epson product. Simply add your product to an Epson Connect account, then link the account to a voice-activated assistant. See [www.epson.com/voice](http://www.epson.com/voice) (U.S.) or [www.epson.ca/voice](http://www.epson.ca/voice) (Canada) for more information.

\* May require the Epson Print Enabler or Mopria Print Service app from Google Play™.

## Any problems?


### Network setup was unsuccessful.

- Print a network connection report to identify network problems and solutions. See your online *User's Guide* for instructions.
- Make sure you select the right network name (SSID).
- Restart your router (turn it off and then on), then try to connect to it again.
- If you see a firewall alert message, click **Unblock** or **Allow** to let setup continue.
- If your network has security enabled, make sure you enter your network password (WEP key or WPA passphrase) correctly. Be sure to enter your password in the correct case.

### There are lines or incorrect colors in my printouts.

Run a nozzle check to see if there are any gaps in the printout. Then clean the print head, if necessary. See the online *User's Guide* for more information.

### The product's screen is dark.

Make sure your product is turned on, and touch the screen or press the  power button to wake your product from sleep mode.

### Setup is unable to find my printer after connecting it with a USB cable.

Make sure your product is turned on and securely connected.

## Any questions?

### User's Guide

**Windows:** Click the icon on your desktop or Apps screen to access the online *User's Guide*.

**Mac:** Click the icon in Applications/Epson Software/Guide to access the online *User's Guide*.

If you don't have a User's Guide icon, go to the Epson website, as described below.

### Support

Visit [www.epson.com/support](http://www.epson.com/support) (U.S.) or [www.epson.ca/support](http://www.epson.ca/support) (Canada) and search for your product to download drivers, view manuals, get FAQs, or contact Epson.

Call (866) 212-8743, 6 AM to 6 PM, Pacific Time, Monday through Friday. Days and hours of support are subject to change without notice. Toll or long distance charges may apply.

### Recycling

Epson offers a recycling program for end of life hardware and ink packs. Please go to [www.epson.com/recycle](http://www.epson.com/recycle) (U.S.) or [www.epson.ca/recycle](http://www.epson.ca/recycle) (Canada) for information on how to return your products for proper disposal.

## Need paper and ink?

Ensure brilliant results with Epson specialty and plain papers, engineered specifically for Epson printers. Find specialty papers and Epson Genuine Ink at [www.epson.com](http://www.epson.com) (U.S. sales) or [www.epson.ca](http://www.epson.ca) (Canadian sales) and at Epson authorized resellers. Call 800-GO-EPSON (800-463-7766).



### WF-C878R/WF-C879R replacement ink packs

Color	High-capacity	Extra High-capacity
Black	T05A	T05B
Cyan	T05A	T05B
Magenta	T05A	T05B
Yellow	T05A	T05B



EPSON and DURABrite are registered trademarks, EPSON Exceed Your Vision is a registered logomark, and Epson Connect is a trademark of Seiko Epson Corporation.

Windows is a registered trademark of Microsoft Corporation in the United States and/or other countries.

Mac is a trademark of Apple Inc., registered in the U.S. and other countries.

Android and Google Play are trademarks of Google LLC.

General Notice: Other product names used herein are for identification purposes only and may be trademarks of their respective owners. Epson disclaims any and all rights in those marks.

This information is subject to change without notice.

© 2019 Epson America, Inc., 10/19  
 Printed in XXXXX

CPD-58239