



LIFX

LIFX.COM

MEET YOUR NEW LIFX®

LIFX is color changing, Wi-Fi lighting that you control with your smartphone or tablet.

With the LIFX app you can switch your lights on and off, dim, adjust brightness and color, set different scenes and set wake up and sleep timers. You can control individual lights, rooms, or the entire house.

Even if you don't have your smartphone with you, LIFX still functions like a normal light by switching on and off with a regular light switch.

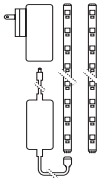
ALL YOU NEED TO BEGIN IS...

- A device running iOS 9.0+ or Android 4.1+
- A Wi-Fi Internet connection. Wi-Fi access point must be 802.11b, g or n compliant with WPA2 security and a DHCP-configured connection available for every connected LIFX® light.
- The LIFX app from your app store or at go.lifx.co



Simply complete the installation and setup steps on the next pages then follow the app prompts to enjoy your new lights!

LIFX Z



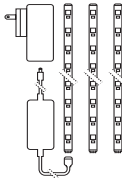
2 strips, 2m / 6.6'

LIFX Z EXTENSION



1 strip, 1m / 3.3'

LIFX Z EXPERIENCE

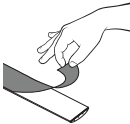


3 strips, 3m / 9.9'

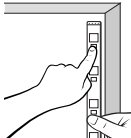
INSTALL



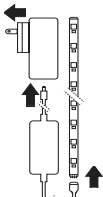
CLEAN



PEEL



STICK



CONNECT

SETUP

go.lifx.co

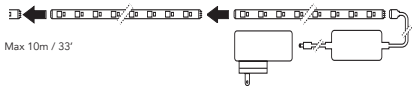


GET APP

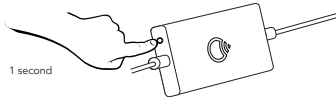


SWITCH ON

EXTEND

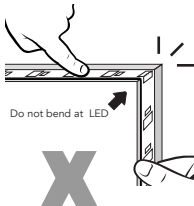
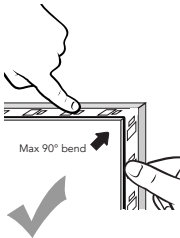


Max 10m / 33'



1 second

CARE



REGULATORY & COMPLIANCE INFORMATION

Specifications

To see a full list of LIFX® product specifications applicable to this Product, go to www.lifx.com/compliance

Certification

LIFX® adheres to the certification requirements for various regions around the world.

To see a full list of LIFX® certifications please go to www.lifx.com/compliance to ensure LIFX® complies with the certification requirements in your region.

FCC Compliance Statement U.S

This equipment has been tested and found to comply with the limits for a Class B digital device, under Part 15 of the FCC Rules. These limits provide reasonable protection against harmful interference in a residential installation. This equipment generates, uses and can radiate radio frequency energy and, if not installed and used under the instructions, may interfere with radio or television reception, which can be determined by turning the equipment off and on. The user is encouraged

to correct the interference by one or more of the following measures:

- Reorient or relocate the receiving antenna
- Increase the separation between the equipment and the receiver
- Connect the equipment into an outlet on a circuit different from that to which the receiver is connected
- Consult the dealer or an experienced radio/TV technician for help

Changes or modifications not approved by LIFX can void the user's authority to operate the equipment.

This device complies with Part 15 of the FCC Rules. Operation is subject to the following two conditions: (1) This device may not cause harmful interference, and (2) this device must accept any interference received, including interference that may cause undesired operation. Contains FCC ID: 2AA53-LIFX03

EU Declaration of Conformity and Industry Canada Compliance.

LIFX complies with all applicable EU Directives and Industry Canada Standards. This Class B RFLD complies with the Canadian standard ICES-005. Contains IC: 11475A-LIFX03. See www.lifx.com/compliance

CHANGES & MODIFICATION

Changes or modifications made to this device may void certification of the device. Changes or modifications made to this unit not expressly approved by the party responsible for compliance could void the user's authority to operate the equipment.

RECOMMENDED INSTALLATION REQUIREMENTS

This device should only be installed in light fittings and fixtures that are designed to accept each fitting. Lamps, fittings and fixtures that are designed to accept smaller or lower wattage light bulbs may result in the LIFX® bulb operating below its optimal capacity. For optimal performance it is recommended that LIFX® bulbs be fitted into fixtures that provide sufficient air flow through and around the bulb. It is recommended that the LIFX® bulb be installed away from other devices designed to receive or transmit radio signals. It is recommended LIFX® bulb/s be installed and operated at a minimum distance of 30 cm from the body. For lamps with a weight significantly higher than that of lamps for which they are a replacement, attention should be drawn to the fact that the increased weight may reduce the mechanical stability of certain luminaires and may impair contact making and lamp retention.

INTERFERENCE

LIFX® has been designed to minimise interference with other radio, broadcast or receiving devices. The manufacturer is not responsible for any interference caused as a result of modifications to the product or by failure to adhere to the recommendations in this document and at support.lifx.com. This device generates radio frequency energy and, if not installed in accordance with the “recommended installation requirements” may cause harmful interference to radio communication devices. If the device is causing radio interference it is recommended that the user try:

- a) relocating the device to a different place;
- b) adjust the antenna on the receiving device;
- c) consult a technician experienced in radio interference.

NOTICES

- This device is not intended for use with emergency exits
- Use in open luminaire only
- Added weight of the device may cause instability of a free-standing portable luminaire

- Use in dry and damp locations only
- Suitable for operation in ambient temperature not exceeding 40°C

LIFX® is not designed for use in:

- Excessively hot environments (e.g. close to ovens, radiators, heaters, etc.)
- Regions or countries other than that in which the product was intended for
- Outdoor and wet areas, except where the LIFX® Product specifies that it is for both Indoor and Outdoor use

WHEN USING LIFX®

- Switch off the power supply to the device and allow sufficient time for it to cool before handling it
- Do not open device, as this will void the warranty
- Do not clean the device when it is powered on and or connected to the wall socket
- If cleaning the product, use a soft dry cloth, do not use cleaning agents

LIMITED WARRANTY

GENERAL

Lifi Labs Inc. ("LIFX®") warrants the LIFX® bulb (the "Product"), and only the Product, against defects in materials and workmanship under normal use ("Defect") for a period of TWO YEARS (730 days) from the date of retail purchase by the original purchaser ("Warranty Period"). Under this Limited Warranty, if a defect arises and a valid claim is received by LIFX® within the Warranty Period, at its option and to the extent permitted by law, LIFX® will either: 1. repair the Product at no charge, using new or refurbished replacement parts --or-- 2. exchange the Product with a new or refurbished Product.

In the event of a defect, to the extent permitted by law, these are your sole and exclusive remedies. A replacement Product or part assumes the remaining warranty of the original Product or ninety (90) days from the date of replacement or repair, whichever is longer. When a Product or part of the Product is exchanged, any replacement item becomes your property and the replaced item becomes LIFX®'s property. Parts provided by LIFX® in fulfillment of its warranty obligation must be used in Products for which warranty service is claimed.

EXCLUSIONS & LIMITATIONS

This Limited Warranty applies only to the Product manufactured by or for LIFX® that can be identified by the “LIFX® trademark, trade name, or logo affixed to it. The Limited Warranty does not apply to any (a) LIFX® products and services other than the Product, (b) non- LIFX® hardware product, (c) consumables (such as batteries), or (d) software, even if packaged or sold with the Product or embedded in the Product. Refer to the licenses accompanying the software for details of your rights with respect to its use. LIFX® does not warrant that the operation of the Product will meet your needs or requirements or be uninterrupted or error free. LIFX® is not responsible for damage arising from failure to follow instructions relating to the Product’s use or from failures resulting from inadequate electrical supply or internet access. This warranty does not apply to a Product or part of the Product that has been altered or modified (e.g. to alter functionality or capability) by anyone who is not a representative of LIFX® or if the Product is inserted or installed in a casing not provided by LIFX®. In addition, this Limited Warranty does not apply to Defects or damage caused by (a) use with non-LIFX® products; (b) accident, abuse, misuse, flood, fire, earthquake or other external causes or abnormal conditions; (c) operating the product outside the permitted or intended uses or conditions described by LIFX® or with improper voltage or power supply; or (d) service (including upgrades and expansions) performed by anyone who is not a representative of LIFX®. Recovery and

reinstallation of software programs and user data are not covered under this Limited Warranty. This Limited Warranty does not cover the cost of returning the Product to LIFX®; this is your responsibility. No LIFX® reseller, agent, or employee is authorized to make any modification, extension,

or addition to this Limited Warranty. If any term is held to be illegal or unenforceable, the legality or enforceability of the remaining terms shall not be affected or impaired.

EXCLUSIVE WARRANTIES

THE WARRANTIES SET FORTH HEREIN ARE THE EXCLUSIVE WARRANTIES PROVIDED BY LIFX®, AND EXCEPT TO THE EXTENT PROHIBITED BY APPLICABLE LAW, ALL OTHER WARRANTIES, WHETHER EXPRESS OR IMPLIED WARRANTIES (INCLUDING WARRANTIES OF MERCHANTABILITY, FITNESS FOR A PARTICULAR PURPOSE AND NON INFRINGEMENT) ARE HEREBY EXCLUDED.

LIMITATION OF DAMAGES

EXCEPT TO THE EXTENT PROHIBITED BY APPLICABLE LAW, LIFX® SHALL NOT BE LIABLE FOR ANY INCIDENTAL, INDIRECT, SPECIAL, OR CONSEQUENTIAL DAMAGES RESULTING FROM ANY USE OF THE PRODUCT OR BREACH OF EXPRESS OR IMPLIED WARRANTY OR CONDITION, OR UNDER ANY OTHER LEGAL THEORY. LIFX®'S LIABILITY FOR DAMAGES RESULTING FROM ANY USE OF THE PRODUCT OR BREACH OF EXPRESS OR IMPLIED WARRANTY OR CONDITION, OR UNDER ANY OTHER LEGAL THEORY WILL BE LIMITED TO THE ORIGINAL COST PAID FOR OF THE DEFECTIVE PRODUCT.

CONSUMER PROTECTION

Some states do not allow the exclusion or limitation of incidental or consequential damages, or allow limitations on how long an implied warranty lasts, so the above limitations or exclusions may not apply to you. This warranty gives you specific legal rights, and you may also have other rights that vary by state to state.

GOVERNING LAW AND ARBITRATION

This Limited Warranty shall be governed by the laws of the State of California without giving effect to any conflict of laws principles that may provide the application of the law of another jurisdiction and without regard to the Convention on Contracts for the International Sale of Goods. Any claim or dispute in connection with this Limited Warranty shall be resolved in a cost effective manner through binding non appearance based arbitration. The arbitration shall be initiated through an established alternative dispute resolution provider mutually agreed upon by the parties. The alternative dispute resolution provider and the parties must comply with the following rules: a) the arbitration shall be conducted by telephone, online and/or be solely based on written submissions, the specific manner shall be chosen by the party initiating the arbitration; b) the arbitration shall not involve any personal appearance by the parties or witnesses unless otherwise mutually agreed by the parties; and c) any judgement on the award rendered by the arbitrator may be entered in any court of competent jurisdiction. If the foregoing arbitration clause does not apply for any reason, you agree to submit to the personal jurisdiction of the state courts located within San Francisco County, California and the federal courts in the Northern District of California for the purpose of litigating all such claims or disputes, which courts shall have exclusive jurisdiction of such claims or disputes. Notwithstanding the foregoing, LIFX® may seek injunctive or other equitable relief to protect its intellectual property rights in any court of competent jurisdiction.



EQUIPMENT

This symbol on the product indicates that this product shall not be treated as household waste. Instead it shall be sent to the applicable collection point for the recycling of electronic equipment. By ensuring this product is disposed of correctly, you will help prevent potential negative consequences for the environment and human health. For more information about the recycling of this product, please contact your local city office.



© 2016 LIFX (LIFI LABS INC.)
All rights reserved.



RoHS



LIFI LABS INC. is the exclusive owner of rights and interests in and to the mark LIFX, the LIFX logo and The light bulb reinvented.

Covered by patents: www.lifx.com/patents

L I F X Z