

MAG Infinite Series
Personal Computer

Infinite B915

Contents

Copyright and Trademarks Notice	iii
Revision	iii
Upgrade and Warranty	iv
Acquisition of Replaceable Parts	iv
Technical Support	iv
Chemical Substances Information	v
Battery Information	v
Safety Instructions	vi
CE Conformity	viii
FCC-B Radio Frequency Interference Statement	viii
WEEE Statement	ix
RoHS Statement	ix
1. Overview	1-1
Packing Contents	1-2
System Overview	1-3
2. Getting Started	2-1
Safety & Comfort Tips	2-2
Hardware Setup	2-3
3. System Operations	3-1
Power Management	3-2
Network Connection (Windows 10)	3-4
System Recovery (Windows 10)	3-7
System Recovery (F3 Hotkey Recovery)	3-11

Copyright and Trademarks Notice

Copyright © Micro-Star Int'l Co., Ltd. All rights reserved. The MSI logo used is a registered trademark of Micro-Star Int'l Co., Ltd. All other marks and names mentioned may be trademarks of their respective owners. No warranty as to accuracy or completeness is expressed or implied. MSI reserves the right to make changes to this document without prior notice.

Revision

Revision	Date
V1.2	2020/05

Upgrade and Warranty

Please note that certain components preinstalled in the computer may be upgradable or replaceable by user's request. To learn more about upgrade limitation, please refer to the specifications in the User's Manual. For any further information about the computer users purchased, please contact the local dealer. Do not attempt to upgrade or replace any component of the computer if you are not an authorized dealer or service center, since it may cause the warranty void. It is strongly recommended that you contact the authorized dealer or service center for any upgrade or replace service.

Acquisition of Replaceable Parts

Please be noticed that the acquisition of replaceable parts (or compatible ones) of the computer users purchased in certain countries or territories may be fulfilled by the manufacturer within 5 years at most since the computer has been discontinued, depending on the official regulations declared at the time. Please contact the manufacturer via <https://www.msi.com/support/> for the detailed information about the acquisition of spare parts.

Technical Support

If a problem arises with your computer and no solution can be obtained from the user's manual, please contact your place of purchase or local distributor. Alternatively, please try the following help resources for further guidance. Visit the MSI website for technical guide, BIOS updates, driver updates and other information via <https://www.msi.com/support/>

Chemical Substances Information

In compliance with chemical substances regulations, such as the EU REACH Regulation (Regulation EC No. 1907/2006 of the European Parliament and the Council), MSI provides the information of chemical substances in computers at:

https://www.msi.com/html/popup/csr/evmtprrt_pcm.html

Battery Information



European Union:

Batteries, battery packs, and accumulators should not be disposed of as unsorted household waste. Please use the public collection computer to return, recycle, or treat them in compliance with the local regulations.



廢電池請回收

Taiwan:

For better environmental protection, waste batteries should be collected separately for recycling or special disposal.

California, USA:

The button cell battery may contain perchlorate material and requires special handling when recycled or disposed of in California.

For further information please visit:

<https://dtsc.ca.gov/perchlorate/>

Safety Instructions



- Read the safety instructions carefully and thoroughly.
- All cautions and warnings on the computer or user's manual should be noted.



- Make sure that the power voltage is within its safety range and has been adjusted properly to the value of 100~240V before connecting the computer to the power outlet.
- If the power cord comes with a 3-pin plug, do not disable the protective earth pin from the plug. The computer must be connected to an earthed mains socket-outlet.
- Always unplug the AC power cord before installing any add-on card or module to the computer.
- Always disconnect the AC power cord or switch the wall socket off if the computer would be left unused for a certain time to achieve zero energy consumption.
- Place the power cord in a way that people are unlikely to step on it. Do not place anything on the power cord.
- If this computer comes with an adapter, use only the MSI provided AC adapter approved for use with this computer.
- Power Rating
 - » 350W: 100-240V~50-60Hz, 6-3A(Option1)
 - » 350W: 100-240V~47-63Hz, 6-3A(Option2)
 - » 500W: 100-240V~50-60Hz, 7-3A(Option3)

Please take special precautions if this computer comes with a battery.



- Danger of explosion if battery is incorrectly replaced. Replace only with the same or equivalent type recommended by the manufacturer.
- Avoid disposal of a battery into fire or a hot oven, or mechanically crushing or cutting of a battery, which can result in an explosion.
- Avoid leaving a battery in an extremely high temperature or extremely low air pressure environment that can result in an explosion or the leakage of flammable liquid or gas.
- Do not ingest battery. If the coin/button cell battery is swallowed, it can cause severe internal burns and can lead to death. Keep new and used batteries away from children.



- To reduce the possibility of heat-related injuries or of overheating the computer, do not place the computer on a soft, unsteady surface or obstruct the computer air ventilators.
- Use this computer only on a hard, flat and steady surface.



- ☐ Keep this computer away from humidity and high temperature.
- ☐ Do not leave the computer in an unconditioned environment with a storage temperature above 60°C or below 0°C, which may damage the computer.
- ☐ The maximum operating temperature is around 35°C.



Never pour any liquid into the opening that could damage or cause electrical shock.



Always keep the strong magnetic or electrical objects away from the computer.



If any of the following situations arises, get the computer checked by service personnel:

- ☐ The power cord or plug is damaged.
- ☐ Liquid has penetrated into the computer.
- ☐ The computer has been exposed to moisture.
- ☐ The computer does not work well or you can not get it work according to user's manual.
- ☐ The computer has dropped and damaged.
- ☐ The computer has obvious sign of breakage.

Green Product Features

- ☐ Reduced energy consumption during use and stand-by
- ☐ Limited use of substances harmful to the environment and health
- ☐ Easily dismantled and recycled
- ☐ Reduced use of natural resources by encouraging recycling
- ☐ Extended product lifetime through easy upgrades
- ☐ Reduced solid waste production through take-back policy



Environmental Policy

- ☐ The product has been designed to enable proper reuse of parts and recycling and should not be thrown away at its end of life.
- ☐ Users should contact the local authorized point of collection for recycling and disposing of their end-of-life products.
- ☐ Visit the MSI website and locate a nearby distributor for further recycling information.
- ☐ Users may also reach us at gpcontdev@msi.com for information regarding proper disposal, take-back, recycling, and disassembly of MSI products.

CE Conformity

Hereby, Micro-Star International CO., LTD declares that this computer is in compliance with the essential safety requirements and other relevant provisions set out in the European Directive.



FCC-B Radio Frequency Interference Statement

This computer has been tested and found to comply with the limits for a Class B digital device, pursuant to Part 15 of the FCC Rules. These limits are designed to provide reasonable protection against harmful interference in a residential installation. This computer generates, uses and can radiate radio frequency energy and, if not installed and used in accordance with the instruction manual, may cause harmful interference to radio communications. However, there is no guarantee that interference will not occur in a particular installation. If this computer does cause harmful interference to radio or television reception, which can be determined by turning the computer off and on, the user is encouraged to try to correct the interference by one or more of the measures listed below:



- Reorient or relocate the receiving antenna.
- Increase the separation between the computer and receiver.
- Connect the computer into an outlet on a circuit different from that to which the receiver is connected.
- Consult the dealer or an experienced radio/television technician for help.

Notice 1

The changes or modifications not expressly approved by the party responsible for compliance could void the user's authority to operate the computer.

Notice 2

Shielded interface cables and AC power cord, if any, must be used in order to comply with the emission limits.

This device complies with Part 15 of the FCC Rules. Operation is subject to the following two conditions:

1. this device may not cause harmful interference, and
2. this device must accept any interference received, including interference that may cause undesired operation.

MSI Computer Corp.
901 Canada Court, City of Industry, CA 91748, USA
(626) 913-0828
www.msi.com

WEEE Statement

Under the European Union ("EU") Directive on Waste Electrical and Electronic Computer, Directive 2012/19/EU, computers of "electrical and electronic computer" cannot be discarded as municipal waste anymore and manufacturers of covered electronic computer will be obligated to take back such computers at the end of their useful life.



RoHS Statement

Japan JIS C 0950 Material Declaration

A Japanese regulatory requirement, defined by specification JIS C 0950, mandates that manufacturers provide material declarations for certain categories of electronic computers offered for sale after July 1, 2006.

https://www.msi.com/html/popup/csr/cemm_jp.html

https://tw.msi.com/html/popup/csr_tw/cemm_jp.html

India RoHS

This computer complies with the "India E-waste (Management and Handling) Rule 2011" and prohibits use of lead, mercury, hexavalent chromium, polybrominated biphenyls or polybrominated diphenyl ethers in concentrations exceeding 0.1 weight % and 0.01 weight % for cadmium, except for the exemptions set in Schedule 2 of the Rule.

Turkey EEE regulation

Conforms to the EEE Regulations of the Republic Of Turkey

Ukraine restriction of hazardous substances

The computer complies with requirements of the Technical Regulation, approved by the Resolution of Cabinet of Ministry of Ukraine as of December 3, 2008 № 1057, in terms of restrictions for the use of certain dangerous substances in electrical and electronic computer.

Vietnam RoHS

As from December 1, 2012, all computers manufactured by MSI comply with Circular 30/2011/TT-BCT temporarily regulating the permitted limits for a number of hazardous substances in electronic and electric computers.

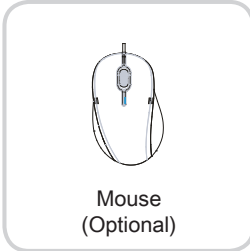
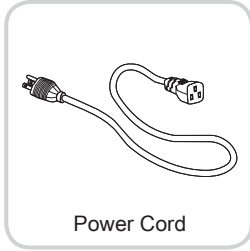
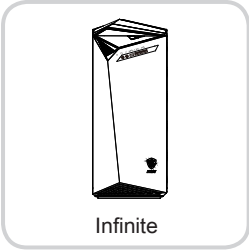


1

Overview

Congratulations for purchasing the Infinite Series Personal Computer System. This system is your best PC choice. With the fantastic appearance, it can easily be set anywhere. The feature packed platform also gives you an exciting PC experience.

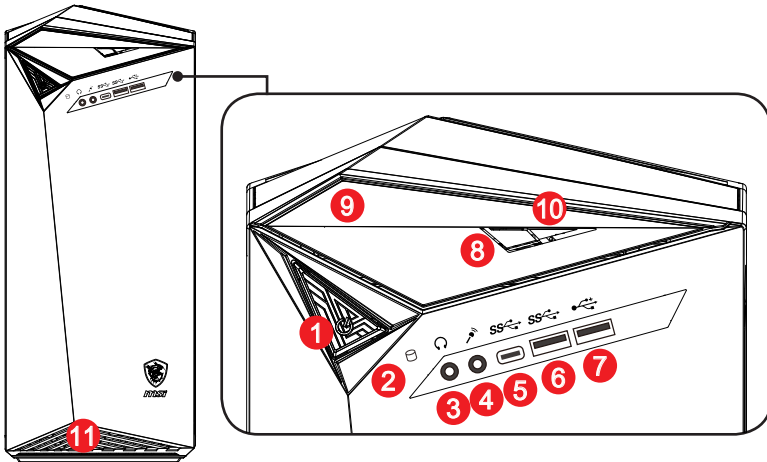
Packing Contents



* Please contact us immediately if any of the items is damaged or missing.
* The illustrations are for reference only and your packing contents may slightly vary depending on the model you purchased.

System Overview

► Front View



- 1** **Power Button**
Press the power button to turn the system on and off.
- 2** **Hard Disk Drive LED**
This indicator shows the activity status of the HDD. It flashes when the system is accessing data on the HDD and remains off when no disk activity is detected.
- 3** **Headphone Jack**
This connector is provided for headphones or speakers.
- 4** **Microphone Jack**
This connector is provided for microphones.
- 5** **USB 3.2 Gen 1 Port (Type-C)**
USB 3.2 Gen 1, the SuperSpeed USB, delivers up to 5Gbps high-speed data transfer for various devices, such as storage devices, hard drives, video cameras, etc. The slim and sleek USB Type-C connector features reversible plug orientation.

6 USB 3.2 Gen 1 Port

USB 3.2 Gen 1, the SuperSpeed USB, delivers up to 5Gbps high-speed data transfer for various devices, such as storage devices, hard drives, video cameras, etc.

7 USB 2.0 Port

The USB (Universal Serial Bus) port is for attaching USB devices such as keyboard, mouse, or other USB-compatible devices. It supports up to 480Mbit/s (Hi-Speed) data transfer rate.

8 ODD Eject Button (Optional)

Press the button to open the optical disk drive.

9 Optical Disk Drive (Optional)

A DVD Super-Multi drive is integrated for your home entertainment (Blu-ray is optional).

10 Eject Hole (Optional)

Insert a thin, straight object (such as a paper clip) into the eject hole to open the optical disk drive manually if the eject button does not work.

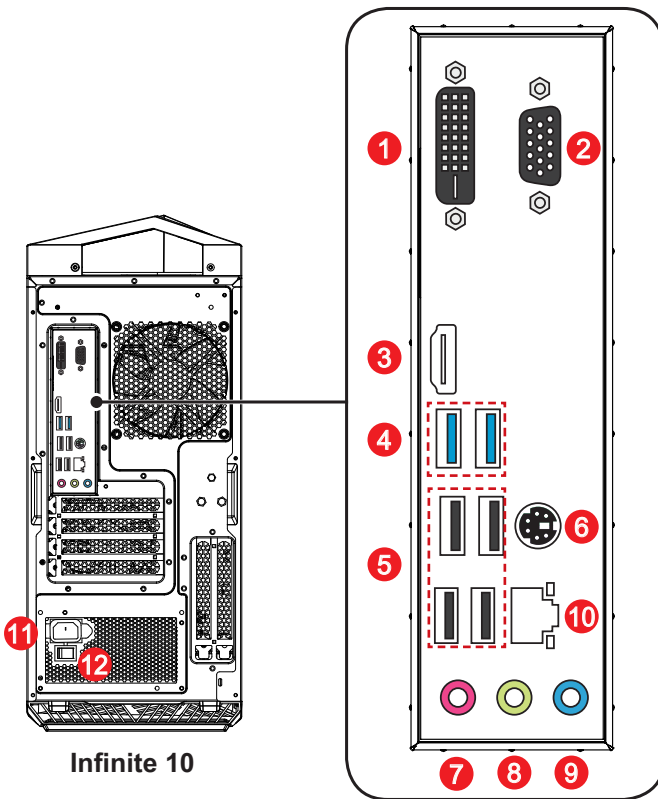
11 Ventilator

The ventilator on the enclosure is used for air convection and to prevent the equipment from overheating. Do not cover the ventilator.

Important

High-speed devices are recommended for USB 3.2 ports whereas low-speed devices, such as mouse or keyboard, are suggested to be plugged into the USB 2.0 ports.

► Rear View



Infinite 10

1

DVI-D Port (Optional)

The DVI-D (Digital Visual Interface-Digital) connector allows you to connect a LCD monitor. It provides a high-speed digital interconnection between the computer and its display device. To connect an LCD monitor, simply plug your monitor cable into the DVI-D connector, and make sure that the other end of the cable is properly connected to your monitor (refer to your monitor manual for more information.)

2

VGA Port (Optional)

The DB15-pin female port is provided for monitor.

3

HDMI-Out Port 
HIGH-DEFINITION MULTIMEDIA INTERFACE

The High-Definition Multimedia Interface (HDMI) is an all-digital audio/video interface capable of transmitting uncompressed streams. HDMI supports all TV format, including standard, enhanced, or high-definition video, plus multi-channel digital audio on a single cable.

4

USB 3.2 Gen 1 Port

USB 3.2 Gen 1, the SuperSpeed USB, delivers up to 5Gbps high-speed data transfer for various devices, such as storage devices, hard drives, video cameras, etc.

5

USB 2.0 Port

The USB (Universal Serial Bus) port is for attaching USB devices such as keyboard, mouse, or other USB-compatible devices. It supports up to 480Mbit/s (Hi-Speed) data transfer rate.

6

PS/2® Keyboard/ Mouse Combo Port

The PS/2® keyboard/ mouse DIN connector for PS/2® keyboard/ mouse.

7

Mic-In

This connector is provided for microphones.

8

Line-Out

This connector is provided for headphones or speakers.

9

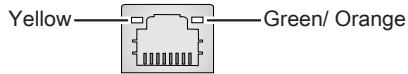
Line-In

This connector is provided for external audio output devices.

10

LAN Jack

The standard RJ-45 LAN jack is provided for connection to the Local Area Network (LAN). You can connect a network cable to it.



LED	Color	LED State	Condition
Left	Yellow	Off	LAN link is not established.
		On (steady state)	LAN link is established.
		On (blinking)	The computer is communicating with another computer on the LAN.
Right	Green	Off	10 Mbit/sec data rate is selected.
	Orange	On	100 Mbit/sec data rate is selected.
		On	1000 Mbit/sec data rate is selected.

11

Power Jack

Power supplied through this jack supplies power to your system.

12

Power Supply Switch

Switch this switch to - can turn on the power supply. Switch it to 0 to cut off the power circulation.

2

Getting Started

Safety & Comfort Tips

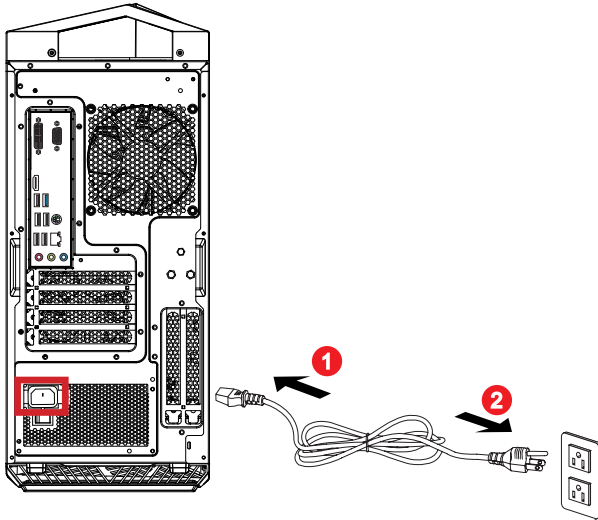
Choosing a good workspace is important if you have to work with your PC for a long period of time.

1. Your work area should have enough illumination.
2. Choose the proper desk and chair and adjust their height to fit your posture when operating.
3. When sitting on the chair, sit straight and keep a good posture. Adjust the chair's back (if available) to support your back comfortably.
4. Place your feet flat and naturally on the floor, so that your knees and elbows have the proper position (about 90-degree) when operating.
5. Put your hands on the desk naturally to support your wrists.
6. Avoid using your PC in a place where discomfort may occur (such as on the bed).
7. The Personal Computer System is an electrical device. Please treat it with great care to avoid personal injury.

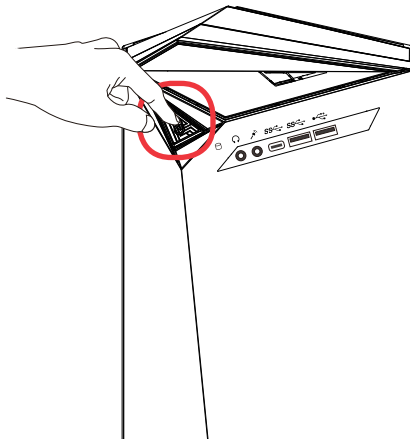
Hardware Setup

► Connecting the AC Power and Powering On

1. Connect the power cord to the system and electrical outlet.



2. Press the power button to power on the system.



Important

When unplugging the AC power cord, always hold the connector part of the cord. Never pull the cord directly.

Blank sheet of lined paper with horizontal ruling lines and double lines at the top and bottom margins.

3

System Operations

This chapter provides you with essential information on system operations.

Important


All information is subject to change without prior notice.

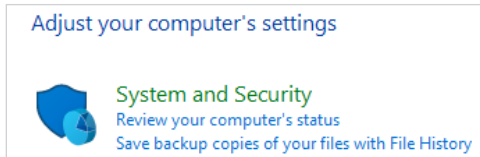
Power Management

Power management of personal computers (PCs) and monitors has the potential to save significant amounts of electricity as well as deliver environmental benefits.

To be energy efficient, turn off your display or set your PC to sleep mode after a period of user inactivity.

► Power Management in Windows 10

- [Power Options] in Windows OS allow you to control the power management features of your display, hard drive, and battery. Right-click [Start] , select [Control Panel] from the list and then click [System and Security].



Select [Power Options] and choose a power plan that suits your personal needs. You may also fine-tune the settings by clicking [Change plan settings].

- The Shut Down Computer menu presents the options of Sleep (S3/S4) & Shut Down (S5) for rapid and easy management of your system power.

► Power Management through ENERGY STAR qualified monitors

The power management feature allows the computer to initiate a low-power or "Sleep" mode after a period of user inactivity. When used with an external ENERGY STAR qualified monitor, this feature also supports similar power management features of the monitor. To take advantage of these potential energy savings, the power management feature has been preset to behave in the following ways when the system is operating on AC power:

- Turn off the display after 10 minutes
- Initiate Sleep after 30 minutes



ENERGY STAR

► Waking the System Up

The computer shall be able to wake up from power saving mode in response to a command from any of the following:

- the power button,
- the network (Wake On LAN),
- the mouse,
- the keyboard.




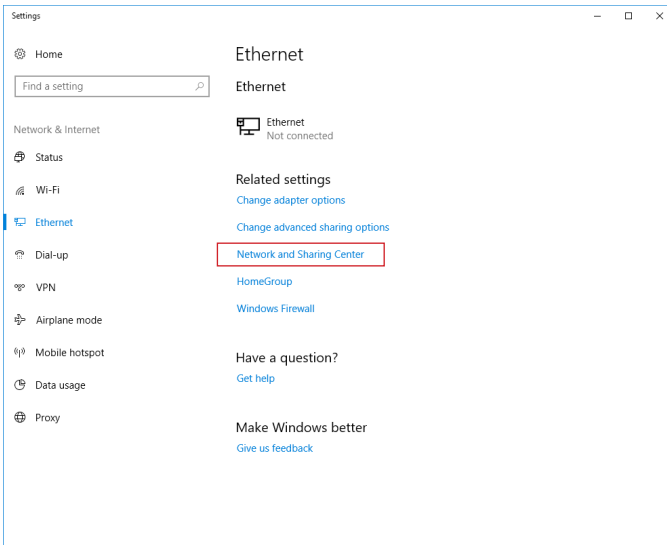
Energy Saving Tips:

- Turn off the monitor by pressing the monitor power button after a period of user inactivity.
- Tune the settings in Power Options under Windows OS to optimize your PC's power management.
- Install power saving software to manage your PC's energy consumption.
- Always disconnect the AC power cord or switch the wall socket off if your PC would be left unused for a certain time to achieve zero energy consumption.

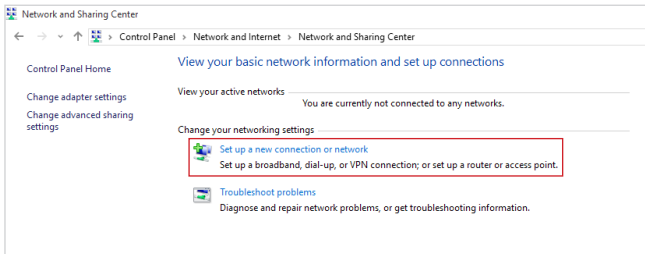
Network Connection (Windows 10)

► Wired Network

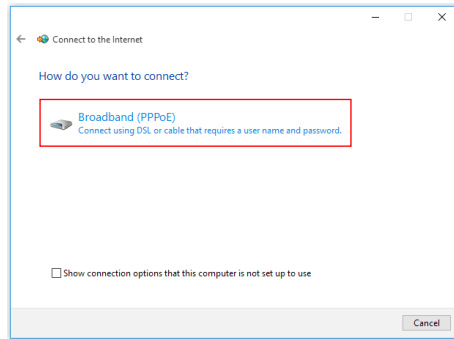
1. Right-click [Start]  and select [Network Connections] from the list.
2. Select [Ethernet] and then [Network and Sharing Center].



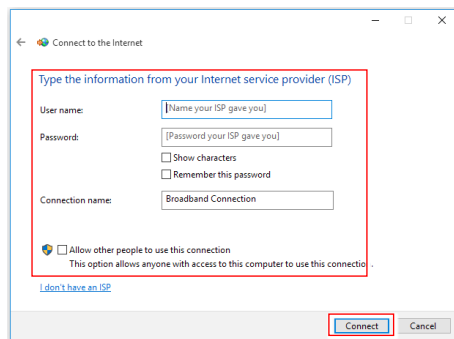
3. Select [Set up a new connection or network].




4. Choose [Connect to the Internet] and click [Next].
5. Select [Broadband (PPPoE)] to connect using DSL or cable that requires a user name and password.

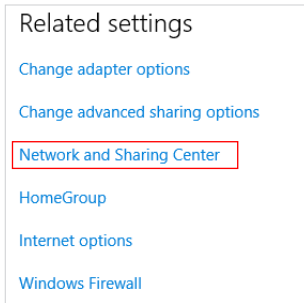


6. Type the information from your Internet Service Provider (ISP) and click [Connect] to establish your LAN connection.



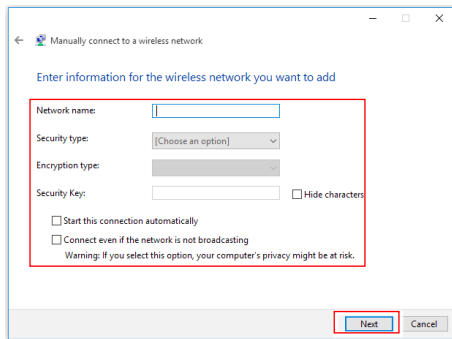
► Wireless Network

1. Go to [Start] , click [Settings] and select [Network and Internet].
2. A list of available WLAN connections pops up. Choose a connection from the list.
3. To establish a new connection, select [Network and Sharing Center].



3-6

4. Select [Set up a new connection or network].
5. Followingly, choose [Manually connect to a wireless network] and click [Next] to continue.
6. Enter information for the wireless network you intend to add and click [Next] to proceed.



7. A new WLAN connection has been made.

System Recovery (Windows 10)


The purposes for using the System Recovery Function may include:

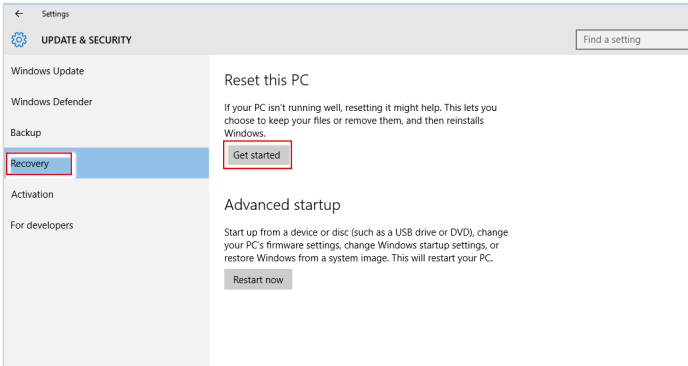
- Restore the system back to the initial status of original manufacturer's default settings.
- When some errors have occurred to the operating system in use.
- When the operating system is affected by virus and is not able to work normally.
- When you want to install the OS with other built-in languages.

Before using the System Recovery Function, please back up the important data saved on your system drive to other storage devices.

If the following solution fails to recover your system, please contact the authorized local distributor or service center for further assistance.

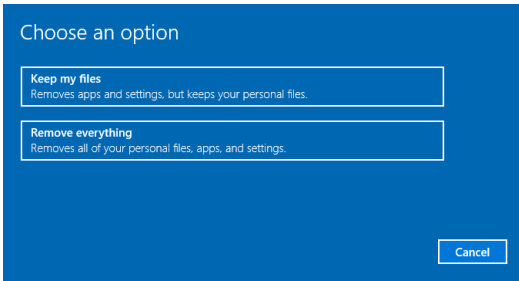
Reset this PC

1. Go to [Start] , click [Settings] and select [Update and security].
2. Select [Recovery] and click [Get started] under [Reset this PC] to start the system recovery.



3-8

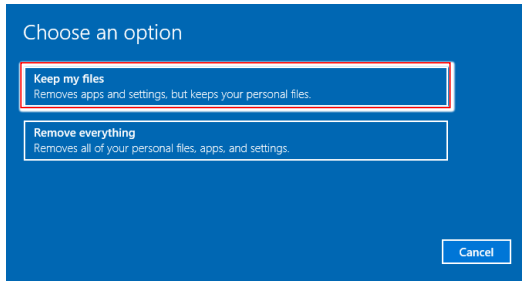
3. The [Choose an option] screen pops up. Choose between [Keep my files] and [Remove everything].



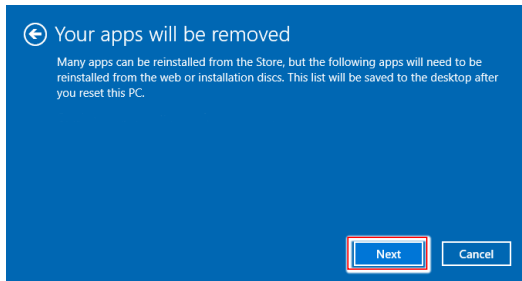
Reset this PC	Keep my files		
	Remove everything	Only the drive where Windows is installed	Just remove my files
		All drives	Remove files and clean the drive
			Just remove my files
			Remove files and clean the drive

► Keep my files

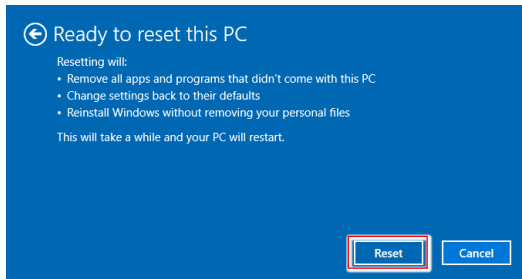
1. Select [Keep my files].



2. The [Your apps will be removed] screen shows a list of apps that will need to be reinstalled from the web or installation discs. Click [Next] to continue.

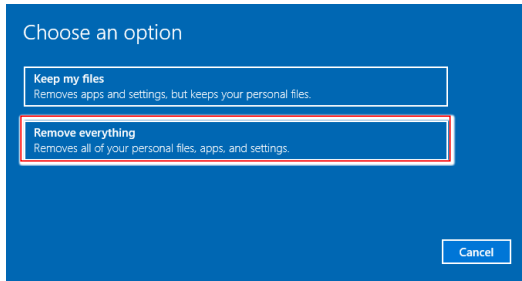


3. The next screen will show the changes to be made during the process. Click [Reset] to start the system reset.

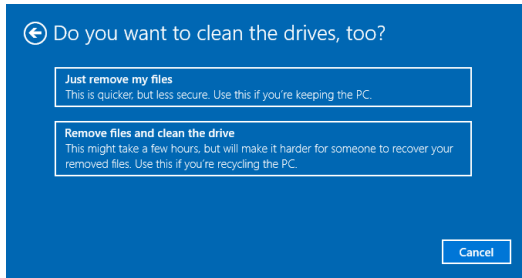


► Remove everything

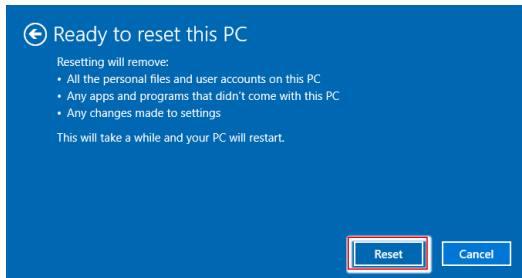
1. Select [Remove everything].



2. If you have multiple hard drives, a screen will pop up, asking you to choose between [Only the drive where Windows is installed] and [All drives].
3. Then select between [Just remove my files] and [Remove files and clean the drive].



4. The next screen will show the changes to be made during the process. Click [Reset] to start the system reset.



System Recovery (F3 Hotkey Recovery)

► Precautions for Using the System Recovery Function

1. If your hard drive and system encountered non-recoverable problems, please use the F3 Hotkey recovery from the Hard Drive first to perform the System Recover Function.
2. Before using the System Recovery Function, please backup the important data saved on your system drive to other storage devices.

► Recovering the system with the F3 Hotkey

Follow the instructions below to continue:

1. Restart the PC.
2. Press the F3 hotkey on the keyboard promptly when the MSI greeting appears on the display.
3. On the “Choose an Option” screen, tap “Troubleshoot”.
4. On the “Troubleshoot” screen, tap “Restore MSI factory” to reset the system to the default settings.
5. On the “RECOVERY SYSTEM” screen, tap “System Partition Recovery”.
6. Follow the on-screen instructions to continue and complete the Recovery Function.

