

IN SEARCH OF INCREDIBLE

Quick Start Guide

دليل التشغيل السريع

Кратко упу̀тване за бърз старт

Stručná příručka

Quick Start-vejledning

Snelstartgids

Lühijuhend

راهنمای شروع سریع

Guide de démarrage rapide

Pikakäynnistysopas

Schnellstarthilfe

Οδηγός γρήγορης έναρξης

Beüzemelési útmutató

Guida Rapida

Panduan Ringkas

クイックスタートガイド

Жылдам іске қосу нұсқаулығы

빠른 시작 설명서

Greitos darbo pradžios vadovas

Ísa pamācība

Hurtigstartsveiledning

Guia de consulta rápida

Instrukcja szybkiej instalacji

Краткое руководство

Ghid de pornire rapidă

Guía de inicio rápida

Vodič za brzo korišćenje

Stručný návod na spustenie

Snabbstartsguide

คู่มือเริ่มตัวอย่างเร็ว

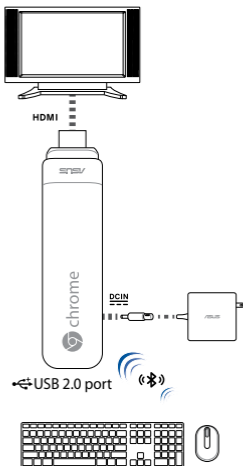
Hızlı Başlatma Kılavuzu

Hồõùng daãn khôõi ñoãng nhanh

Are you using this device for Digital Signage? If so, go to google.com/work/chrome/signage/chromebit for more information.



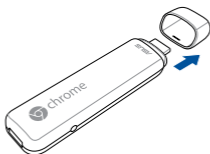
Getting started



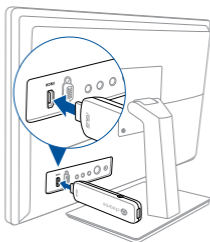
NOTE:

- For best performance, operate at 1°C – 35°C.
- Any peripheral over 500 mA current draw should be connected via a powered USB hub, and not directly to the USB port.
- Ensure that your Chromebit does not block any of the air vents on your monitor display.
- Place your Chromebit or powered USB hub near the side of your monitor to ensure that wireless signals are not obstructed.
- Illustrations for reference only.
- USB hub, keyboard and mouse are not included.
- Visit our multi-language web site at <http://support.asus.com>

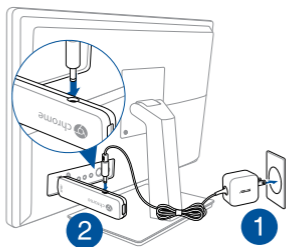
Connecting Chromebit



1. Remove the cap.

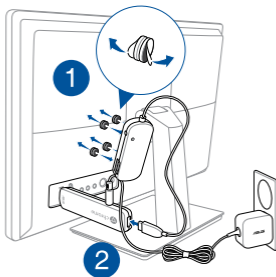


2. Plug your Chromebit into an HDMI port.

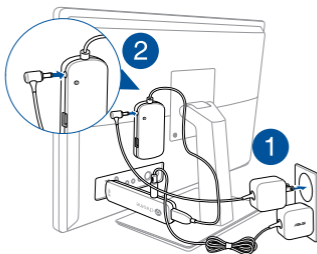


3. Connect the power into your Chromebit.

Connecting USB Hub

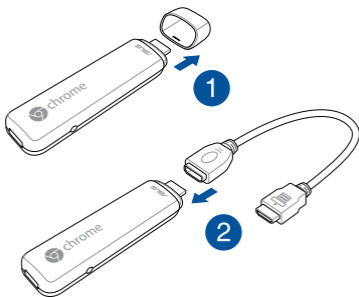


1. Stick your USB Hub to your monitor with the hook and loop sticker set, then connect your USB Hub into your Chromebit.

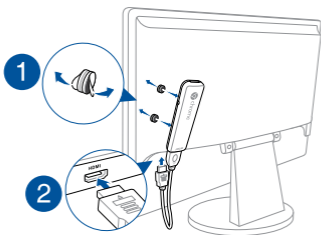


2. Connect the power into your USB Hub.

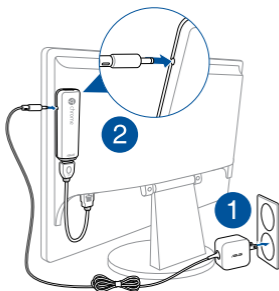
Connecting HDMI extension cable



1. Remove the cap, then connect your HDMI extension cable.



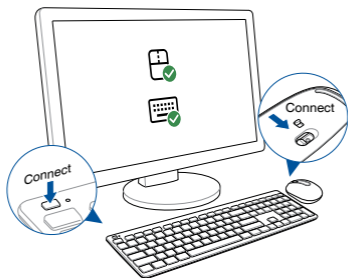
2. Stick your Chromebit to your monitor with the hook and loop sticker set, then plug your Chromebit into an HDMI port.



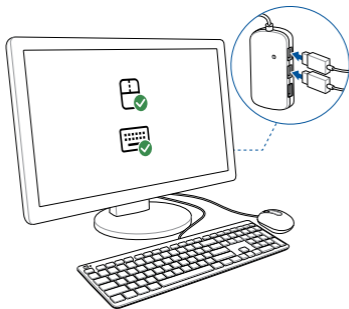
3. Connect the power into your Chromebit.

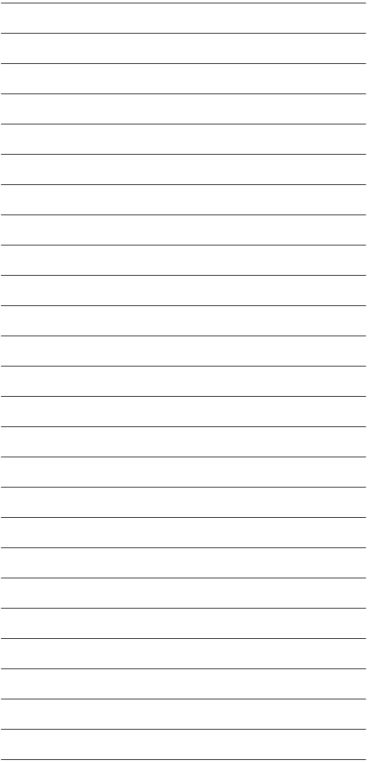
Connecting keyboard and mouse

Bluetooth keyboard and mouse



USB Hub with wired keyboard and mouse





ASUS Contact Information

ASUSTeK COMPUTER INC.

Address	15 Li-Te Road, Peitou, Taipei, Taiwan 11259
Telephone	+886-2-2894-3447
Fax	+886-2-2890-7798
E-mail	info@asus.com.tw
Website	http://www.asus.com

Technical Support

Telephone	+86-21-3429911
Fax	+86-21-58668722, ext. 9101#
Online support	http://support.asus.com/techserv/techserv.aspx

ASUS COMPUTER INTERNATIONAL (America)

Address	800 Corporate Way, Fremont, CA 94539, USA
Telephone	+1-510-739-3777
Fax	+1-510-608-4555
Website	http://usa.asus.com

Technical Support

Support fax	+1-812-284-0883
General support	+1-812-282-4555
Online support	http://www.service.asus.com

ASUS COMPUTER GmbH (Germany and Austria)

Address	Harkort Str. 21-23, D-40880 Ratingen, Germany
Fax	+49-2102-959911
Website	http://eu-rma.asus.com/sales

Technical Support

Telephone	+49-2102-5789555
Support Fax	+49-2102-959911
Online support	http://support.asus.com/techserv/techserv.aspx

EC Declaration of Conformity



We, the undersigned,

Manufacturer:	ASUSTEK COMPUTER INC.
Address:	4F, No. 150, Li-Te Rd, PEITOU, TAIPEI 110, TAIWAN
Authorized representative in Europe:	ASUS COMPUTER GmbH
Address, City:	HARKORT STR. 21-23, 40880 RATINGSCHEN
Country:	GERMANY

declare the following apparatus:

Product name :	Chromebit
Model name :	CS10

conform with the essential requirements of the following directives:

2004/108/EC-EMC Directive

<input checked="" type="checkbox"/> EN 55022:2010+A2:2011	<input checked="" type="checkbox"/> EN 55024:2010
<input checked="" type="checkbox"/> EN 61000-3-2:2006+A2:2009	<input checked="" type="checkbox"/> EN 61000-3-3:2008
<input checked="" type="checkbox"/> EN 55013:2007+A1:2009+A2:2009	<input checked="" type="checkbox"/> EN 55025:2007+A11:2011

1999/5/EC-R&TTE Directive

<input checked="" type="checkbox"/> EN 302 220 V1.8.1(2012-08)	<input checked="" type="checkbox"/> EN 301 488-1 V1.8.2(2011-08)
<input checked="" type="checkbox"/> EN 300 440-1 V1.8.1(2010-08)	<input checked="" type="checkbox"/> EN 301 488-3 V1.4.1(2002-08)
<input checked="" type="checkbox"/> EN 300 440-2 V1.4.1(2010-08)	<input checked="" type="checkbox"/> EN 301 488-4 V1.4.1(2009-08)
<input checked="" type="checkbox"/> EN 301 511 V8.2(2009-03)	<input checked="" type="checkbox"/> EN 301 488-7 V1.3.1(2009-11)
<input checked="" type="checkbox"/> EN 301 808-1 V5.2.1(2011-05)	<input checked="" type="checkbox"/> EN 301 488-8 V1.4.1(2007-11)
<input checked="" type="checkbox"/> EN 301 808-2 V5.2.1(2011-07)	<input checked="" type="checkbox"/> EN 301 488-17 V2.2.1(2010-08)
<input checked="" type="checkbox"/> EN 301 883 V1.2.1(2012-08)	<input checked="" type="checkbox"/> EN 301 488-24 V1.3.1(2010-08)
<input checked="" type="checkbox"/> EN 302 544-2 V1.1.1(2009-01)	<input checked="" type="checkbox"/> EN 302 558-2 V1.2.2(2007-08)
<input checked="" type="checkbox"/> EN 302 622 V1.1.1(2009-01)	<input checked="" type="checkbox"/> EN 302 558-3 V1.3.1(2007-08)
<input checked="" type="checkbox"/> EN 50360:2001	<input checked="" type="checkbox"/> EN 301 357-2 V1.4.1(2008-11)
<input checked="" type="checkbox"/> EN 50476:2010	<input checked="" type="checkbox"/> EN 302 287-1 V1.1.1(2009-07)
<input checked="" type="checkbox"/> EN 50368:2002	<input checked="" type="checkbox"/> EN 302 287-2 V1.1.1(2009-07)
<input checked="" type="checkbox"/> EN 62311:2008	<input checked="" type="checkbox"/> EN 50568:2013

2006/95/EC-LVD Directive

<input type="checkbox"/> EN 60950-1: 2006 / A12: 2011	<input checked="" type="checkbox"/> EN 60950:2002 / A12: 2011
<input type="checkbox"/> EN 60950-1: 2006 / A2: 2013	

2006/125/EC-ERP Directive

<input checked="" type="checkbox"/> Regulation (EC) No. 1275/2008	<input checked="" type="checkbox"/> Regulation (EC) No. 278/2009
<input type="checkbox"/> Regulation (EC) No. 642/2009	<input type="checkbox"/> Regulation (EU) No. 817/2013

2011/65/EU-RoHS Directive

Ver. 140224

CE marking



(EC conformity marking)

Position : CEO
Name : Jerry Shan


Signature : _____

Declaration Date: 31/08/2015
Year to begin affixing CE marking: 2015

DECLARATION OF CONFORMITY

Per FCC Part 2 Section 2. 1077(a)



Responsible Party Name: **Asus Computer International**
Address: **800 Corporate Way, Fremont, CA 94539.**
Phone/Fax No: **(510)739-3777/(510)608-4555**

hereby declares that the product

Product Name : Chromebit
Model Number : CS10

Conforms to the following specifications:

FCC Part 15, Subpart B, Unintentional Radiators

Supplementary Information:

This device complies with part 15 of the FCC Rules. Operation is subject to the following two conditions: (1) This device may not cause harmful interference, and (2) this device must accept any interference received, including interference that may cause undesired operation.

Representative Person's Name : Steve Chang / President


Signature :

Date : Aug. 31, 2015



support.asus.com



1 5 0 6 0 - 6 8 5 0 0 1 0 0