

SAMSUNG Galaxy Note9

Quick Reference Guide



Samsung Care

Samsung Premium Care

Get more than just protection for your device. Pick the time and place, and a team member will meet you to setup, troubleshoot, repair or replace your product.

Enroll, at samsung.com/us/support/premium-care

GET TO KNOW YOUR PRODUCT:

- Access user manuals, troubleshooting and more at samsung.com/us/support

ASK THE COMMUNITY:

- Ask questions and get solutions from Samsung customers, at us.community.samsung.com

CONTACT US FOR SUPPORT:

- For hardware or software support, visit samsung.com/us/support/contact or call us at 1.800.SAMSUNG.
- Find a service location near you, at support-us.samsung.com/cyber/locator/asc_locator.jsp

1 About your phone



Device features

EXPANDABLE STORAGE

- Expand storage with a microSD™ card (sold separately).

FLEXIBLE SECURITY

- Biometric security features

CAMERA

- Live translate
- AR Emoji
- Super slow motion video

S PEN WITH BLUETOOTH

- Remotely open an app or perform a function.

BIXBY

- The smarter way to get things done. Say a command, identify what you're looking at or set a reminder just by pressing a button.

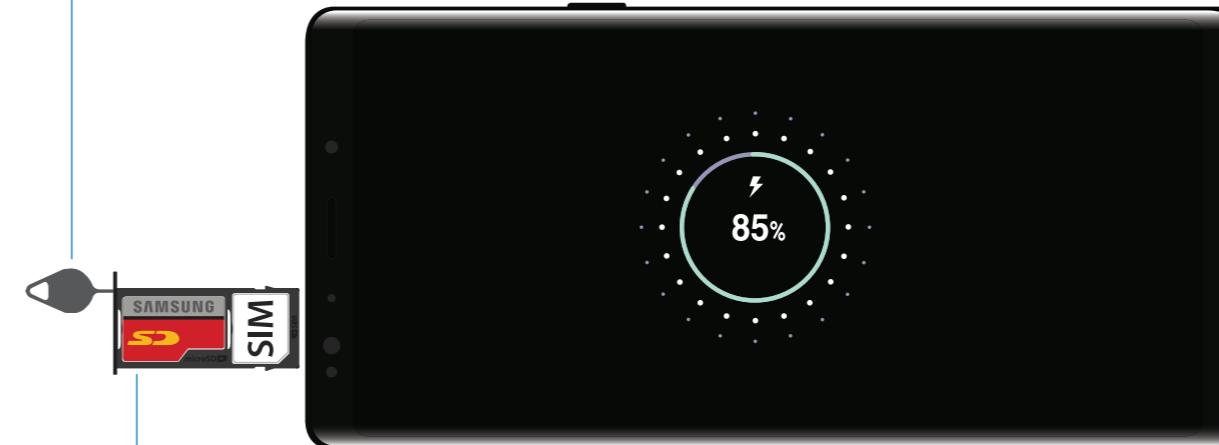
IP68

- Water resistant*

*For more information, see Samsung Terms and Conditions.

2 Set up your phone

REMOVE SIM/microSD TRAY
Use the tool to open the SIM/microSD card tray.



INSERT SIM/microSD CARD
Slide the SIM card and the optional microSD card into the tray with the gold contacts facing down.

CHARGE YOUR DEVICE
Before turning on your phone, charge it fully.


BACKUP AND RESTORE
For help transferring contacts, photos and other content from your old phone, visit: samsung.com/smarts witch

Caution: Use only Samsung approved charging devices and accessories. Samsung accessories are designed for your device to maximize battery life. Using other accessories may void your warranty and may cause damage.

3 Customize your phone

Pinch the home screen to change the look of your phone:



From a home screen swipe up, and then tap **Settings**  to customize, connect or turn on options to personalize your phone:

CONNECTIONS
Connect to a Wi-Fi™ network, Bluetooth device and other connection options.

SOUNDS AND VIBRATION
Set device volume and sounds.

DISPLAY
Customize the home screen and display brightness.

LOCK SCREEN
Select a screen lock type and set security options.

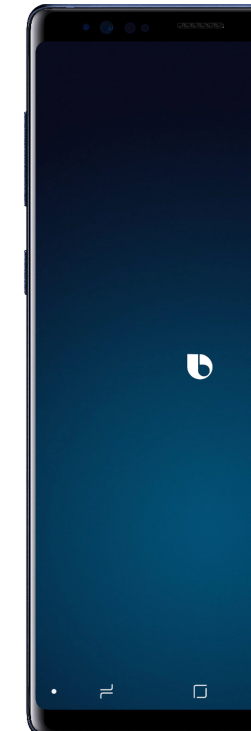
BIOMETRICS AND SECURITY
Set biometric security options.

Bixby

Set reminders, send messages, search and access content on your phone and Internet.

Press the **Bixby** button and follow the prompts.

Note: For more information about Bixby, visit samsung.com/us/support/owners/app/Bixby.



Learn more



Need help?

The Help feature gives access to the user manual and information on how to use your device.

To open, from the Home screen, swipe up and tap **Settings** > **Help**.

- Make a call
- Contacts
- Health & Fitness
- Personalized device support
- Accessibility settings

Search

From the home screen swipe up, and search for apps, settings, contacts and more.



Camera



CAMERA MODES

Swipe right or left to select a mode

BIXBY VISION

Identify objects or locations

TOOLS PANEL

Swipe left or right to select effects

RECORD

Record a video

CAPTURE AND ZOOM

Capture a photo, or drag left or right to zoom in and out



SUPER SLOW-MO

Super slow-mo captures several frames per second, slowing down reality so you can enjoy every frame.

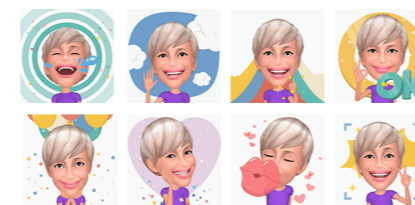
AR EMOJI

Create an animated emoji that looks like you.



STICKERS

Express yourself while messaging with friends.



Messages



Tap to create a new message.



ATTACHMENT

Add content from the gallery, capture and add a photo, or share your location.



STICKERS and GIFs

Share the cartoon version of yourself, or say it with a GIF.

KEYBOARD ICONS



EMOTICON

Skip the boring text and send a fun emoji.



STICKERS

Share the cartoon version of yourself or preloaded stickers.



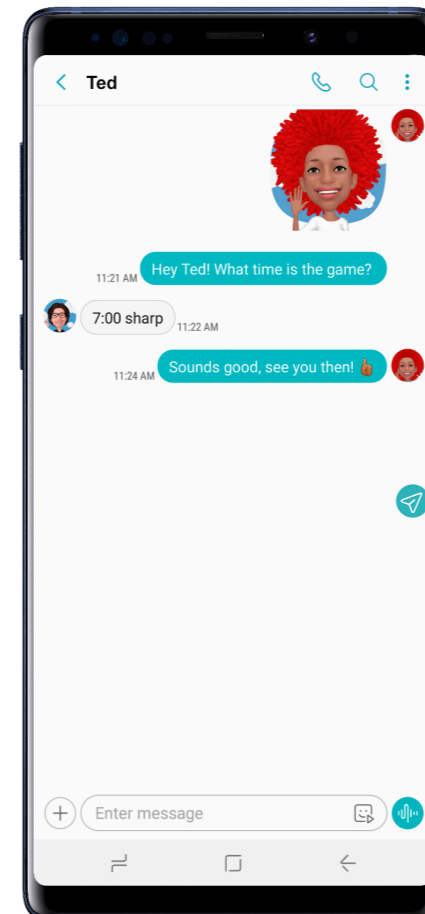
GIFs

Send your very own GIFs.



AUDIO MESSAGE

Say it with an audio message.



S Pen with Bluetooth

UNLEASH THE S PEN

Push the S Pen inward and, then pull it out.

When you remove the S Pen, Air commands launches.



AIR COMMANDS

- Create note:** Create customized notes.
- View all notes:** View all notes created.
- Smart select:** Outline and crop a screen.
- Screen write:** Capture a screen image and write on it.
- Live message:** Create live messages and GIFs.
- Translate:** Hover the S Pen over a word to view its definition and pronunciation.
- PENUP:** Use the S Pen to draw, color, edit, and share live drawings.
- Add shortcuts:** Select an app or function to open or turn on using Air command.

¹Wireless voice, data and messaging services compatible with most major U.S. GSM and CDMA networks. Visit www.samsung.com for more information on your device. Support for certain features and services such as VoWiFi and hotspot, vary by wireless service provider. See provider for compatibility details.

©2018 Samsung Electronics America, Inc. Samsung and Galaxy Note are both trademarks of Samsung Electronics Co., Ltd. Android, Google, Google Play, and other marks are trademarks of Google LLC. Other company and product names mentioned herein may be trademarks of their respective owners. Screen images simulated. Appearance of phone may vary.

S PEN BUTTON

S PEN REMOTE

Press and hold the S Pen button to open an app remotely.

A single or double press can open an app, capture a photo, navigate, scroll and more.

Remove the S Pen, and tap **Settings** > **S Pen remote** to set the S Pen remote features.

SETTINGS

Set up S Pen remote options

