

Personal Audio Docking System

Operating Instructions US

Manual de instrucciones ES

Manual de instrucciones ES

Manual de instrucciones ES

English

English

English

English

English

English

English

English

English

English

English

English

English

English

English

English

English

English

English

English

English

English

English

English

English

English

English

English

English

English

English

English

English

English

English

English

English

English

English

English

English

English

English

English

English

English

English

English

English

English

English

English

English

English

English

English

English

English

English

English

English

English

English

English

English

English

English

English

English

English

English

English

English

English

English

English

English

English

English

English

English

English

English

English

English

English

English

English

English

English

English

English

English

English

English

English

English

English

English

English

English

English

English

English

English

CD player

- Do not leave the unit in a location near heat sources, in a place subject to direct sunlight, excessive dust or mechanical shock or in a car subject to the direct rays of the sun.

- Do not place the unit on an inclined or unstable place.
- Do not place anything within 10 mm of the side of the cabinet. The ventilation holes must be unobstructed for the unit to operate properly and prolong the life of its components.

- Since a strong magnet is used for the speakers, keep strong credit cards using magnetic coding or spring-wound watches away from the unit to prevent possible damage from the magnet.

On operation

- If the unit is brought directly from a cold to a warm location, or is placed in a very damp room, moisture may condense on the lens inside the CD player section. Should this occur the unit will not operate properly. In this case, remove the CD and wait about an hour for the moisture to evaporate.

- Cleaning the cabinet**
 - Clean the cabinet, panel and controls with a soft cloth slightly moistened with a mild detergent solution. Do not use any type of abrasive pad, scouring powder, or solvent, such as alcohol or benzine.

NOTES ON LITHIUM BATTERY

- Wipe the battery with a dry cloth to assure a good contact.
- Be sure to observe the correct polarity when installing the battery.
- Do not hold the battery with metallic tweezers, otherwise a short-circuit may occur.

Note

- In the Operating Instructions, "iPod" is used as a general reference to functions on an iPod or iPhone, unless otherwise specified by the text or illustrations.

If you have any questions or problems concerning your unit, please consult your nearest Sony dealer.

General information

Specifications

AUDIO POWER SPECIFICATIONS

POWER OUTPUT AND TOTAL HARMONIC DISTORTION

With 8 ohm loads both channels driven, from 150 Hz - 10,000 Hz; rated 1.7 watts per channel minimum RMS power, with no more than 10% total harmonic distortion in AC operation.

CD player

Compact disc digital audio system
Laser diode properties
Emission duration: Continuous
Worst output: Less than 44.6 µW
(This output is the value measurement at a distance of 200 mm from the objective lens surface on the optical pick-up block with 7 mm aperture.)
Number of channels 2

Frequency response
20 Hz - 20,000 Hz +/-2 dB
Wow and flutter: Less than 0.1%
Below measurable limit

iPod

DC out: 5 V
MAX: 1 A
(AC only)

Radio

Frequency range
FM: 87.5 MHz - 108 MHz
AM: 530 kHz - 1,710 kHz
Antennas
FM: Telescopic antenna
AM: Built-in ferrite bar antenna

General

Speaker
Full range: 77 mm (3 1/8 inches) dia., 8 Ω, cone type (2)
Input
AUDIO IN jack (ø3.5 mm stereo minijack)

Power output
1.7 W + 1.7 W (at 8 Ω, 10% harmonic distortion)
Power requirements
120 V AC, 60 Hz
9 V DC, 6 × R14 (size C) batteries

Power consumption
AC 18 W
Battery life
FM reception
Sony R14P: approx. 4 h
Sony alkaline LR14: approx. 18 h

CD playback

Sony R14P: approx. 1.5 h
Sony alkaline LR14: approx. 7 h

Dimensions
Approx. 356 mm × 134 mm × 234 mm (w/h/d)
(14 3/8 inches × 5 1/8 inches × 9 1/8 inches) (incl. projecting parts)

Mass
Approx. 2.5 kg (5 lb 8 oz) (incl. batteries)
Supplied accessories
AC power cord (1)
Remote control (with a lithium battery) (1)
Operating instructions (this document) (1)
Cushion for small-size iPod (1)

Compatible iPod/iPhone models

The compatible iPod/iPhone models are as follows.
Update the software of the iPod/iPhone to the latest version before using it with this unit.

iPod touch (4th generation)
iPod touch (3rd generation)
iPod touch (2nd generation)
iPod nano (6th generation)*
iPod nano (5th generation)
iPod nano (4th generation)
iPod nano (3rd generation)
iPod classic
iPhone 4S
iPhone 4
iPhone 3GS
iPhone 3G

* The iPod nano (6th generation) cannot be controlled by the remote when the combination of "MENU", "▲", "▶" and "ENTER" is pressed.
* CD-DA is the abbreviation for Compact Disc Digital Audio. It is a recording standard used for Audio CDs.

Design and specifications are subject to change without notice.

Troubleshooting

General

- The power is not on.**
 - Connect the AC power cord to the wall outlet securely.
 - Make sure the batteries are inserted correctly.
 - Replace all the batteries with new ones if they are weak.

- There is no sound.**
 - Adjust **VOLUME +/-** (VOL +/-) on the remote.
- Noise is heard.**
 - Someone is using a portable telephone or other equipment that emits radio waves near the unit.
 - Move the portable telephone, etc., away from the unit.

- The sound is weak when using batteries.**
 - Replace all the batteries with new ones if they are weak.
- The backlight of the display does not light up.**
 - It is designed that way for this unit, and is not a malfunction.

iPod

- There is no sound.**
 - Make sure the iPod is connected firmly.
 - Make sure that the function for iPod is activated.

- The iPod cannot be operated with this unit.**
 - Make sure the iPod is securely connected.
 - Check that the iPod is compatible with this unit. (See "Compatible iPod/iPhone models.")

- The iPod cannot be charged.**
 - Make sure the iPod is securely connected.
 - Check that the iPod is compatible with this unit. (See "Compatible iPod/iPhone models.")
 - You cannot charge the iPod when the unit is using batteries.

On power source

- For AC operation, use the supplied AC power cord; do not use any other type.
- Unplug the unit from the wall outlet when it is not being used for an extended period of time.

- When the batteries are not to be used, remove them to avoid damage that can be caused by battery leakage or corrosion.

Spanish

Spanish

Spanish

Spanish

Spanish

Spanish

Spanish

Spanish

Spanish

Spanish

Spanish

Spanish

Spanish

Spanish

Spanish

Spanish

Spanish

Spanish

Spanish

Spanish

Spanish

Spanish

Spanish

Spanish

Spanish

Spanish

Spanish

Spanish

Spanish

Spanish

Spanish

Spanish

Spanish

Spanish

Spanish

Spanish

Spanish

Spanish

Spanish

Spanish

Spanish

Spanish

Spanish

Spanish

Spanish

Spanish

Spanish

Spanish

Spanish

Spanish

Spanish

Spanish

Spanish

Spanish

Spanish

Spanish

Spanish

Spanish

Spanish

Spanish

Spanish

Spanish

Spanish

Spanish

Spanish

Spanish

Spanish

Spanish

Spanish

Spanish

Spanish

Spanish

Spanish

Spanish

Spanish

Spanish

Spanish

Spanish

Spanish

Spanish

Spanish

Spanish

Spanish

Spanish

Spanish

Spanish

Spanish

Spanish

Spanish

Spanish

Spanish

Spanish

Spanish

Spanish

Spanish

Spanish

Spanish

Spanish

Spanish

Spanish

Spanish

Spanish

Spanish

Spanish

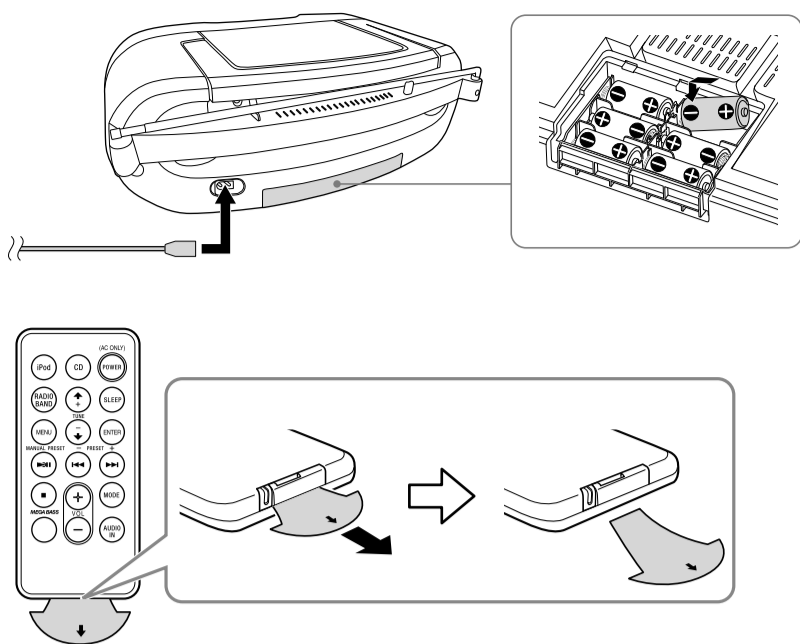
Spanish

Spanish

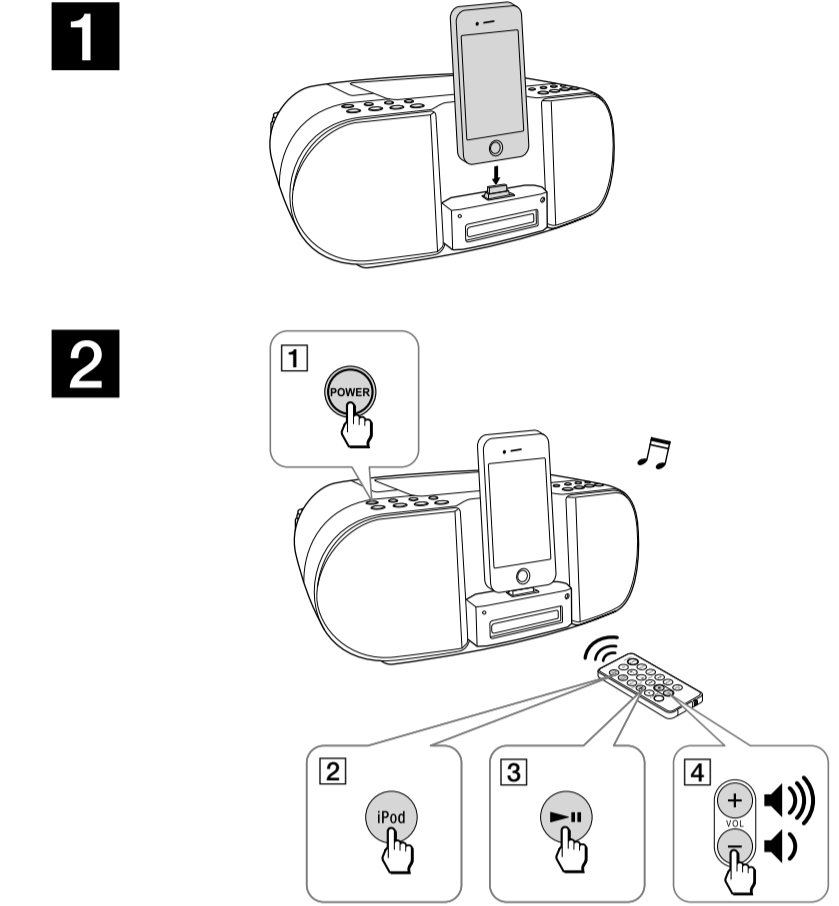
Spanish

Spanish

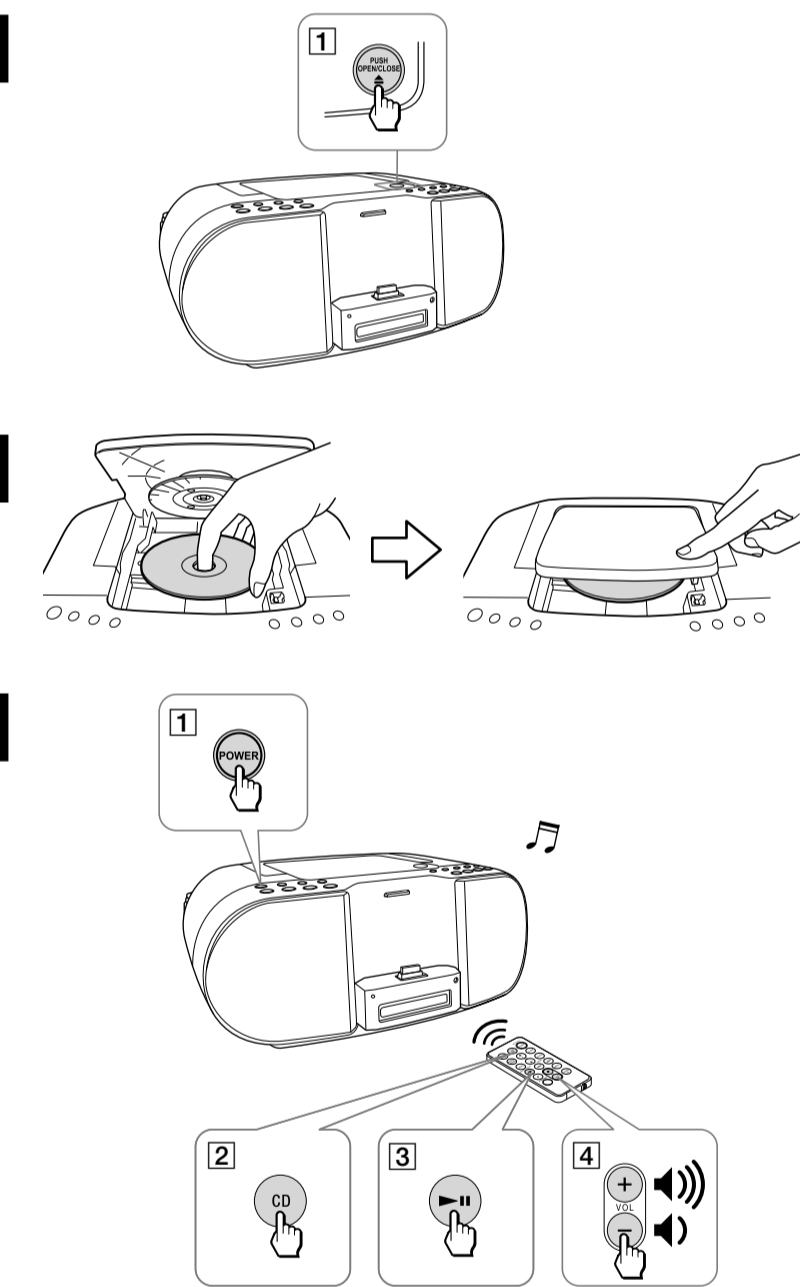
Startup Guide/Guía de inicio rápido



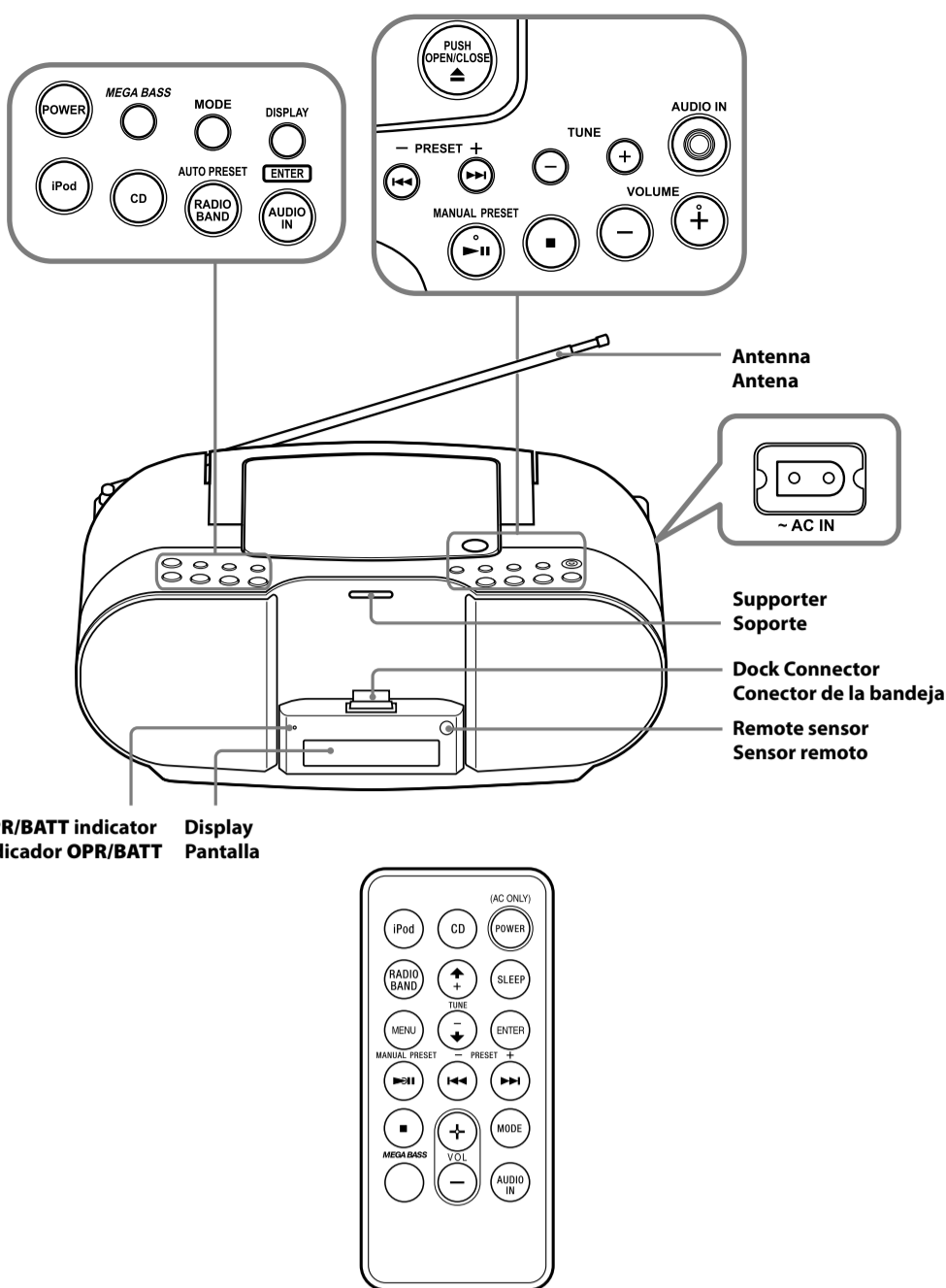
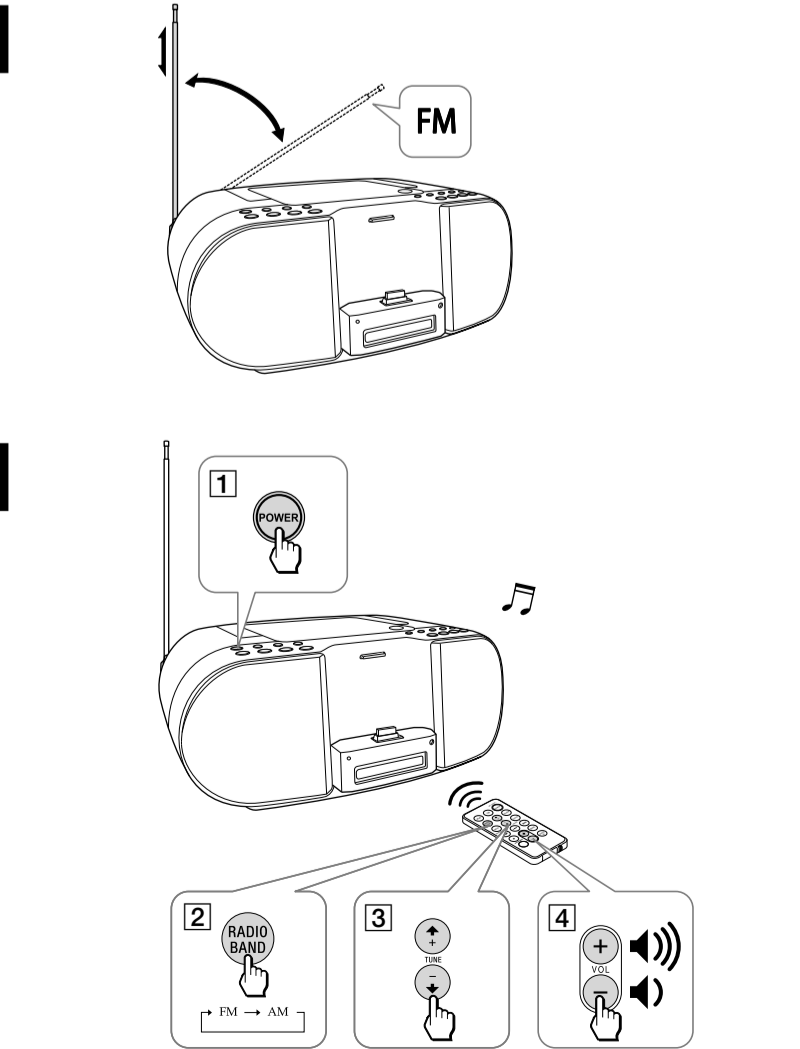
iPod/iPhone



CD



Radio

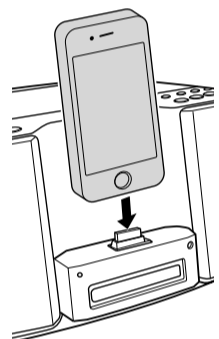


English

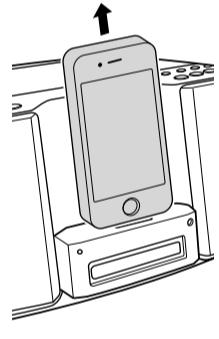
Operations

How to handle an iPod

To set an iPod



To remove an iPod



- An iPod in a case or cover can be set in this unit. However, if the case or cover interferes with the connection, remove the case or cover before setting the iPod on the Dock Connector.
- When placing or removing the iPod, hold it at the same angle as the Dock Connector on the unit. Do not pull the iPod forward too far.
- When placing or removing the iPod, hold the unit securely.
- Do not twist or bend the iPod, as this may result in connector damage.
- Remove the iPod when transporting it; otherwise, a malfunction may result.
- If the iPod does not reach the supporter on the front of the unit, attach the supplied cushion below the supporter.

To turn the unit on/off

Press **POWER**. The **OPRI/BATT** indicator lights up when the unit is turned on.

Adjusting the volume

Press **VOLUME +/-** (**VOL +/-** on the remote).

Operating an iPod

- Set an iPod on the Dock Connector. For details, see "How to handle an iPod."
- Press **POWER** and then press **iPod**. "iPod" appears in the display.
- Press **II**. The iPod begins to play back. If the iPod does not start playing back, operate directly on the iPod. You can operate the connected iPod by the unit or the buttons on the iPod.

To	Press
Pause playback	II
Resume playback	To resume play, press it again.
Stop playback	■
Go to the next track	II
Go back to the previous track	II
Locate a point while listening to the sound	II (forward) or II (backward)
Select a menu (remote only)	Press MENU , and ↑ or ↓ to select a menu, then press ENTER .
Go back to the previous menu (remote only)	Press MENU .

* During playback, this operation returns to the beginning of the current track. To go back to the previous track, press twice.

- If a pop-up message appears on the display of the iPod touch or iPhone, see "About App."
- Some operations may differ or may not be available between different models of iPod.
- If the battery of the iPod is extremely low, charge it for a while before operation.

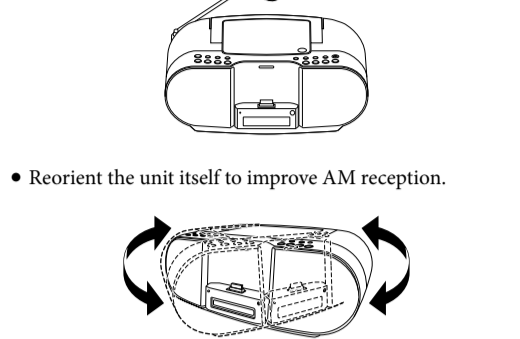
3 Hold down TUNE + or – until the frequency digits begin to twinkle in the display.

The unit automatically scans the radio frequencies and stops when it finds a clear station. If you cannot tune in a station, press **TUNE +** or – repeatedly to change the frequency step. When an FM stereo broadcast is received, **ST** appears.

- **Notes**
- If you touch or operate an iPod connected to this unit while listening to AM/FM, noise may occur. Avoid touching or operating the iPod in this case.
- If you are listening to the radio with an iPhone connected to the unit, interference with radio reception may occur. Remove the iPhone in this case.

To improve the reception

- Extend the antenna to its full length and reorient it for best FM reception.



- Reorient the unit itself to improve AM reception.

Note

- Adjust the direction of the antenna by holding the bottom of it. The antenna can be damaged if you move the antenna with excessive force.

To set monoaural sound if stereo reception is poor

The unit automatically switches between stereo and monoaural output, depending on reception conditions. However, if stereo reception is unstable, you can manually set for monoaural output to improve the sound. Press **MODE** to show "MONO" in the display. (To resume stereo reception, press **MODE** again to show "ST" in the display.)

To preset radio stations

You can store radio stations into the unit's memory. You can preset up to 30 radio stations, 20 for FM and 10 for AM in any order.

- Press **POWER**.
- Press **RADIO BAND** to select the band.
- Hold down **AUTO PRESET/RADIO BAND (RADIO BAND on the remote)** for 2 seconds until "AUTO" flashes in the display.
- Press **DISPLAY/ENTER (ENTER on the remote)**. The stations are stored in memory from the lower frequencies to the higher ones.

If a station cannot be preset automatically

You need to preset a station with a weak signal manually.

- Press **POWER**.
- Press **RADIO BAND** to select the band.
- Tune in a station you want using **TUNE +** or –.
- Press **MANUAL PRESET** to enter manual preset mode.

- Press **PRESET +** or – until the preset number you want for the station flashes in the display.
- Press **DISPLAY/ENTER (ENTER on the remote)**. The new station replaces the old one.

- The preset radio stations remain in memory even if you unplug the AC power cord or remove the batteries.
- To cancel the preset number setting, press **MANUAL PRESET** instead of **ENTER** in step 6.

To preset radio stations

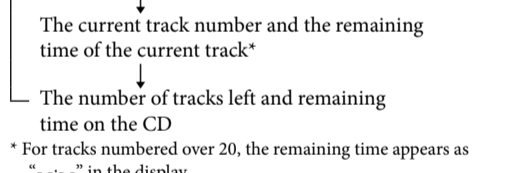
- Press **POWER**.
- Press **RADIO BAND** to select the band.
- Press **PRESET +** or – to tune in the stored station.

Using the display

CD mode

To check the total track number and playing time in stop mode, press **DISPLAY/ENTER** on the unit.

To check the remaining time in play/pause mode, press **DISPLAY/ENTER** on the unit repeatedly. The display changes as follows:



* For tracks numbered over 20, the remaining time appears as "..." in the display.

Radio mode

To display the frequency or a preset station number

Each time you press **DISPLAY/ENTER** on the unit, the display changes to the frequency or a preset station number.

Connecting optional components

You can enjoy the sound from an optional component, such as a portable digital music player, through the speakers of this unit. Be sure to turn off the power of each component before making any connections. For details, refer to the instruction manual of the component to be connected.

- Connect the **AUDIO IN** jack to the line output jack of the portable digital music player or other component using an audio connecting cable (not supplied).
- Press **POWER** to turn the unit on.
- Turn the connected component on.
- Press **AUDIO IN** and start playback on the connected component.

"AUDIO IN" appears in the display, and the sound from the connected component is output from the speakers of this unit.

- The necessary type of audio connecting cable depends on the optional component. Be sure to use the correct type of cable.
- If the volume level is low, adjust the volume of the unit first. If the volume is still too low, adjust the volume of the connected component.

Other useful functions

Reinforcing the bass sound

Press **MEGA BASS**. "MEGA BASS" appears in the display.

To return to normal sound, press the button again.

Falling asleep to music

This function is only available by using the remote.

- Play the music source you want.
- Press **SLEEP** repeatedly to set the sleep timer duration.

Each time you press the button, the indication changes as follows:

60 → 90 → 120 → OFF → 10 → 20 → 30

The minute number blinks. Then the unit goes back to the previous display.

The sleep timer is set and the unit goes off after the duration you set.

To cancel the sleep function

Press **POWER** to turn off the power, or press **SLEEP** on the remote repeatedly to set the sleep timer to "OFF" in step 2.

About App

A dedicated Dock App for iPod touch/iPhone available at Apple App Store.

Search for "D-Sappli" and download the free App to find out more about the functions.

- **Features**
- D-Sappli includes various timer functions: Alarm, Music Play Timer and Sleep Timer.
- You can set up to 10 alarms, using songs in iPod or Preset Sound in D-Sappli for the alarm sound.
- Music Play Timer allows you to play/pause desired music at a desired time. Sleep Timer allows you to specify a time at which to stop music playback. Alarm, Music Play Timer and Sleep Timer work in combination with the power supply of the unit.
- Alarm, Music Play Timer and Sleep Timer are available only when D-Sappli is activated.
- D-Sappli can display a list of Radio Preset Stations programmed in this unit. You can rename the Radio Preset Stations, and change their preset numbers on the D-Sappli. Preset numbers and order will also be changed accordingly in the unit.
- D-Sappli also includes a clock display enlarge feature.

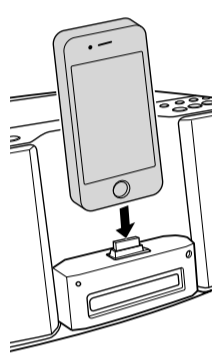
- **Notes**
- If the App to link with this unit is not downloaded to the iPod touch/iPhone, a pop-up message prompting you to download D-Sappli for the alarm sound. Deactivate the App's link function to stop the pop-up message.
- To deactivate the App's link function: Connect the AC power source, and then press **POWER** to turn off the unit. Remove the iPod touch/iPhone from the Dock Connector. While holding down **II**, also press and hold **POWER** on the unit for at least 2 seconds. "OFF" appears in the display to show that the App's link function has been deactivated.
- To re-activate the App's link function, repeat the above steps. "ON" appears in the display to show that the App's link function has been activated.

Español

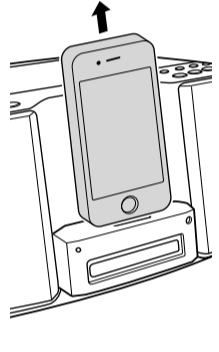
Operaciones

Cómo manejar un iPod

Para colocar un iPod



Para extraer un iPod



- **Notes**
- En esta unidad, se puede colocar el iPod con su estuche o funda. Sin embargo, si el estuche o funda interfieren con la conexión, retírela antes de colocar el iPod en el conector de la bandeja.
- Al colocar o extraer el iPod, sosténgalo en el mismo ángulo que el conector de la bandeja de la unidad. No jale mucho el iPod hacia adelante.
- Al colocar o extraer el iPod, sujete la unidad con firmeza.
- No gire ni incline el iPod ya que se podría dañar el conector.
- Extraiga el iPod al transportarlo; de otra manera se podrían causar daños.
- Si el iPod no llega al soporte ubicado en el frente de la unidad, conecte la almohadilla suministrada que está debajo del soporte.

Para encender/apagar la unidad

Presione **POWER**. El indicador **OPRI/BATT** se ilumina al encender la unidad.

Consejo

- No hay luz de fondo de pantalla.

Ajuste del volumen

Presione **VOLUME +/-** (**VOL +/-** en el control remoto).

Reproducción de un iPod

- Coloque un iPod en el conector de la bandeja. Para obtener detalles, consulte "Cómo manejar un iPod."
- Presione **POWER** y luego presione **iPod**. Aparece "iPod" en la pantalla.

- Presione **II**. Comienza la reproducción del iPod. Si el iPod no comienza la reproducción, opere directamente desde el iPod. Puede utilizar el iPod conectado mediante la unidad o los botones del iPod.

Para	Presione
Poner en pausa la reproducción	II
Para reanudar la reproducción, presione la otra vez.	To resume play, press it again.
Detener la reproducción	■
Ir a la siguiente pista	II
Volver a la pista anterior	II
Localizar un punto mientras escucha sonido	II (avanzar) o II (retroceder)
Localizar un punto mientras observa la pantalla	II (avanzar) o II (retroceder) durante la reproducción y retener hasta encontrar el punto deseado.
Seleccione un menú (sólo control remoto)	Presione MENU , y ↑ o ↓ para seleccionar un menú, y luego presione ENTER .
Vuelva al menú anterior (sólo control remoto)	Presione MENU .

* Durante la reproducción, esta operación vuelve al principio de la pista actual. Para volver a la pista anterior, presione dos veces.

- Si aparece un mensaje emergente en la pantalla del iPod touch o iPhone, consulte "Acerca de App."
- Algunas operaciones pueden no coincidir o no estar disponibles según el modelo de iPod.
- Si la batería del iPod está casi agotada, cárguela antes de utilizarlo.

• Sony declina toda responsabilidad en el caso de la pérdida o corrupción de datos grabados en el iPod al utilizarlo conectado a esta unidad.

• Para obtener información detallada sobre las condiciones ambientales para utilizar el iPod, visite el sitio web de Apple Inc.

Para extraer el iPod

Para obtener detalles, consulte "Cómo manejar un iPod."

Para cargar un iPod (sólo CA)

Puede utilizar la unidad como un cargador de batería del iPod cuando la fuente de alimentación de CA suministra la energía.

La carga comienza cuando el iPod se conecta a la unidad. El estado de carga aparece en la pantalla del iPod. Para obtener más información, consulte el manual del usuario del iPod.

Reproducir un CD

- Presione **▲ PUSH OPEN/CLOSE** y coloque un disco con la etiqueta hacia arriba en el compartimento del CD. Para cerrar el compartimento del CD, presione **▲ PUSH OPEN/CLOSE**.
- Presione **POWER**.
- Presione **CD**.
- Presione **II**.

Número de pista	Tiempo de reproducción
01	00:01

Para	Presione
Poner en pausa la reproducción	II
Para reanudar la reproducción, presione la otra vez.	To resume play, press it again.
Detener la reproducción	■
Ir a la siguiente pista	II
Volver a la pista anterior	II
Localizar un punto mientras escucha durante la reproducción y retener hasta encontrar el punto deseado.	II (avanzar) o II (retroceder)
Localizar un punto mientras observa la pantalla	II (avanzar) o II (retroceder) durante la pausa y retener hasta encontrar el punto deseado, luego presione II .
Retirar el CD	▲ PUSH OPEN/CLOSE

* Durante la reproducción, esta operación vuelve al principio de la pista actual. Para volver a la pista anterior, presione dos veces.

Nota

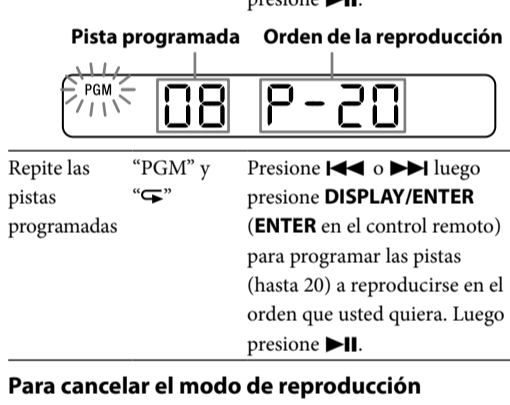
- Esta unidad no puede reproducir un formato de CD de música que no sea CD-DA, (como los archivos MP3/WMA).

Para seleccionar un modo de reproducción de CD

Presione **MODE** hasta que aparezca "1", "SHUF", "SHUF" y "PGM", o "PGM" y "PGM" en la pantalla. Luego proceda de la siguiente manera:

Para seleccionar	Luego haga esto
Repite una sola pista	Presione II o II para seleccionar la pista que desea repetir, luego presione II .
Repite todas las pistas	Presione II .
Reproducción en modo aleatorio	Presione II .
Repite las pistas en orden aleatorio	Presione II .
Reproducción programada	Presione II o II luego presione DISPLAY/ENTER (ENTER en el control remoto) para programar las pistas (hasta 20) a reproducirse en el orden que usted quiera. Luego presione II .

Pista programada	Orden de la reproducción
Repite las pistas programadas	Presione II o II luego presione DISPLAY/ENTER (ENTER en el control remoto) para programar las pistas (hasta 20) a reproducirse en el orden que usted quiera. Luego presione II .



Para cancelar el modo de reproducción seleccionado

Presione **MODE** varias veces hasta que el modo seleccionado desaparezca de la pantalla.

Para comprobar la pista programada y el orden de reproducción en la pantalla

Para comprobar el orden de las pistas antes de reproducir, presione **DISPLAY/ENTER (ENTER en el control remoto)**. Cada vez que presione el botón, el número de pista aparecerá en el orden programado.

Para cambiar el programa actual

Presione **■** una vez si el CD se detiene y dos veces si el CD se está reproduciendo. El programa actual se borrará. Luego cree un nuevo programa siguiendo el procedimiento de programación.

Notes

- Si intenta programar 21 pistas o más, aparecerá "FULL" en la pantalla.
- Puede reproducir el mismo programa otra vez, debido a que el programa se guarda hasta que usted abre el compartimento de CD.

Escuchar la radio

- Presione **POWER**.
- Presione **RADIO BAND** varias veces. Cada vez que presiona el botón, la banda de radio alterna entre AM y FM.
- Mantenga presionado **TUNE +** o – hasta que los dígitos de frecuencia comiencen a cambiar en la pantalla.

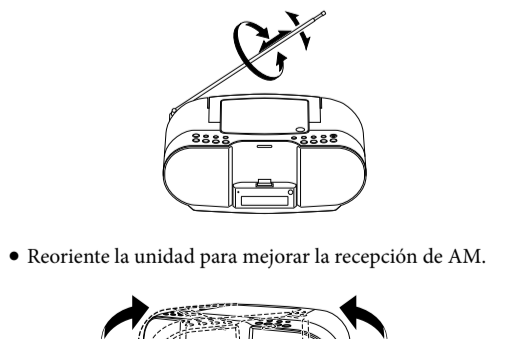
La unidad explora automáticamente las frecuencias de radio y se detiene cuando encuentra una estación clara. Si no puede sintonizar una emisora, presione **TUNE +** o – varias veces para cambiar la frecuencia de a una por vez.

Si se recibe una difusión de estéreo FM, aparecerá **ST** en la pantalla.

- Si toca o utiliza un iPod conectado a esta unidad mientras escucha AM/FM, posiblemente escuche ruido. Evite tocar o usar el iPod en este caso.
- Si escucha la radio con un iPhone conectado a la unidad, posiblemente haya interferencias con la recepción de la radio. Quite el iPhone en este caso.

Mejorar la recepción

- Extienda la antena por completo y orientéla para lograr la mejor recepción de FM.



- Reorientar la unidad para mejorar la recepción de AM.

Nota

- Ajuste la dirección de la antena sujetando su parte inferior. La antena puede dañarse si la mueve con fuerza excesiva.

Para cancelar la función Sleep

Presione **POWER** para apagar la unidad, o presione **SLEEP** en el control remoto varias veces para configurar el Sleep Timer en "OFF" en el paso 2.

Configurar el sonido monoaural si la recepción estéreo es mala

La unidad cambia automáticamente entre la salida estéreo y monoaural en función de las condiciones de recepción. No obstante, si la recepción estéreo no es estable, puede configurar manualmente la salida monoaural para mejorar el sonido.

Presione **MODE** para mostrar "MONO" en la pantalla. (Para reanudar la recepción estéreo, presione **MODE** otra vez para mostrar "ST" en la pantalla.)

Preestablecer estaciones de radio

Puede almacenar las emisoras de radio en la memoria de la unidad. Puede preestablecer hasta 30 emisoras de radio, 20 para FM y 10 para AM en cualquier orden.

- Presione **POWER**.
- Presione **RADIO BAND** para seleccionar la banda.
- Mantenga presionado **AUTO PRESET/RADIO BAND (RADIO BAND en el control remoto)** durante 2 segundos hasta que parpadee "AUTO" en la pantalla.
- Presione **DISPLAY/ENTER (ENTER en el control remoto)**. Las emisoras se almacenan en la memoria de las frecuencias más bajas a las más altas.

Si no se puede preestablecer una estación de forma automática

Posiblemente necesite preestablecer una emisora con una señal débil de forma manual.

- Presione **POWER**.
- Presione **RADIO BAND** para seleccionar la banda.
- Sintonice la emisora que desea usando **TUNE +** o –.
- Presione **MANUAL PRESET** para ingresar el modo preestablecido manual.
- Presione **PRESET +** o – hasta que el número preestablecido que desea para la emisora parpadee en la pantalla.
- Presione **DISPLAY/ENTER (ENTER en el control remoto)**. La nueva estación reemplaza a la anterior.

Sugerencias

- Las emisoras de radio preestablecidas permanecen en la memoria incluso si desenchufa el cable de alimentación de CA o retira las baterías.
- Para cancelar la configuración de número preestablecido, presione **MANUAL PRESET** en lugar de **ENTER** en el paso 6.

Para preestablecer estaciones de radio preestablecidas

- Presione **POWER**.
- Presione **RADIO BAND** para seleccionar la banda.
- Presione **PRESET +** o – para sintonizar la emisora almacenada.

Cómo usar la pantalla

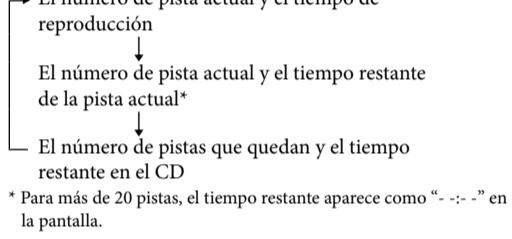
Modo CD

Para comprobar el número total de pistas y el tiempo de reproducción

En el modo de detención, presione **DISPLAY/ENTER** en la unidad.

Para comprobar el tiempo restante

En el modo de reproducción/pausa, presione **DISPLAY/ENTER** en la unidad varias veces. La pantalla cambia de la siguiente manera:



* Para más de 20 pistas, el tiempo restante aparece como "..." en la pantalla.

Modo radio

Para visualizar la frecuencia o un número de emisora presintonizada

Cada vez que presione **DISPLAY/ENTER** en la unidad, la pantalla cambia a la frecuencia o un número de emisora presintonizada.

Conexión de componentes opcionales

Es posible disfrutar del sonido de un componente opcional, como un reproductor de música digital portátil, a través de los altavoces de la unidad. Asegúrese de apagar todos los componentes antes de realizar las conexiones. Para obtener