



3-Series Lockable Patch Cables

Get premium performance and lockability—
no need to buy new cables.

- CAT6A 650-MHz (F/UTP)
- CAT6 550-MHz (UTP)
- CAT6 250-MHz (S/FTP)
- CAT5e 350-MHz (UTP)
- CAT5e 100-MHz (F/UTP)



Top: CAT6 UTP;
Bottom: CAT6A F/UTP

*GigaTrue*³ CAT6A

*GigaTrue*³ CAT6

*GigaBase*³ CAT5e



3-Series Lockable Patch Cables

Premium performance plus lockability.

- Get premium performance for all your network connections.
- LockPORT™-boots provide rock-solid security without having to buy new cables.
- Insert the optional Locking Pin into the patented LockPORT boot to lock down ports.
- Secure network ports from unauthorized access and accidental disconnects.
- Cables stay locked in place—until YOU take them out.
- Guaranteed for life!



Secure network ports—only when you need to.

These one-of-a-kind cables give you the ability to lock down critical network ports—*when you need to*—without buying new patch cords.

Use these high-performance cables for your everyday network connections. Then when you need to secure network ports, you can—in seconds. Just slip an optional Locking Pin into the locking tab on the patented, slimline boot. Now no one can come along and unplug your cable. It stays locked until you decide to release it. To unplug the cable, release the Pin with the Removal Key (sold separately).

Prevent unauthorized access and disconnects.

3-Series cables are ideal for protecting mission-critical network ports from unauthorized access and removal. They're also ideal for preventing accidental disconnects, particularly in industrial and manufacturing applications.

Premium performance.

You won't sacrifice performance for security. These high-performance stranded cables are tested to meet all TIA specs and are guaranteed for life.

Best of all, because these cables cost the same as regular patch cords, you get convenient, rock-solid security within your budget.

NOTE: Specifications on last page.

Rugged, patented, slimline boot.

No one is going to break this boot or pull out your cable!

The extremely rugged, hard-polymer plug and boot are integrated to protect the cable and to prevent tampering. The hard shell also protects the strain-relief and prevents excessive bending and flexing. The snag-free, slimline form fits all standard RJ-45 openings.

The boot's slimline design makes it ideal for high-density applications. It fits all RJ-45 openings.



The hard-polymer boot and plug are integrated for better strength and strain-relief and to prevent tampering.



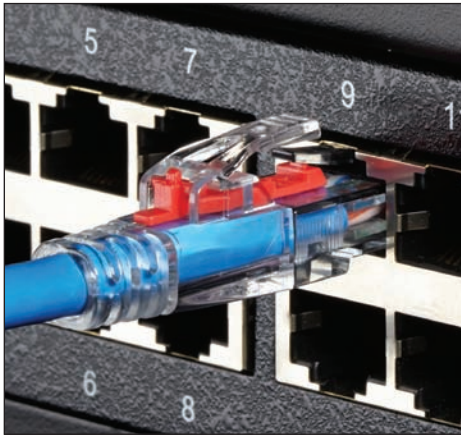
To secure network ports, slip the Locking Pin into the built-in locking tab on the patented boot. Once inserted, it can only be released with the Removal Key.



Ideal for many industries and applications.

- Healthcare
- Education
- Finance/banking
- Transportation
- Government
- Hospitality
- Retail/point-of-sale
- Manufacturing
- Co-location data centers
- Data centers/wiring closets
- Wireless, security, and PoE connections
- Publicly accessible lobbies
- Medical facilities
- Classrooms/conference rooms
- Airports/transportation hubs
- Internet cafes
- Environmental monitoring

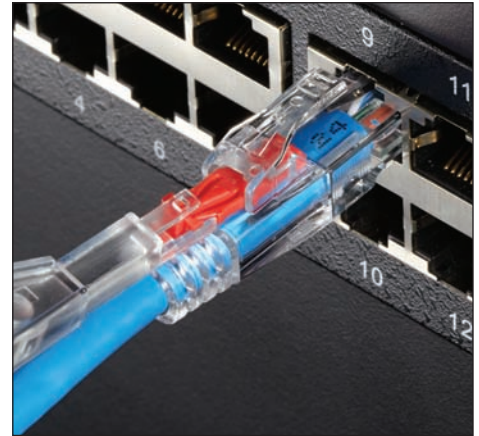




A locked cable with Locking Pin inserted in the boot.



To unlock, insert the Key into the Locking Pin until it clicks.



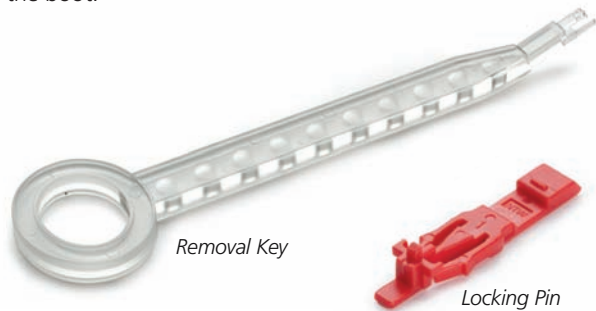
Pull the Locking Pin back and lift the Key to release.

Turn network ports into a layer 1 security key.

3-Series cables are one of the simplest and most effective ways you can increase your Layer 1 security. Use them to protect mission-critical and publicly accessible network ports from unauthorized access and tampering, especially in government offices, conference rooms, lobbies, hotels, airports, event centers, and more.

The lock and key.

The Locking Pin (sold separately) comes in convenient packs of 10 and 25. Keep a bag on hand so you're ready when you need to lock down critical network ports. The Removal Key (sold separately) is constructed of the same hard-polymer as the boot.



Locking Pins	10-Pack	LP50-RD-10PK
	25-Pack	LP50-RD-25PK
Removal Key		KEY-CL

These cables work with:

- GigaTrue CAT6A/6 and GigaBase CAT5e Patch Panels
- GigaTrue2 CAT6 and GigaBase2 CAT5e Jacks
- GigaStation2 Wallplates
- GigaStation2 Surface-Mount Housings

Questions? Contact our FREE Tech Support.

	3-Series Unshielded Lockable Patch Cables		3-Series Shielded Lockable Patch Cables		
Type	CAT6	CAT5e	CAT6A	CAT6	CAT5e
Bandwidth	550-MHz	350-MHz	550-MHz	250-MHz	100-MHz
Shielding	UTP	UTP	F/UTP	Sc/FTP	F/UTP
Base Part #*	C6PC70-	C5EPC70-	C6APC80S-	C6PC70S-	C5EPC70S-
Color	XX				
Blue	BL	•	•	•	•
Black	BK	•	•	•	•
Gray	GY	•	•	•	•
White	WH	•	•	•	•
Red	RD	•	•	•	•
Green	GN	•	•	•	•
Yellow	YL	•	•	•	•
Orange	OR	•	•	•	•
Violet	VT	•	•	•	•
Length	YY				
1 ft.	01	•	•	•	•
2 ft.	02	•	•	•	•
3 ft.	03	•	•	•	•
4 ft.	04	•	•	•	•
5 ft.	05	•	•	•	•
6 ft.	06	•	•	•	•
7 ft.	07	•	•	•	•
10 ft.	10	•	•	•	•
15 ft.	15	•	•	•	•
20 ft.	20	•	•	•	•
25 ft.	25	•	•	•	•
30 ft.	30	•	•	•	•
50 ft.	50	•	•	•	•
100 ft.	100	•	•	•	•
Custom		•	•	•	•

*To construct the part number, combine the fields as follows: **BASE-XX-YY**. For custom cable, add any length to the part number.

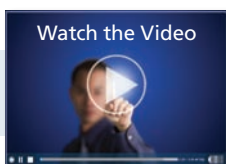
Construction	CAT6A (F/UTP)	CAT6 (UTP)	CAT6 (Sc/FTP)	CAT5e (UTP)	CAT5e (F/UTP)
Conductors	26 AWG stranded copper	24 AWG stranded copper	26 AWG stranded copper	24 AWG stranded copper	26 AWG stranded copper
Diameter	0.235" (5.9 mm)	0.228" (5.8 mm ± 0.2 mm)	0.224" (5.7 mm ± 0.2 mm)	0.220" (5.6 mm ± 0.2 mm)	0.220" (5.6 ± 0.2 mm)
Jacket	PVC CMR	PVC CM	PVC CM	PVC CM	PVC CM
Shielding	Aluminized polyester foil	N/A	Each pair: Aluminum foil wrap with insulation; Overall: Tinned copper braid	N/A	Mylar® tape, Aluminum/Mylar tape
Standards	TIA-568-C.2 Category 6A; E196163-G CMR (UL) c(UL); RoHS	TIA-568-C.2 Category 6; E196163-Y CM (UL) c(UL)	TIA-568-C.2 Category 6; ISO/IEC 11801 Class E; IEC 60332-1-2; EN 50288-5-2; UL E196163-Y	TIA-568-C.2 Category 5e; UL E196163-Y CM (UL, c(UL))	TIA-568-C.2 Category 5e; ISO/IEC 11801 Class D; IEC 60332-1-2; EN 50288-2-2; UL E196163-Y

Electrical Specifications

Capacitance	Pair to ground: 330 pF/100 m	Pair to ground: 330 pF/100 m	Pair to ground: 330 pF/100 m	Pair to ground: 330 pF/100	Pair to ground: 330 pF/100 m
Conductor Resistance	14 Ohm/100 m max.	9.38 ohms/100 m max.	14.07 ohms/100 m max.	9.38 ohms/100 m max.	9.38 ohms/100 m max.
Mutual Capacitance	13.5 pF/ft at 1.0 MHz	5600 pF/100 m max.	5600 pF/100 m max.	5600 pF/100 m max.	5600 pF/100 m max.
Propagation Delay	500 MHz: 536 nS/ 100 m max.	550 MHz: 525.5 nS/ 100 m max.	250 MHz: 546 nS/100 m max.	350 MHz: 525.9 nS/ 100 m max.	100 MHz: 548nS/ 100 m max.
DC Resistance	14.0 ohms/100 m max.	5% max.	5% max.	5% max.	5% max.
Delay Skew	< 25 ns	1–10 MHz; 40±10 nS/100 m.	1–250 MHz: 45±10 nS/100 m	1–10 MHz; 40±10 nS/100 m	1–10 MHz; 40±10 nS/100 m
Impedance	100 ± 20 ohms at 1–650 MHz	100 ± 15 ohms at 1–550 MHz	100 ± 15 ohms at 1–250 MHz	100 ± 15 ohms at 1–350 MHz	100 ± 15 ohms at 1–100 MHz

Transmission Performance (dB/100m)

ACRF (EL-FEXT)	27.8 dB at 100 MHz; 13.8 dB at 500 MHz; 11.5 at 650 MHz	27.8 dB at 100 MHz; 16.9 dB at 350 MHz; 12.9 dB at 550 MHz	23.3 dB/100 m at 100 MHz; 15.3 dB/100 m at 250 MHz	23.8 dB at 100 MHz; 12.9 dB at 350 MHz	17.4 dB at 100 MHz
Insertion Loss	28.7 dB at 100 MHz; 67.9 dB at 500 MHz; 78.5 dB at 650 MHz	19.8 dB at 100 MHz; 39.7 dB at 350 MHz; 51.7 dB at 550 MHz	21.3 dB at 100 MHz; 35 dB at 250 MHz	22 dB at 100 MHz; 45.7 dB at 350 MHz	24 dB at 100 MHz
NEXT	44.3 dB at 100 MHz; 33.8 dB at 500 MHz; 3 2.1 dB at 650 MHz	44.3 dB at 100 MHz; 36.1 dB at 350 MHz; 33.2 dB at 550 MHz	39.9 dB at 100 MHz; 33.1 dB at 250 MHz	35.3 dB at 100 MHz; 27.1 dB at 350 MHz	30.1 dB at 100 MHz
PS-NEXT	42.3 dB at 100 MHz; 31.8 dB at 500 MHz; 30.1 dB at 650 MHz	42.3 dB at 100 MHz; 34.1 dB at 350 MHz; 31.2 dB at 550 MHz	37.1 dB at 100 MHz; 30.2 dB at 250 MHz	32.3 dB at 100 MHz; 24.1 dB at 350 MHz	27.1 dB at 100 MHz
PS-ACRF	24.8 dB at 100 MHz; 10.8 dB at 500 MHz; 8.5 dB at 650 MHz	24.8 dB at 100 MHz; 13.9 dB at 350 MHz; 9.9 dB at 550 MHz	20.3 dB at 100 MHz; 12.3 at 250 MHz	20.8 dB at 100 MHz; 9.9 dB at 350 MHz	14.4 dB at 100 MHz
Return Loss	19 dB at 100 MHz; 13 dB at 500 MHz; 12 dB at 650 MHz	19.0 dB at 100 MHz; 14.3 dB at 350 MHz; 12.6 dB at 550 MHz	12.0 dB at 100 MHz; 8.0 dB at 250 MHz	20.1 dB at 100 MHz; 16.3 dB at 100 MHz	10 dB at 100 MHz



3-Series Lockable Patch Cables
blackbox.com/3Series

These cables work with all standard jacks and other RJ-45 hardware.
 Questions? Contact our FREE Tech Support at 724-746-5500 or go to blackbox.com.

© Copyright 2013. Black Box Corporation. All rights reserved. Printed in U.S.A. Black Box® and the Double Diamond logo are registered trademarks, and GigaBase, GigaTrue, and LockPORT are trademarks, of BB Technologies, Inc. Any third-party trademarks appearing in this publication are acknowledged to be the property of their respective owners.

BR00115-Giga3SeriesCable_v1