

Power to see
things differently



With the

EOS 650D



Canon



EOS 650D

Brilliance made easy

Intelligent thinking

Start your journey with the innovative EOS 650D, a powerful 18.0 MP camera with DIGIC 5 technology that inspires creativity and lets you capture great photographs and Full HD movies with ease.

Creative movies shot simply

Make your own EOS Movie in Full HD, thanks to the EOS 650D's fully featured Movie function. Shooting like an expert has never been easier thanks to continuous AF and editable Video snapshot modes.

A system like no other

With the EOS 650D you have access to the expansive EOS system, developed from over 25 years continuous advancement and providing you with the ultimate choice of lenses, flashguns and accessories.

Tv (Shutter Speed): 1/250

Av (Aperture Value): f/8.0

ISO Speed: 100

Lens: EF-S10-22mm f/3.5-4.5 USM

Focal length: 16.0mm

Image shot using wide angle to put the subject in context with their environment and provide sharp detail in both subject and background.

Your world is our vision

EOS 650D is your first step towards a world of creative adventure and fun. With a host of special features, it blends technology with ease-of-use and is the number one choice for the entry-level user.

Tv (Shutter Speed): 2.5
 Av (Aperture Value): f/5.0
 ISO Speed: 100
 Lens: EF-S10-22 f/3.5-4.5 USM
 Focal length: 14.0mm
 CMOS technology enables stunning low-light shooting capability.

DIGIC 5

Superior processing power

Rich colours and smooth tonal gradation with fine detail, the EOS 650D has the new DIGIC 5 14-bit processor at its heart, which works with you to optimise all settings and Modes, delivering stunning images with reduced noise in all light levels, even at night.

18.0 MEGA PIXELS
 CMOS

18-megapixel resolution

Thanks to an 18.0 Megapixel sensor, the EOS 650D captures images in stunning high resolution at a maximum size of 5184 x 3456 pixels. Print poster sized images, or crop to make new compositions with abundant detail.



Original image

Image showing cropped layout



Cropped image

63 ZONE

Dual-Layer Metering

Advanced metering

A state-of-the-art exposure metering system analyses each scene over 63 separate zones. Light intensity and colour information plus data from the camera's lens and focus points are also used to help calculate the optimum exposure in all lighting conditions.



Advanced metering

ISO

12800
 6400

CMOS sensor technology

Only Canon designs, develops and manufactures all its own sensors, which means quality is guaranteed at every production stage. With advanced metering and stunning low-light capability up to an incredible ISO 12800, the EOS 650D can handle difficult shooting scenarios with ease, in many cases eliminating the need for a flash or tripod.

Its highly sensitive CMOS sensor can be expanded to ISO 25600 enabling you to push its performance even further in low light.



ISO 200



ISO 3200



ISO 800



ISO 12800

Up to **5.0**

Frames Per Sec

Capture the action

Football and other fast-paced sports require the very best performance from a camera. Rapid action is recorded in full resolution thanks to a continuous 5fps, which means you will never miss that critical moment.



The creative touch



Vari-angle 7.7cm (3.0") 3:2 ratio Clear View LCD II Touch

Understanding the EOS 650D is made even easier thanks to a highly intuitive screen with 1,040,000 dots.

A first on any Canon DSLR, touch screen technology offers control over viewing images and movies with pinch to zoom, plus control camera settings and even fire the shutter with a touch of the screen.

The LCD can be angled and tilted for any shooting situation and performs well even in bright sunlight meaning you can always see what's going on. Focus and compose using all of the screen's display, safe in the knowledge that the aspect ratio is the same as the captured image.

Touch Screen technology, a first for EOS

Hybrid CMOS AF

Four ways to focus – better, faster AF

The EOS 650D boasts superior autofocus performance with nine cross-type focus points, allowing you to create sharply focused pictures with confidence – even in the trickiest situations. There are four ways to focus, from Face Detection and Tracking, FlexiZone and FlexiZone Multi (which allows you to select one of nine zones on the LCD), to Quick mode that lets you change the focus point by touching the LCD and dragging the highlighted square to where you want the lens to focus.



Autofocus points Examples



Tv (Shutter Speed): 1/200
Av (Aperture Value): f/8.0
ISO Speed: 100
Lens: EF-S10-22 f/3.5-4.5 USM
Focal length: 10.0mm
The vari-angle LCD screen provides access to alternative shooting angles.



Vari-angle LCD

Vari-angle screen

The LCD screen is articulated and rotates through 270 degrees, making it easy to get great shots from low or high angles. Clear View II technology enables the screen to perform better in direct sunlight making Live View composition a pleasure.



Movies made easy

Tv (Shutter Speed): 1/250
Av (Aperture Value): f/8.0
ISO Speed: 100
Lens: EF-S10-22 f/3.5-4.5 USM
Focal length: 10.0mm
Great still images and video from the same camera.



Full HD quality

Creative movie making is made even easier on the EOS 650D thanks to high-speed autofocus, on-screen editing and full stereo sound. Canon's advances in Full HD Movies means the joy of creating a movie is exciting and easy to achieve.



AF in movies

Faster and more accurate continuous focus in Movie mode allows you to keep sharp focus throughout the duration of your recording. Combined with the new EF-S 18-135mm f/3.5-5.6 IS STM lens your Movies will always be sharply focused during recording.



Video Snapshot

Video snapshot

Enhance your Movie footage with Video Snapshot. Shoot a series of short videos up to eight seconds in length, edit them and play the album as a video slideshow in one movie file. The EOS 650D makes this easy and fun and the results give your movies pace and excitement with the look and feel of professionally edited footage.



To find out more about this exciting new product, view the EOS 650D Video here:
www.canon-europe.com/650D

Scene Intelligent Auto takes the guesswork out of creating the perfect image.



Scene Intelligent Auto

Choose Scene Intelligent Auto and with the powerful DIGIC 5 processor at work, each scene is analysed for the presence of movement, faces (in Live View), lighting, contrast and colour. Even the EOS 650D's Auto Lighting Optimiser is fine-tuned according to dynamic range, so that highlights and shadows are recorded and reproduced perfectly.

Intelligent thinking for any scene



Shot with Scene Intelligent Auto

Nature and Outdoors
The saturation of the blue sky is increased to create a vivid image.



Vivid Colours
For highly saturated subjects a suitable correction is applied without diluting the saturation.



Portrait
The facial tones look more natural. The image is adjusted to obtain the correct brightness of the face.



Tv (Shutter Speed): 1/100
Av (Aperture Value): f/5.6
ISO Speed: 100
Lens: EF-S18-200 f/3.5-5.6 IS
Focal length: 60.0mm
The saturation of a sunset scene is increased so the sunset looks vivid.



Define your creative style

Intelligently designed and packed full of features, the EOS 650D brings creative effects to the fore, putting you in control.



Creative Filters

Creative filters to enhance and inspire

Creative filters bring a world of possibilities to your fingertips, and with EOS 650D you can choose from any one of seven filters to enhance and add extra drama and effects to your chosen image.



Original



Art bold effect



Fish-eye effect



Grainy B/W



Toy camera effect



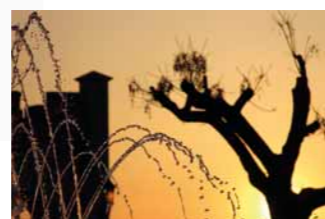
Soft focus



Water painting effect



Miniature effect



With Handheld Night Scene



Without Handheld Night Scene



Handheld Night Scene

Selecting the Handheld Night Scene mode allows the EOS 650D to shoot a series of pictures in very low light at a fast enough shutter speed to prevent camera shake, blending them together to create one stunning result, eliminating the need for a tripod.



Tv (Shutter Speed): 1/15
Av (Aperture Value): f/6.3
ISO Speed: 400
Lens: EF-S10-22mm f/3.5-4.5 USM
Focal length: 10.0mm
Control off-camera flash with an Integrated Speedlite Transmitter.



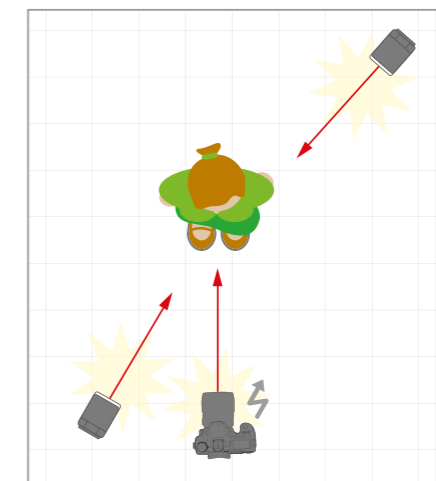
Integrated Speedlite TRANSMITTER

Lighting effects made easy

Get creative with off-camera flash thanks to the EOS 650D's Integrated Speedlite Transmitter, which allows you to add additional Speedlite flashguns triggered remotely by the camera with no need for any cables or complications.

Position another compatible Speedlite to one side for dramatic side lighting or use more than one flash placed in different areas to light subject and background independently.

Shooting with Integrated Speedlite Transmitter



Flash setup



Resulting image

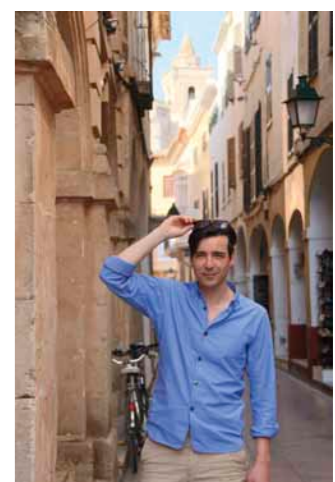
HDR Backlight Control

Select direct from the Mode dial and shoot images with HDR Backlight Control for stunning results in backlit conditions. With the power of the DIGIC 5 processor, three continuous shots at different exposures are taken. The shots are under, correctly and over exposed and then combined to create an image having minimal loss of highlight detail and shadow detail – even in backlit conditions.



HDR Overexposed

HDR Underexposed



HDR combined

Introducing the extensive EOS System



A system for any occasion

For over 25 years the EOS system has been one of the most successful camera systems in the world. The range comprises over 60 EF and EF-S lenses plus a range of fully dedicated flashguns. The EOS 650D features an Integrated Speedlite Transmitter enabling the remote operation of a Speedlite flash off the camera for additional creative lighting effects.



Landscape and travel

EF-S 10-22mm f/3.5-4.5 USM

This ultra wide-angle lens is ideal to show the power of a dramatic landscape, or the detail of exquisite architecture interiors.



Macro

EF-S 60mm f/2.8 Macro USM

Focus within 20cm and fill your frame with stunning detail.



Portrait

EF 50mm f/1.4 USM
EF-S 17-55mm f/2.8 IS USM

Two classic lenses capable of great natural portraits in low light thanks to fast maximum apertures.



Wildlife / Long Lens Shooting

EF-S 55-250mm f/4-5.6 IS II
EF-S 18-200mm f/3.5-5.6 IS

Zoom in on details or pull distant subjects closer and let the Image Stabilizer reduce the risk of camera shake.



With a EOS 650D at your side, you have access to the extensive EOS system of lens and flash accessories designed to work seamlessly with your camera.

Tv (Shutter Speed): 1/100
Av (Aperture Value): f/5.6
ISO Speed: 100
Lens: EF-S18-200 f/3.5-5.6 IS
Focal length: 200.0mm
Long lens shooting made easy with Image Stabilisation.

Digital Photo Professional and EOS Solution software

Supplied with every Canon EOS camera, Digital Photo Professional (DPP) is professional imaging software for viewing, editing and processing RAW and JPEG files. Its intuitive interface allows photographers to adjust images for exposure, colour saturation and contrast as well as apply settings such as white balance and sharpening retrospectively.

Also included on the EOS Solution disk are other applications that add new functionality to your EOS camera. ImageBrowser EX (Mac and PC) offers simple download and image browsing, while EOS Utility provides remote and tethered shooting facilities. Picture Style Editor lets photographers create and edit their own picture styles and upload them to their cameras.

Canon Photographic Printing

Canon's range of PIXMA inkjet printers allow EOS photographers to make fine-art quality prints at home. Tiny ink-droplet sizes deliver remarkable image quality and phenomenal levels of detail in borderless print up to A3+ in size. Canon SELPHY dye-sublimation printers offer the speed and affordability of a high-street minilab in a compact, easy-to-use form.



To find out more go to:
www.canon-europe.com/PIXMA_MG8250

Digital Photo Professional

EOS 650D

Specifications: EOS 650D

IMAGE SENSOR	Type Effective Pixels Total Pixels Aspect Ratio Low-Pass Filter Sensor Cleaning Colour Filter Type	22.3 x 14.9mm CMOS Approx. 18.0 megapixels Approx. 18.5 megapixels 3:2 Built-in/Fixed EOS integrated cleaning system Primary Colour
IMAGE PROCESSOR	Type	DIGIC 5
LENS	Lens Mount Focal Length	EF/EF-S Equivalent to 1.6x the focal length of the lens
FOCUSING	Type AF System/ Points AF working range AF Modes AF Point Selection Selected AF point display Predictive AF (AF) AF Lock AF Assist Beam Manual Focus	TTL secondary image forming, phase difference detection with AF dedicated CMOS sensor 9 cross-type AF points (f/2.8 at centre) EV -0.5 -18 (at 23°C & ISO100) AI Focus One Shot AI Servo Automatic selection, Manual selection Superimposed in viewfinder and indicated on LCD monitor Yes, up to 10m Locked when shutter button is pressed half way Intermittent firing of built-in flash or emitted by optional dedicated Speedlite Selected on lens Yes, up to 10m Locked when shutter button is pressed half way Intermittent firing of built-in flash or emitted by optional dedicated Speedlite Selected on lens
EXPOSURE CONTROL	Metering modes Metering Range AE Lock Exposure Compensation AEB ISO Sensitivity (ISO)	TTL full aperture metering with 63-zone SPC (1) Evaluative metering (linked to all AF points) (2) Partial metering at center (approx. 9% of viewfinder) (3) Spot metering (approx. 4% of viewfinder at center) (4) Center weighted average metering EV 1-20 (at 23°C with 50mm f/1.4 lens ISO100) Auto: In One-shot AF mode with evaluative metering exposure is locked when focus is achieved. Manual: By AE lock button in creative zone modes. +/-5 EV in 1/3 or 1/2 stop increments (can be combined with AEB). 3 shots +/- 2 EV, 1/2 or 1/3-stop increments AUTO(100-6400), 100-12800 in 1-stop increments ISO can be expandable to H: 25600
SHUTTER	Type Speed	Electronically-controlled focal-plane shutter 30-1/4000 sec (1/2 or 1/3 stop increments), Bulb (Total shutter speed range. Available range varies by shooting mode)
WHITE BALANCE	Type Settings Custom White Balance WB Bracketing	Auto white balance with the imaging sensor AWB, Daylight, Shade, Cloudy, Tungsten, White Fluorescent light, Flash, Custom. White balance compensation: 1. Blue/Amber +/-9 2. Magenta/ Green +/-9. Yes, 1 setting can be registered +/-3 levels in single level increments 3 bracketed images per shutter release. Selectable Blue/Amber bias or Magenta/ Green bias.
VIEWFINDER	Type Coverage (Vertical/Horizontal) Magnification Eyepoint Dioptr Correction Focusing Screen Mirror Viewfinder Information Depth of field preview Eyepiece shutter	Pentamirror Approx. 95% Approx. 0.85x (4) Approx. 19mm (from eyepiece lens centre) -3 to +1 m-1 (dioptr) Fixed Quick-return half mirror (Transmission: reflection ratio of 40:60, no mirror cut-off with EF600mm f/4 or shorter) AF information: AF points, focus confirmation light Exposure information: Shutter speed, aperture value, ISO speed (always displayed), AE lock, exposure level/compensation, spot metering circle, exposure warning, AEB Flash information: Flash ready, high-speed sync, FE lock, flash exposure compensation, red-eye reduction light Image information: Highlight tone priority (D+), monochrome shooting, maximum burst (1 digit display), White balance correction, SD card information Yes, with Depth of Field preview button. On strap
LCD MONITOR	Type Coverage Viewing Angle (horizontally/vertically) Coating Brightness Adjustment Display Options	Touch screen vari angle 7.7cm (3.0") 3:2 Clear View II TFT, approx. 1040k dots Approx. 100% Approx 170° Anti smudge Adjustable to one of seven levels (1) Quick Control Screen (2) Camera settings

FLASH	Built-in Flash GN (ISO 100, meters) Built-in Flash Coverage Built-in Flash recycle time Modes Red-Eye Reduction X-sync Flash Exposure Compensation Flash Exposure Bracketing Flash Exposure Lock Second Curtain Synchronisation HotShoe/ PC terminal External Flash Compatibility External Flash Control	13 up to 17mm focal length (35mm equivalent: 28mm) Approx. 3 seconds Auto, Manual flash, Integrated Speedlite Transmitter Yes - with red eye reduction lamp 1/200sec +/- 2EV in 1/2 or 1/3 increments Yes, with compatible External Flash Yes Yes Yes/ No E-TTL II with EX series Speedlites, wireless multi-flash support via camera menu screen
SHOOTING	Modes Picture Styles Colour Space Image Processing	Scene Intelligent Auto, No Flash, Creative Auto, Portrait, Landscape, Close-up, Sports, Night Portrait, Handheld Night Scene, HDR Backlight Control, Program AE, Shutter priority AE, Aperture priority AE, Manual Auto, Standard, Portrait, Landscape, Neutral, Faithful, Monochrome, User Defined (x3) sRGB and Adobe RGB Highlight Tone Priority Auto Lighting Optimizer (4 settings) Long exposure noise reduction High ISO speed noise reduction (4 settings) Multi Shot Noise Reduction Auto Correction of Lens Peripheral Illumination Basic+ (Shoot by ambient selection, Shoot by lighting or scene type) Creative filters (Art Bold, Water painting, Grainy B/W, Soft focus, Toy camera, Miniature effect, Fish-eye) - during image Playback only Single, Continuous, Self timer (2s, 10s+remote, 10s + continuous shots 2-10) Max. Approx. 5fps for approx. 22 JPEG images ⁽¹⁾ , 6 images RAW ⁽¹⁾⁽²⁾
LIVE VIEW MODE	Type Coverage Frame Rate Focusing Metering Display Options	Electronic viewfinder with image sensor Approx. 99% (horizontally and vertically) 30 fps Manual Focus (Magnify the image 5x or 10x at any point on screen) Autofocus: Hybrid CMOS AF (Face detection and Tracking AF, FlexiZone-Multi, FlexiZone-Single), Phase detection AF (Quick mode) Real-time evaluative metering with image sensor. Evaluate metering, partial metering, spot metering, center-weighted average metering. Grid overlay, Histogram
FILE TYPE	Still Image Type RAW+JPEG simultaneous recording Image Size Movie Type Movie Size Movie Length Folders File Numbering	JPEG: Fine, Normal (Exif 2.30 compliant) / Design rule for Camera File system (2.0), RAW: RAW (14bit, Canon original RAW 2nd edition), Digital Print Order Format [DPOF] Version 1.1 compliant Yes, RAW + Large JPEG JPEG 3:2: (L) 5184x3456, (M) 3456x2304, (S) 2592x1728, (S2) 1920x1280, (S3) 720x400 JPEG 4:3: (L) 4608x3456, (M) 3072x2304, (S1) 2304x1728, (S2) 1696x1280, (S3) 640x480 JPEG 16:9: (L) 5184x2912, (M) 3456x1944, (S1) 2592x1456 (S2) 1920x1080, (S3) 720x400 JPEG 1:1: (L) 3456x3456, (M) 2304x2304, (S1) 1728x1728, (S2) 1280x1280, (S3) 480x480 RAW: (RAW) 5184x3456, (M-RAW) 3888x2592, (S-RAW) 2592x1728 MOV (Video): H.264, Sound: Linear PCM, recording level can be manually adjusted by user) 1920 x 1080 (29.97, 25, 23.976 fps) 1280 x 720 (59.94, 50 fps) 640 x 480 (30, 25 fps) Max duration 29min 59sec, Max file size 4GB New folders can be manually created and selected (1) Consecutive numbering (2) Auto reset (3) Manual reset
OTHER FEATURES	Custom Functions Metadata Tag Intelligent Orientation Sensor Playback zoom Display Formats Slide Show	8 Custom Functions with 34 settings User copyright information (can be set in camera) Image rating (0-5 stars) No 1.5x - 10x enabled in 15steps (1) Single image with information (2 levels) (2) Single image (3) 4 image index (4) 9 image index (5) Jump Display Image selection: All images, by Date, by Folder, Movies, Stills Playback time: 1/2/3/5 seconds Repeat: On/Off

Histogram Highlight Alert Image Erase/Protection Menu Categories Menu Languages Firmware Update	Brightness: Yes RGB: Yes Yes Erase: Single image, All images in folder, Checkmarked images, unprotected images Protection: Erase protection of one image at a time (1) Shooting menu (x5) (2) Playback menu (x2) (3) Setup menu (x3) (4) Custom Functions menu (5) My Menu 25 Languages English, German, French, Dutch, Danish, Portuguese, Finnish, Italian, Norwegian, Swedish, Spanish, Greek, Russian, Polish, Czech, Hungarian, Romanian, Ukrainian, Turkish, Arabic, Thai, Simplified Chinese, Traditional Chinese, Korean and Japanese Update possible by the user.	
INTERFACE	Computer Other	Hi-Speed USB Video output (PAL/ NTSC) (integrated with USB terminal), HDMI mini output (HDMI-CEC compatible), External microphone (3.5mm Stereo mini jack)
DIRECT PRINT	Canon Printers PictBridge	Canon Compact Photo Printers and PIXMA Printers supporting PictBridge Yes
STORAGE	Type	Type SD, SDHC or SDXC (UHS-I) card
SUPPORTED OPERATING SYSTEM	PC & Macintosh	Windows XP inc SP3 / Vista inc SP1 and SP2 (excl. Starter Edition) / 7 (excl. Starter Edition) OS X v10.6-10.7 (Intel processor required)
SOFTWARE	Browsing & Printing Image Processing Other	ImageBrowser EX Digital Photo Professional PhotoStitch, EOS Utility (inc. Remote Capture), Picture Style Editor
POWER SOURCE	Batteries Battery life Battery Indicator Power saving Power Supply & Battery Chargers	1 x Rechargeable Li-Ion Battery LP-E8 Approx. 440 (at 23°C, AE 50%, FE 50%) ⁽¹⁾ Approx. 400 (at 0°C, AE 50%, FE 50%) 4 levels Power turns off after 30sec or 1, 2, 4, 8 or 15mins. AC Adapter Kit ACK-E8, Battery charger LC-E8, LC-E8E
PHYSICAL SPECIFICATIONS	Body Materials Operating Environment Dimensions (WxHxD) Weight (body only)	Stainless Steel and polycarbonate resin with glass fiber 0 - 40°C, 85% or less humidity 133.1 x 99.8 x 78.8 mm Approx. 575g (CIPA testing standard, including battery and memory card)
ACCESSORIES	Viewfinder Wireless File Transmitter Case Lenses Flash Battery Grip Remote Controller/ Switch Other	Eyecup Ef, E-series Dioptic Adjustment Lens with Rubber Frame Ef, Eyepiece Extender EP-EX15II, Angle Finder C Semi-Hard Case EH22-L Compatible with Eye-Fi cards All EF and EF-S lenses Canon Speedlites (220EX, 270EX, 270EX II, 320EX, 420EX, 430EX, 430EX II, 550EX, 580EX, 580EX II, 600EX, 600EX-RT, Macro-Ring-Lite, MR-14EX, Macro Twin Lite MT-24EX, Speedlite Transmitter ST-E2, Speedlite Transmitter ST-E3-RT) BG-E8 Remote Switch RS-60E3, Remote Controller RC-6 Hand Strap E2
All data is based on Canon standard testing methods except where indicated. Subject to change without notice.		
1 Large/Fine(Quality 8) resolution 2 Based on Canon's testing conditions, JPEG, ISO 100, Standard Picture Style. Varies depending on the subject, memory card brand and capacity, image recording quality, ISO speed, drive mode, Picture Style, Custom functions etc. 3 Compatible with large memory card capacities, including cards of 2GB and more (camera may require firmware update). 4 With 50mm lens at infinity, -1m ⁻¹ dpt 5 Based on the CIPA Standard and using the batteries and memory card format supplied with the camera, except where indicated 6 Memory card and battery door only 7 With EF300mm f/2.8L IS USM at 50kph 8 Recommended Exposure Index 9 Environmental protection 10 Maximum fps and buffer capacity may be reduced depending on the camera settings and light level 11 Peripheral Cross type AF points will not function as a cross type AF points with the following lenses: EF 35-80mm f4.5-5.6 (II/III/USM), EF35-105mm f4.5-5.6 (USM), EF 80-200mm f4.5-5.6 (II)		
Some images are simulated for clarity of reproduction. All company and/or product names are trademarks and/or registered trademarks or their respective manufacturers in their markets and/or countries		

Canon Inc.
canon.com

Canon Europe
canon-europe.com

English Edition
© Canon Europa N.V., 2012

Canon Europe Ltd
3 The Square, Stockley Park
Uxbridge, Middlesex
UB11 1ET, UK

