

Digital HD video capture option now available.

The award-winning digital signage solution for SMBs!

**Increase sales.**

» Upsell, cross-sell, merchandise, advertise.

**Improve communications.**

» Inform, educate, notify, alert.

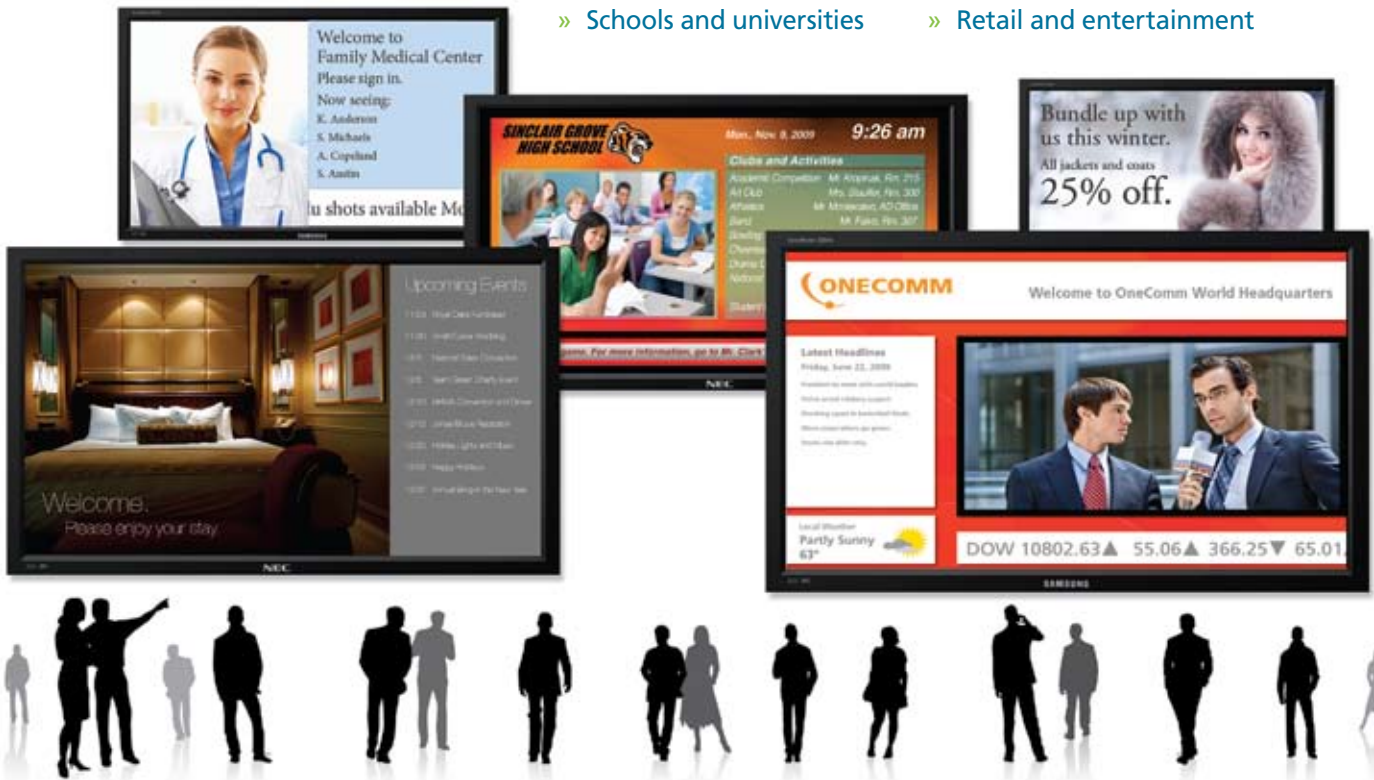
Do it all with iCOMPEL™ from Black Box.



# Digital Signage: Grab Their Attention

It's the ideal solution for:

- » Corporate campuses
- » Government offices
- » Schools and universities
- » Healthcare
- » Hotels and restaurants
- » Retail and entertainment



## Digital signage: why you should get it.

No other medium makes it possible to deliver compelling content at the right location at the right time for maximum impact. It works whether your goal is to:

- Increase sales and profits.
- Inform, educate, notify, or alert.
- Encourage certain behavior.
- Satisfy customers or employees.
- Improve business processes.
- Or all the above.

People on the go often overlook or ignore posters, flyers, and other traditional printed signage. Strengthen your marketing, as well as your internal communications, by replacing boring static signage with eye-catching digital signage in lobbies, waiting rooms, or any place frequented by your target audience.

## Digital signage: how the flexibility benefits you.

With today's digital signage technologies, you can:

- Upsell, cross-sell, merchandise, advertise.
- Create welcome messaging, menu boards, and wayfinding screens.
- Share information faster, including meeting announcements, schedules, event times, and public health information.
- Improve the in-store experience for customers, and create dynamic product and service promotions.
- Use existing content to create compelling messaging.
- Integrate live video and Internet feeds like stock and news tickers, and other XML or RSS feeds so you're not forced to create and supply all the signage content by yourself.
- Use all sorts of media, including PowerPoint, static images, stored and live video, and audio file formats.
- Update content on the fly from any computer with an Internet connection.

## Digital signage: now much more affordable.

Digital signage is more affordable and easier to implement than ever before. Out-of-the-box solutions cost as little as \$1000. Even small businesses can afford and benefit from digital signage.

Plus, you can:

- Benefit from a choice of content-layout tools and ready-made layouts, empowering you to create truly professional-looking presentations—without adding creative and technical staff!
- Get up and running with minimal training.
- Easily deploy and manage your digital signage from any browser-based connection.
- Get most or all of what you need upfront, so you're not nickle-and-dimed year after year with ongoing licensing or SaaS fees.
- Integrate it into an existing IT network without having to replace existing equipment, set up a separate operating architecture, or buy extra PCs.

## Digital signage: how to get started.

We know choosing a digital signage solution can be an overwhelming task. You may even find yourself suffering from decision paralysis.

### Simplify the decision-making.

**Simplify** by going with an out-of-the-box solution that gives you *everything* you need: flexibility, affordability, and the ability to get your digital signage up and running fast—without having to navigate a sea of technical and broadcasting jargon.

**Simplify with Black Box's iCOMPEL™.** This family of digital signage appliances turns any user—the average office manager, a business owner, an IT technician, or an integrator—into a multimedia pro. If you still need help, call Black Box for FREE 24/7 Tech Support.

Loaded with features, the iCOMPEL enables you to play recorded or streaming content, manage it from a network, and automate content playing for 24/7 customer engagement.

Set up vibrant, real-time displays with this easy-to-use digital signage platform!



Front view: 2U iCOMPEL



- » **FREE** firmware and software upgrades.
- » **No** recurring licensing fees. Very low cost of ownership.
- » **True** plug-and-display technology—sets up **FAST**.
- » **FREE**, unparalleled, 24/7 technical support from a respected industry leader in both AV and IT solutions.



Create, distribute, and manage digital signage content easily with iCOMPEL digital signage network appliances from Black Box.

Ideal for both large and small businesses, iCOMPEL appliances work right out of the box with all software preinstalled—and no recurring licensing or SaaS fees to deal with later. And software updates are always free.

### Why iCOMPEL?

- » Affordable and scalable from one to many displays
- » A one-time investment
- » Keeps digital signage simple
- » No learning curve to overcome; easy for beginners to master
- » Easy to integrate; won't cause IT and security headaches
- » It's from an industry leader who can supply you with everything you need for an end-to-end digital signage system—saving you both time and money!

Because the iCOMPEL units support many media formats, you can combine video with scrolling text, photos, Flash, and Web content. In addition to HTML and RSS media, they handle MPEG, AVI, QuickTime®, and PowerPoint® media\*; JPEG, GIF, and TIFF images; and WAV and MP3 audio.

You can also order iCOMPEL versions with a built-in video capture card for connection to set-top boxes or other TV, CATV, or DTV sources. These are ideal for applications where you need to display both stored video and live video—even side by side in zones within the same screen!

We also offer versions for Wi-Fi connectivity and standalone kiosk and interactive kiosk applications, plus pluggable players for sliding into a screen's Intel® OPS slot

Install the iCOMPEL appliances on your network and manage them via any Web browser. One iCOMPEL Publisher can send media over the network to an iCOMPEL Subscriber—even on the other side of the world.

Scaling from a standalone installation to a multichannel network with many screens is simply a matter of adding more iCOMPEL units to your IT network (although, in some applications, you may want to also use an iCOMPEL Deployment Manager [iDM]; for details, see [blackbox.com](http://blackbox.com)).

Setup is easy. Just connect iCOMPEL to your network and to an LCD or other display device, power it up, and once it has an IP address from the network, you can use a browser to access the network appliance via a DHCP server. Fixed IP addresses can also be set. (For sample applications, see [pages 6–7](#).)

\* **NOTE:** PowerPoint media is a slideshow saved as a .wmv file.

### iCOMPEL appliances:

- » Are complete, all-in-one, plug-and-play devices.
- » Work right out of the box with all software preinstalled and tested.
- » Available as publisher, subscriber, and standalone players. You can set up multiple units as subscribers for a publisher unit.
- » Can be controlled via a standard Web browser.
- » Enable you to update screen content from any PC or Mac with an Internet connection to issue alerts or customize content for specific audiences.
- » Can play recorded videos, as well as live video from TV sources (on the TV and HD video capture versions).
- » Feature drag-and-drop tools to manipulate layouts easily.
- » Include **FREE** professionally designed screen layouts and **FREE** software updates—no costly add-ons to buy later!
- » Enable you to set up multizone layouts with each zone playing different media from its own playlist.
- » Use store-and-forward type of media distribution, so they don't compromise network bandwidth or resources.
- » Support 802.11n wireless connectivity as an option.

### Key functions performed:

- » Content management
- » Content scheduling
- » Content distribution
- » Playing of:
  - stored media
  - recorded video and even live video (on -VID models)
  - local user "ad hoc" inputs
- » System monitoring

# iCOMPEL: Sample Screen Layouts



## Corporate office

In a lobby or reception area, digital signage strengthens communications for businesses large and small. iCOMPEL enables you to easily stream images and scrolling or static text into displays. And because they're widely

compatible with many types of media—including HTML, PowerPoint®, Flash, MPEG, and QuickTime® as well as AVI, JPEG, and GIF files—there's no need to create and reformat existing media for uploading to the system!



## School

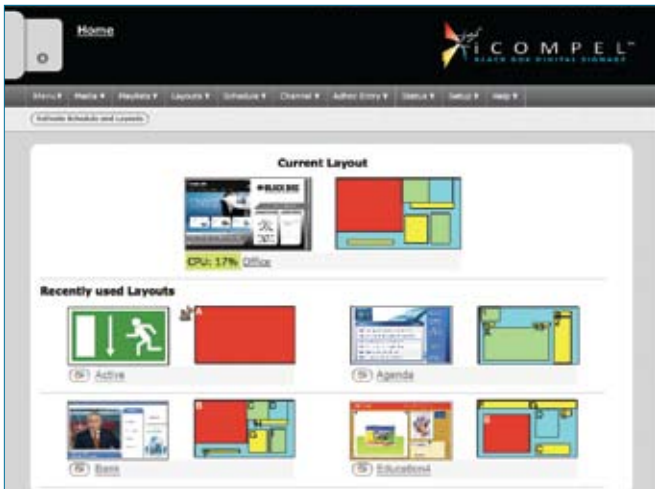
Used in a K–12 or higher-ed environment, iCOMPEL gives you a simple-to-integrate platform for informing, alerting, and notifying students and staff in your buildings or on your campus. With iCOMPEL, it's easy to build eye-

catching signage and stream content from your school Web site, a campus TV studio, a central administration office, and your AV and IT departments—without adding any technical or creative staff.

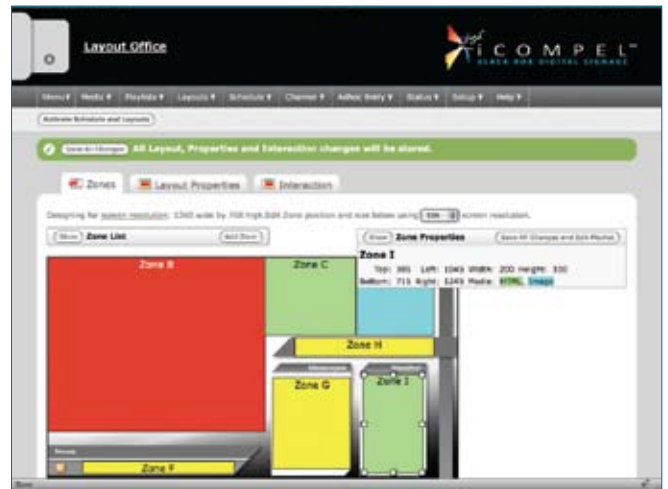
## Healthcare

Hospitals, clinics, and doctors' offices can use iCOMPEL to communicate more effectively with patients, visitors, and staff. The preloaded, easy-to-use design software enables the average office manager or PR specialist to quickly set up a messaging system in lobbies, waiting rooms, and cafeterias to broadcast announcements, menus, bulletins, and other time-sensitive information. Devote an area of the screen to promoting upcoming wellness clinics, professional development seminars, and other events. And because it's Web manageable, community relations staff and other administrators have a simple, cost-effective way to upload and distribute media for viewing in facilities across a large medical system.





Includes FREE layouts. Customize them how you like!



Resize and position items in precise increments or click and drag. Overlap and make zones transparent. iCOMPEL supports unlimited zones for text or still images, up to 15 zones for HTML, and either two or four zones for video (depending on the series ordered).

## Sophisticated layout tools.

The software that comes preloaded on the publisher and player units includes a number of free layouts, so you can be up and running, displaying your choice of content in a professionally designed format fast.

Or you can create your own. The intuitive layout and design tool makes it easy. Adjust, resize, position, and layer zones with a simple click and drag!

Also, you can manually set pixel or percentage measurements to achieve pixel-accurate alignment or lock a movie zone to a desired aspect ratio (16:9, 5:4, or 4:3).

Set up one or more screen layouts containing one or more rectangular zones for display, either in a portrait or landscape screen configuration. Every zone in the display layout has its own playlist to which you can add multiple stored media files.

You also get the flexibility to format text so it's consistent with the look and feel of your business' branding. That's because the iCOMPEL supports importing custom fonts. You can set their style, weight, and color, as well as control their scroll speed across the screen.

## Schedule playlists for different times of the day.

All iCOMPEL publishers can produce and control multiple content channels. This way, you can deliver a high-impact display to the particular audience or segment of customers before you, whether you need to show stored media or live media.

Every zone in the display layout can run on its own schedule. When you activate a schedule, the relevant media will appear, as laid out, on your display. Different layouts can be scheduled to play at different times of the day. Each playlist runs in a continuous loop per a preset schedule.

You can show a video file stored on the iCOMPEL's internal disk (or on models with a video capture card, show live video), show text from an internal feed, and more. Using the RSS subscriber features, you can also display text feeds from the Internet—which is great for streaming news or stock tickers.

Plus, iCOMPEL supports general-purpose input/output (GPIO) capabilities so content playing can be triggered (or halted) by signals originating from external device inputs. Attach a motion sensor, for example, and program the system to activate a screen when the sensor detects someone approaching—great for saving energy and extending screen life. Or set up iCOMPEL to provide emergency notification based on a signal sent when a secure door is opened or when an environmental condition occurs.



Activate scheduled content delivery from the playlist interface.

### Media supported:

- » JavaScript
- » PowerPoint
- » Flash 11
- » Real™ 1, 2, 3, 4
- » MPEG 1, 2, 4 (DivX®)
- » QuickTime
- » AVI
- » MP3 and WAV
- » GIF, TIFF, JPEG, BMP, and PNG still images
- » Static or scrolling text—in any direction or at various speeds
- » HTML (set up one or more zones as a Web page from an existing Web server or an intranet)
- » XML feeds
- » RSS subscriber feeds (to automatically collect and display dynamic textual feeds from the Internet)
- » Live video (on the versions with built-in capture cards for HD Video, ATSC/QAM, or DVB-T)

# iCOMPEL: Typical Applications

## The roles of standalone players and publishers.

All iCOMPEL models except for the subscriber versions work right out of the box with all design and playlist management software preinstalled on the appliance.

If you don't require any advanced Flash or video rendering for your signage, you can use a standalone K Series non-interactive kiosk player. It's designed specifically for simple single-screen applications (in contrast, our interactive K Plus Series models are touch-enabled for use in touchscreen applications).

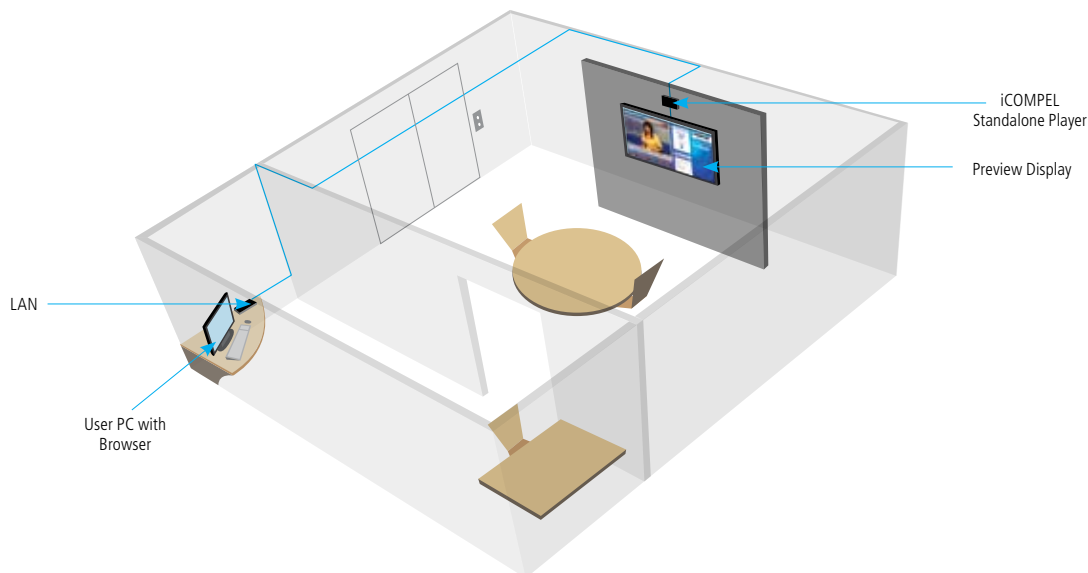
Or you can use a publisher model as a standalone device. A publisher enables you to not only create layouts and manage playlists, but some versions support intensive Flash and video rendering. In addition, a publisher supports the publishing of one or more channels to itself as an FTP client or to an external FTP client. The publisher sends a snapshot of all required files to an FTP file server at a preconfigured location within your IP network.

In a basic standalone setup (like that shown **below**), a single iCOMPEL connects directly to your network and to your display device.

Accessing the device can be done several ways: via a Web browser by providing an IP address along with a name and password; via an FTP client by providing a name and password (for uploading content to the iCOMPEL unit); or via Secure Shell (SSH) by giving an IP address and root password. An Internet connection is required for streaming of Web-based content, including XML and RSS feeds.

The Linux® based appliance's built-in firewall keeps access limited to authorized users only, and there's no need to install any third-party software or virus protection. Plus, it uses HTTP and HTTPS security protocols, and supports the LDAP authentication protocol and VPN capabilities for secure remote access.

## A typical standalone application:



### How it works:

- 1 Connect your iCOMPEL unit to your computer network and to a display device such as an LCD or a plasma screen.
- 2 Apply power to the iCOMPEL unit. You'll see a boot sequence starting.
- 3 The iCOMPEL unit automatically obtains an IP address from the network and shows the address briefly on your display.
- 4 Access the unit through a Web browser using the IP address.
- 5 Time to get creative! Begin by uploading—copying and pasting—media files from your computer to the iCOMPEL system. The files are stored on the disk inside the unit.
- 6 You can then create one or more screen layouts containing one or more rectangular zones. Each zone has a playlist to which one or more of the stored media files can be added.
- 7 Add one or more layouts to a schedule, typically on a weekly basis.
- 8 Activate the schedule. The relevant media will appear in the layout you created on the display device. Each playlist runs in a continuous loop.
- 9 At the scheduled time and day of the week, different layouts will appear on the screen.
- 10 If you have an iCOMPEL model with capture card, you can also stream live video from a CATV or DTV set-top box via the video input on the back of the iCOMPEL unit. Just add the relevant video feed to your iCOMPEL playlist (unlike standard video files, which are stored on the disk inside the unit).
- 11 To show text from an RSS newsfeed, just enter the URL of the Internet feed into the iCOMPEL (which may also need to be configured to access the Internet). Use a similar process when you want to display actual Web pages.

## For larger multiscreen, multisite applications.

iCOMPEL Publishers support more elaborate deployments, too. Used in a multisite application, the publisher appliance acts as a *channel manager*, cloning its media over a network so the same digital signage presentation shows on screens at different sites at specific times.

iCOMPEL Subscribers automatically download and show a channel that's been published by the iCOMPEL publisher. Each subscriber pulls new content and instructions from the iCOMPEL publisher or from an FTP client according to a preset schedule.

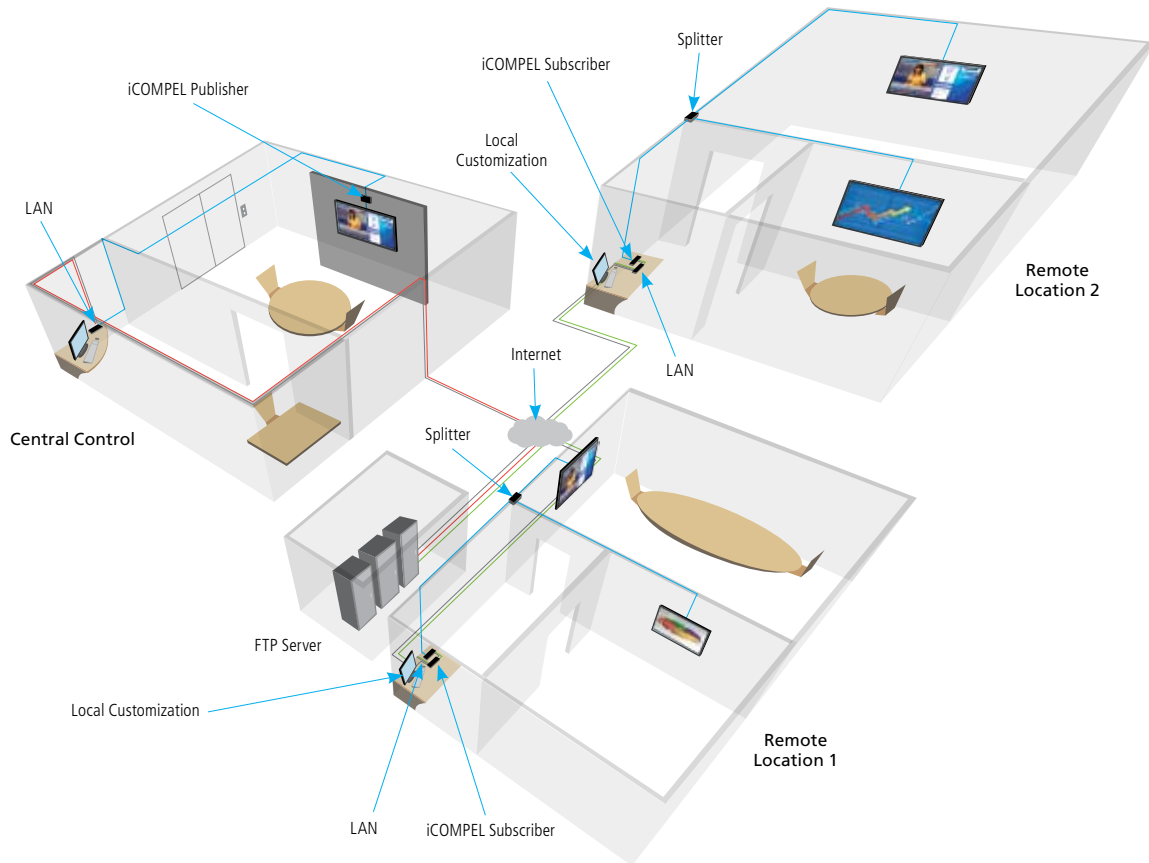
You can also log into a subscriber and customize content on an "ad-hoc" basis, replacing the default content on a specific screen. This is particularly useful in multiscreen applications where you want to locally update content to issue alerts or customize content for local audiences.

Ad-hoc messaging can be scrolling text, text entries in a table, a collection of files in a folder, and similar content. On subscribers with a video capture card, you can use the ad-hoc zone to display a live video feed.



Update messaging in real time with "ad-hoc" capabilities. A welcome message (like that shown here), can be rewritten for the specific site where the iCOMPEL subscriber is located, replacing the default content on a digital signage display.

## A typical multisite application with local "ad-hoc" customization:



### How it works:

You designate an iCOMPEL Publisher as a *channel publisher* and your current schedule is published as a collection of files on the *channel server* (either the iCOMPEL Publisher itself or a file server on the Internet).

You then designate the iCOMPEL Subscriber units as *channel subscribers*, which download all required files from the channel server and activate the new schedule. The subscribers then poll the publisher periodically for changes that may have been republished, downloading new content and deleting redundant content automatically.

Media on the publisher is designated as "ad-hoc" when added to a playlist on the channel publisher. A user with ad-hoc access can log into a subscriber and change the ad-hoc content, replacing the content that you've assigned as the default content. Even if the ad-hoc content is changed on the publisher end and the channel is republished, the subscriber will continue to display the local custom content. However, if the ad-hoc content is removed from the publisher's playlist, then the local custom content is deleted from all subscribers.

# iCOMPEL: Choose Your Model

## Choose from four iCOMPEL families.

### The P Series:

- Our highest-performing system for high-quality SMB signage.
- Features a fast processor for intense content rendering: Flash at >20 fps and video at >30 fps.
- Ideal for showing video in up to four zones simultaneously.
- Supports the display of professional-quality Flash alongside of video, static images, HTML, XML, RSS Web content.
- 2U models have large capacity (500 GB HDD) to store your digital signage content library (VESA models: 40 GB SSD).

Featuring the highest processing power of all iCOMPEL versions, the P Series supports the frames per second needed for smooth video playout and rendering of professional Flash. Plus, it supports up to four video zones, so you can play up to four simultaneous videos on a screen!



Rear view: 2U P Series



Front view: VESA P Series

Also, because the 2U iCOMPEL P Series Publisher units have robust onboard media storage, they can be used as a media server.

To play live video from digital sources, order versions with HD video capture. They provide pure digital connectivity via HDMI input.

### The S Series:

- Our standard-performing system for professional SMB signage.
- Features a fast robust processor for optimized content: Flash at <20 fps and video at <30 fps.
- Ideal for showing two video zones simultaneously.
- Supports the display of optimized Flash alongside of video, static images, HTML, XML, RSS Web content.
- VESA models offer energy savings and reliability, and feature fast-access SSD (2U models: 250 GB HDD).

This series supports up to two video zones playing at the same time and is for users who plan to use their own in-house graphics and PowerPoint movie files alongside of Web content.

You can even order S Series subscribers to receive content from a P Series



Rear view: 2U S Series



Rear view: VESA S Series

publisher in instances where certain screens don't need to show video- or Flash-intensive content like other screens in your application.

To also play live video, order a unit with a built-in TV capture card or a version with a new HD video capture for HDMI input.

### The K Series:

- Standalone players for single-screen applications (kiosk) or touchscreen (interactive kiosk) uses.
- Both versions enable playing of video in two zones simultaneously.
- Economically priced K Series non-interactive kiosk models feature 40 GB SSD storage and support VGA resolutions up to 2048 x 1536.
- Interactive K Plus Series versions feature the same fast processor as our P Series for professional Flash and video rendering, plus 40 GB SSD storage and support for 1080p HD output.

This series includes four VESA-mountable players that support simple one-display signage in kiosk-type applications without any requirements for more than two video zones.

The kiosk and interactive kiosk versions have different types of video connectors and processors. The very affordably priced base kiosk models



Rear view: K Series



Front view: K Plus Series

support analog VGA connections only; whereas the interactive K Plus models feature both VGA and DVI-I connectivity. The interactive models, with Intel® Core™ i3 processing, also support use in interactive kiosks where customers and users expect fast touch response and professional-quality Flash and smooth video rendering on the screen.

### The O Series:

- Modular publishers and subscriber units for convenient installation in an HDTV's Open Pluggable Specification (OPS) slot.
- Includes a fast processor for rendering of professional content: Flash at >20 fps and video at >30 fps.
- Enables playing of video in four zones simultaneously.
- Features 40 GB SSD storage.

These publisher and subscriber iCOMPEL units suit applications where you want all digital signage computing integrated into your display. They install in any screen that has an Intel® Open Pluggable Specification (OPS) slot, which is ideal for signage applications where you don't have room for an external player (or where you worry about securing expensive appliance hardware).



O Series OPS Card

The modular players feature an Intel Core™ i3 Mobile processor for professional Flash. Plus they support the frames per second needed for smooth video playout. The O Series also supports up to four video zones and has 40 GB of onboard SSD storage.



## TECH SPECS

### P Series 2U iCOMPEL Models:

<b>CPU Processor</b> — Intel® Core™ i3	Ethernet: (1) RJ-45 (10/100/1000 Mbps);
<b>System RAM</b> — 2048 MB	External storage: (1) eSATA;
<b>System Storage</b> — 500 GB HDD	HD video capture versions also have:
<b>Video Output Resolution</b> —	(2) HDMI F
Digital to 2560 x 1600; 1080p HD	
<b>Connectors</b> — Video: (1) DisplayPort F,	<b>Power</b> — 100–240 VAC, 50–60 Hz
(1) HDMI F, (1) DVI-I F;	<b>Size</b> — 3"H x 11"W x 10.5"D
Audio: (5) 3.5-mm; (1) TOSLINK®;	(7.6 x 27.9 x 26.7 cm)
USB: (8) USB Type A F: (6) USB 2.0,	<b>Weight</b> — 9.2 lb. (4.2 kg)
(2) USB 3.0;	

### P Series VESA iCOMPEL Models:

<b>CPU Processor</b> — Intel Core i3	(2) USB 3.0, (2) USB Sleep-and-Charge;
<b>System RAM</b> — 2048 MB	Ethernet: (1) RJ-45
<b>System Storage</b> — 40 GB SSD	(10/100/1000 Mbps);
<b>Video Output Resolution</b> —	External storage: (1) eSATA
Digital to 1920 x 1080; 1080p HD	
<b>Connectors</b> — Video: (1) HDMI F,	<b>Power</b> — 90–250 VAC, 50–60 Hz
(1) DVI-I F;	<b>Size</b> — 2.6"H x 11"W x 7.3"D
Audio: (1) 3.5-mm;	(6.6 x 27.9 x 18.5 cm)
USB: (6) USB Type A F: (2) USB 2.0,	<b>Weight</b> — 4 lb. (1.8 kg)

### S Series 2U iCOMPEL Models:

<b>CPU Processor</b> — AMD Fusion E-350	HD video capture versions also have:
<b>System RAM</b> — 2048 MB	(2) HDMI F;
<b>System Storage</b> — 250 GB HDD	TV capture versions also have:
<b>Video Output Resolution</b> —	(1) 4-pin mini DIN F (S-Video),
Digital to 1920 x 1080; 1080p HD	(1) RCA F (Composite video),
<b>Connectors</b> — Video: (1) DisplayPort F,	(1) 3.5-mm (audio) and either
(1) DVI-I F;	(2) F-Type jacks (ATSC/QAM)
Audio: (2) 3.5-mm;	or (1) I-Type jack (DVB-T)
USB: (6) USB Type A F (USB 2.0);	<b>Power</b> — 90–250 VAC, 50–60 Hz
Ethernet: (1) RJ-45	<b>Size</b> — 2.6"H x 11.8"W x 10.7"D
(10/100/1000 Mbps);	(6.6 x 30 x 27.2 cm)
Serial: (2) DB9 F (RS-232);	<b>Weight</b> — 6 lb. (2.7 kg)
Keyboard/mouse: (2) 6-pin mini DIN;	

### S Series VESA iCOMPEL Models:

<b>CPU Processor</b> — AMD Fusion E-350	(10/100/1000 Mbps);
<b>System RAM</b> — 2048 MB	Keyboard/mouse: (2) 6-pin mini DIN;
<b>System Storage</b> — 40 GB SSD	Serial control: (1) DB9 M;
<b>Video Output Resolution</b> —	HD video capture versions also have:
Digital to 1920 x 1080; 1080p HD	(2) HDMI F
<b>Connectors</b> — Video: (1) HDMI F,	<b>Power</b> — 90–250 VAC, 50–60 Hz
(1) HD15 F (VGA);	<b>Size</b> — 1.6"H x 7.9"W x 6.5"D
Audio: (2) 3.5-mm jacks;	(4 x 20 x 16.5 cm)
USB: (4) USB Type A F (USB 2.0);	<b>Weight</b> — 2.4 lb. (1.1 kg)
Ethernet: (1) RJ-45	

### K Series VESA iCOMPEL Models:

<b>CPU Processor</b> — Intel Atom® D525	(10/100/1000 Mbps);
<b>System RAM</b> — 2048 MB	Serial: (1) DB9 M (RS-232);
<b>System Storage</b> — 40 GB SSD	Legacy printer port: (1) DB25 F;
<b>Video Output Resolution</b> —	Keyboard/mouse: (2) 6-pin mini DIN
Analog to 2048 x 1536	
<b>Connectors</b> — Video: (1) HD15 F (VGA);	<b>Power</b> — 90–250 VAC, 50–60 Hz
Audio: (4) 3.5-mm;	<b>Size</b> — 1.8"H x 7.8"W x 7.5"D
USB: (4) USB Type A F (USB 2.0);	(4.5 x 20 x 19 cm)
Ethernet: (1) RJ-45	<b>Weight</b> — 2.9 lb. (1.3 kg)

### K Plus Series VESA iCOMPEL Models:

<b>CPU Processor</b> — Intel Core i3	(2) USB 3.0, (2) USB Sleep-and-Charge;
<b>System RAM</b> — 2048 MB	Ethernet: (1) RJ-45
<b>System Storage</b> — 40 GB SSD	(10/100/1000 Mbps);
<b>Video Output Resolution</b> —	External storage: (1) eSATA
Digital to 1920 x 1080; 1080p HD	
<b>Connectors</b> — Video: (1) HDMI F,	<b>Power</b> — 90–250 VAC, 50–60 Hz
(1) DVI-I F;	<b>Size</b> — 2.6"H x 11"W x 7.3"D
Audio: (1) 3.5-mm;	(6.6 x 27.9 x 18.5 cm)
USB: (6) USB Type A F: (2) USB 2.0,	<b>Weight</b> — 4 lb. (1.8 kg)

### O Series OPS iCOMPEL Models:

<b>CPU Processor</b> — Intel Core i3 Mobile	<b>Connectors</b> — Ethernet: (1) RJ-45
<b>System RAM</b> — 2048 MB	(10/100/1000 Mbps)
<b>System Storage</b> — 40 GB SSD	<b>Power</b> — OPS bus powered
<b>Video Output Resolution</b> —	<b>Size</b> — OPS standard
Per the screen's resolution specification	

Item	Code
<b>iCOMPEL Digital Signage Platforms</b>	
P Series	
2U Publisher Unit	
Standard	ICPS-2U-PU-N
with Wi-Fi	ICPS-2U-PU-W
with HD Video Capture	ICPS-2U-PU-N-H
VESA Mountable Publisher Unit	
Standard	ICPS-VE-PU-N
with Wi-Fi	ICPS-VE-PU-W
2U Subscriber Unit	
Standard	ICPS-2U-SU-N
with Wi-Fi	ICPS-2U-SU-W
with HD Video Capture	ICPS-2U-SU-N-H
VESA Mountable Subscriber Unit	
Standard	ICPS-VE-SU-N
with Wi-Fi	ICPS-VE-SU-W
S Series	
2U Publisher Unit	
Standard	ICSS-2U-PU-N
with Wi-Fi	ICSS-2U-PU-W
with ATSC/QAM TV Capture	ICSS-2U-PU-N-A
with DVB-T TV Capture	ICSS-2U-PU-N-D
with HD Video Capture	ICSS-2U-PU-N-H
VESA Mountable Publisher Unit	
Standard	ICSS-VE-PU-N
with Wi-Fi	ICSS-VE-PU-W
2U Subscriber Unit	
Standard	ICSS-2U-SU-N
with Wi-Fi	ICSS-2U-SU-W
with ATSC/QAM TV Capture	ICSS-2U-SU-N-A
with DVB-T TV Capture	ICSS-2U-SU-N-D
with HD Video Capture	ICSS-2U-SU-N-H
VESA Mountable Subscriber Unit	
Standard	ICSS-VE-SU-N
with Wi-Fi	ICSS-VE-SU-W
K Series	
K Series VESA Mountable Standalone Player Unit for Kiosks	
Standard	ICKS-VE-KU-N
with Wi-Fi	ICKS-VE-KU-W
K Plus Series VESA Mountable Standalone Player Unit for Interactive Kiosks	
Standard	ICKP-VE-IU-N
with Wi-Fi	ICKP-VE-IU-W
O Series	
Intel Open Pluggable Specification (OPS)	
Publisher	ICOS-PU
Subscriber	ICOS-SU

### You may also need...

iCOMPEL Rackmount Ears for (1) 2U S Series/P Series Unit	ICOMP-RACK
iCOMPEL Wallmount Kit for (1) 2U S Series/P Series Unit	ICOMP-WALL
iCOMPEL Keys	Stream-In Stream-Out USB HID Touchscreen Feature
	ICOMP-IN ICOMP-OUT ICOMP-TOUCH
S-Video to Composite Video Adapter (for ATSC/QAM TV Capture Models)	ICOMP-VID-SV
iCOMPEL Remote Control (For details, see p. 11.)	ICOMP-RC
iCOMPEL Wi-Fi Module (Retrofit) (For details, see p. 10.)	ICOMP-WIFI

For help ordering your iCOMPEL solution, call our FREE, 24/7 Tech Support at 724-746-5500. For managing larger signage networks remotely from any location, see our iCOMPEL Deployment Managers (iDMs) at [blackbox.com](http://blackbox.com).

# iCOMPEL: Complete Your Solution

## iCOMPEL options in detail:

### iCOMPEL Wi-Fi Module (ICOMP-WIFI)

- Adds 802.11a/b/g/n wireless capabilities to an iCOMPEL unit.
- Great for areas where wired signage connections aren't possible.
- Also use for redundant wired/wireless links to screens.
- 802.11n provides the bandwidth to transport HD media more reliably.
- Simple to configure and manage via the iCOMPEL user interface.
- User interface displays your wireless Ethernet network settings, SSID, security settings, bit rate, signal strength, and more.
- Supports network connectivity tests (ping, trace route, and DNS lookup).
- Uses WPA-PSK or WEP network security protocols.
- Easy to integrate into an existing WLAN's access point infrastructure.
- Includes Wi-Fi card and dual-band antennas (installed by Black Box only).
- 64-, 128-, and 152-bit WEP encryption and 802.1x authentication.
- Saves you the cost and time of having to build out an existing wired LAN network to reach screens.

*NOTE: You can order the ICOMP-WIFI factory installed in an iCOMPEL unit (all models except for the O Series iCOMPEL); for our selection of Wi-Fi models, see page 9). Or you can order it as a retrofit on an existing iCOMPEL appliance or player; for details on the retrofit option, contact Black Box.*



*The iCOMPEL Wi-Fi Module's antennas shown installed on a smaller iCOMPEL chassis.*

### Use 802.11n Wi-Fi for:

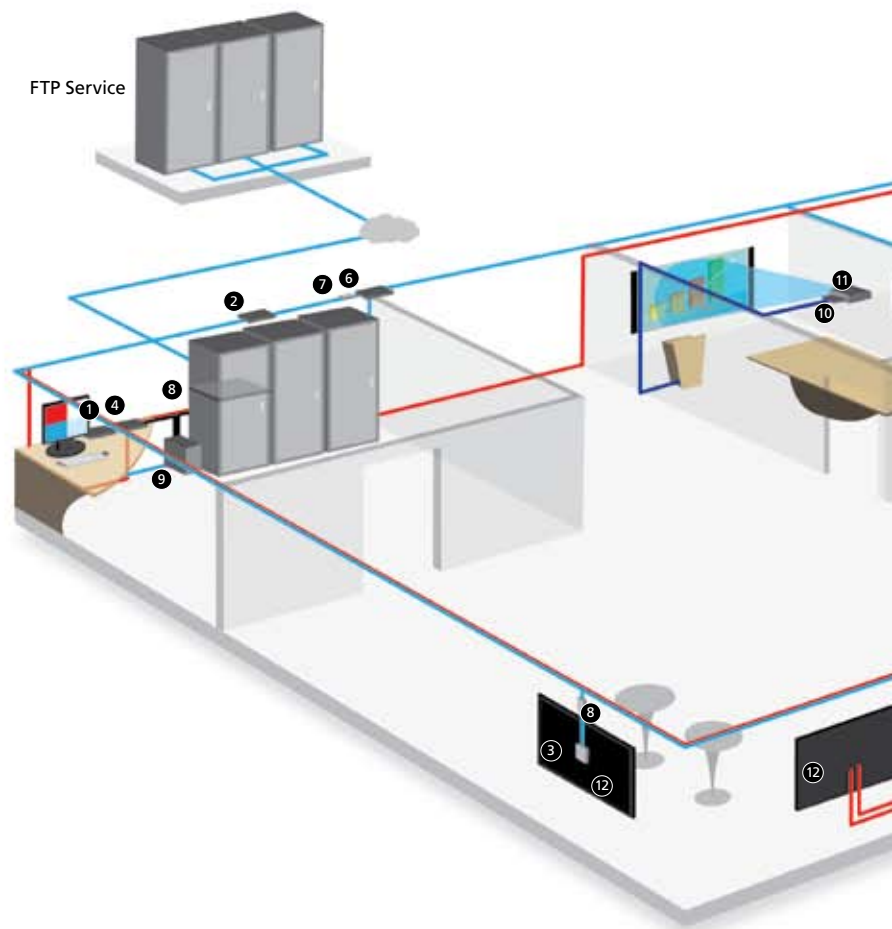
- » Signage in historic buildings where cables would be unsightly.
- » Buildings with ornate marble, brick, or similarly finished surfaces.
- » Always-on signage applications where redundancy is a must-have.
- » Retail end cap or island screens not easily reached by cabling.
- » Any application where cable runs would create a hazard.
- » Any signage that needs to be rapidly deployed without disrupting nearby operations.
- » Trade show or conference hall signage (including rental and staging setups).

## Black Box: We're your provider of the total digital signage solution.

Black Box is your source for everything behind the screens. And we mean everything: splitters, extenders, switches, scalars, plus all the hardware you need to integrate your multimedia distribution and management system into your existing IT infrastructure. Not only are we knowledgeable about today's latest AV components, but we know IT networks, too. Black Box has been handling IT for well over 30 years.

### Products shown in the diagram:

- 1 ServSwitch™ 4site (KVP4000A)**  
This KVM switch enables control of four multimedia servers from one keyboard and mouse, displaying the video from the servers on one monitor at the same time.
- 2 iCOMPEL™ Publisher**  
Here, we show how the iCOMPEL is used as a publisher to distribute content over the LAN.
- 3 iCOMPEL Subscribers**  
These iCOMPEL units receive the content sent via the LAN.
- 4 HD View™ Transmitter (AC3000A)**  
It sends video, audio, and RS-232 data over CATx cabling separate from that used for iCOMPEL content distribution.
- 5 HD View Receiver (AC3003A)**  
This unit receives the multimedia signals sent from the HD View Transmitter.
- 6 Pure Networking™ Ethernet Switches (LB8505A-R2)**  
These affordable, 10-/100-Mbps switching devices manage traffic on the LAN segments.



## iCOMPEL Remote Control (ICOMP-RC)

- Handheld IR unit for easy, on-demand control of content and volume right at the screen.
- No need to log in to the user interface when you want to get a desired video or presentation to appear on-screen.
- Push one of four assignable buttons to select content (videos, images, and even layouts and playlists).
- Switch content inside a single zone or across multiple zones in sync.
- Interrupt the playing of a playlist and jump to a specific item in the playlist.
- Also controls TV channel selection on versions with HD or TV capture.
- Enables administrators to delegate control of local content to local users.
- "Pick list" creation function for restricting what TV content can be shown.
- Ideal for museums, lobbies and waiting rooms, trade shows, or anywhere you frequently need to adjust volume.
- Includes IR sensor on cord that plugs into iCOMPEL unit's USB port.
- For ordering information, see [page 9](#).

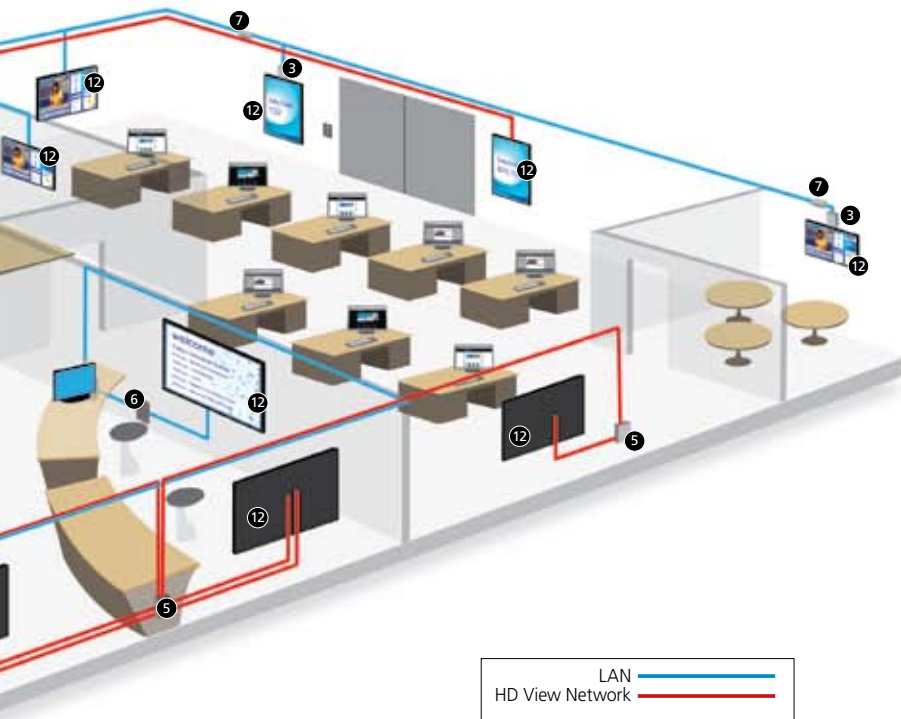


## NEC/3M iCOMPEL Touchscreen LCDs (USB)

- NEC® P Series/V Series LCDs with built-in 3M® USB touchscreen overlays.
- Integrated MicroTouch™ DST technology for fast, precise touch detection.
- Fully tested to work with iCOMPEL appliances and players.
- Touch operation unaffected by surface contaminants.
- Chemically strengthened glass with anti-glare surface.
- Remotely manageable via serial RS-232 or Ethernet ports.
- Budget-friendly 32", 42", 46", and 60" V Series models are ideal for areas without any temperature concerns.
- Professional-grade, thin-bezel 40", 46", and 60" P Series LCDs feature added thermal protection; ideal for always-on signage in public areas.
- For details, visit [blackbox.com/go/iCOMPELtouch](http://blackbox.com/go/iCOMPELtouch).



In addition to offering the technology to control and extend digital signage content to your screens, Black Box has a wide selection of copper and fiber cables, connectors, patch panels, raceways, and cabinets and racks. Plus, we offer a number of power protection and power management solutions, as well as tools and testers. There really is no other reason to go anywhere else to get your total, end-to-end network digital signage.



- 7 CAT6 In-Line Surge Protectors (SP529A)**  
Don't forget to protect cable interfaces from power surges.
- 8 Remote Power Manager (P5568A)**  
Install this 8-outlet manager in a cabinet to set up out-of-band power management. Great for saving energy!
- 9 Eaton® 5P2200 UPS, 1950 VA/1920 Watts (5P2200)**  
Provide surge suppression and battery backup during brief power outages for devices linked in your digital signage network.
- 10 Wireless Video Presentation System III (AC1132A)**  
This ceiling-mounted receiver enables many Wi-Fi® laptop users to share PC or Mac® video through a VGA projector. If you have a conference room, this is a must-have solution.
- 11 SVGA Projector**  
Run brilliant, color-rich presentations using one of our 1080p SVGA projectors. Call us for the latest offerings.
- 12 Professional-Grade LCDs with Wallmounts**  
We also offer many professional-grade LCDs, including touchscreen versions (see above). Call us for the latest versions, as well as mounting hardware for the screens.

# The Black Box difference:

We have products plus the support to help you succeed!

The industry-leading technology you want,  
the objective, helpful advice you need,  
and the 24/7 support you can count on.



## Five great extras you get with Black Box:

- 1. FREE 24/7 Tech Support.**  
It's 11 p.m. and you need help. Don't worry. Our Tech Support experts are available around the clock every day of the year to lend assistance. Plus, we answer all calls in 30 seconds or less—a service that's always FREE.
- 2. FREE training and resources.**  
Getting started with digital signage is easy with Black Box. We can provide you and your staff with dedicated training to get up and running fast. We also have on-line resources, how-to videos, a support site, and more.
- 3. The opportunity to earn signage expert certification.**  
By completing our FREE Digital Signage Certification Program, you'll not only learn how to deploy digital signage successfully, you'll also earn four CEU credits toward your InfoComm Certified Technology Specialist™ certification.
- 4. System integration expertise.**  
A lot of companies know signage and little else. But Black Box looks at the big picture. We figure out the smartest and most cost-effective way to integrate your signage into your existing network infrastructure.
- 5. Help on-site if you need it.**  
With our large international footprint, we can be most anywhere on-site to help you with design and implementation. We offer on-call support for new signage networks, converged systems, data centers, call centers, and more.



© Copyright 2012. Black Box Corporation. All rights reserved. Printed in U.S.A. Black Box® and the Double Diamond logo are registered trademarks of BB Technologies, Inc. iCOMPEL™, ServSwitch™, HD View™, and Pure Networking™ are trademarks of BB Technologies, Inc. Any third-party trademarks appearing in this publication are acknowledged to be the property of their respective owners.