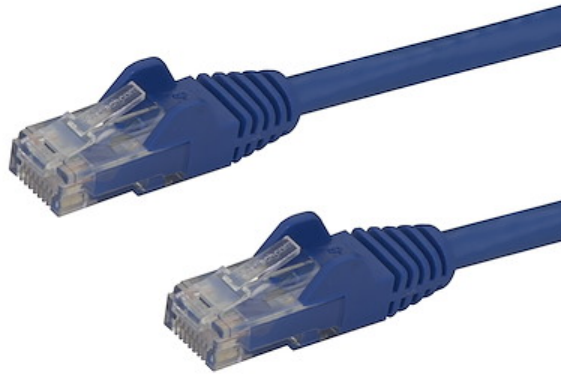


2ft CAT6 Ethernet Cable - Blue CAT 6 Gigabit Ethernet Wire -650MHz 100W PoE RJ45 UTP Network/Patch Cord Snagless w/Strain Relief Fluke Tested/Wiring is UL Certified/TIA

**Product ID:** N6PATCH2BL



This Cat6 cable delivers reliable Gigabit network connections, which ensures high-performance capability for your demanding Ethernet applications.

This 2-foot blue patch cable is perfect for standard applications such as connecting from a wall jack to your laptop docking station or desktop computer.

For easier network installations, our Cat6 patch cables are available in a wide variety of lengths and colors. This ensures you have the right size of cable available when you need it and it lets you color code your connections for a more organized setup.

For trouble-free cable runs, this durable cable features snagless connectors that protect the RJ45 clips during installation, making them less likely to snag or break.

The cable also features molded boots which offer connector strain relief by stopping the RJ45 connector termination points from bending at sharp angles. This reduces the risk of damage to the cable, which could decrease network connectivity and performance.

Get the highest value for your cable investment with our Cat6 Ethernet cables. Each of our patch cables is manufactured using high-quality copper conductors and they are carefully constructed and tested, to keep Near-End Crosstalk (NEXT) well within acceptable limits.

Ensure high-performance capability for your demanding Ethernet applications, such as Power-over-Ethernet and 4K or 1080p video streaming, using cables that include 24 AWG copper.

You can rely on our RJ45 connectors to deliver optimum conductivity while eliminating signal loss due to oxidation or corrosion.

The N6PATCH2BL is backed by StarTech.com's lifetime warranty for guaranteed reliability.

## Certifications, Reports and Compatibility

### Applications

- Designed for use with Gigabit networks
- Patches from hub to distribution panel
- Connects workstation to wall outlet

### Features

- High-quality 24 AWG copper wire
- ETL verified
- HIGH PERFORMANCE CAT6 ETHERNET CABLE: 100% copper for error-free Multi Gigabit 1/2.5/5Gbps connections; 10Gbps up to 160'; Fluke patch cord tested to comply w/ANSI/TIA-568-2.D Category 6; ETL Verified
- POE SUPPORT: 24 AWG stranded copper conductors & UL Rated Wiring (E132276-A) supports up to 100W for PoE devices like VOIP phone & security systems; IEEE 802.3bt & DTE power compliance reduces cable heating
- QUALITY CONSTRUCTION: ETL & UL certified wire; 50-micron gold-plated connectors prevent rust/corrosion to avoid costly network downtime; High quality PVC jacket resists bending or fraying damage
- EASY INSTALLATION: 2 foot snagless patch cord for easy installation & flexible disconnection in wiring conduits; Compatible w/Cat5e & earlier standards; Molded boots available for constrained spaces
- SPECS: Length: 2ft (60cm) Color: Blue 650 MHz Rated Structure: 4 Pair UTP RJ45 Jacket: PVC Wire Gauge: 24 AWG Copper Wiring: ANSI/T568B ETL Verified Warranty: Lifetime

---

#### Prominence

	Warranty	Lifetime
Description	CDW 75 - 1st Line	StarTech.com CAT6 Ethernet Cable 2' Blue 650MHz CAT 6 Snagless Patch Cord

---

#### Hardware

Number of Conductors	4 pair UTP
Connector Plating	Gold
Cable Jacket Material	PVC - Polyvinyl Chloride
Fire Rating	CMG Rated (General Purpose)
Cable Type	Snagless

Wiring Standard	TIA/EIA-568-B.1-2001 T568B
-----------------	----------------------------

---

**Performance**

Cable Rating	CAT6 - 650 MHz
--------------	----------------

---

**Connector(s)**

Connector A	RJ-45
-------------	-------

Connector B	RJ-45
-------------	-------

---

**Physical Characteristics**

Color	Blue
-------	------

Wire Gauge	24 AWG
------------	--------

Conductor Type	Stranded Copper
----------------	-----------------

Cable Length	24.0 in [61.0 cm]
--------------	-------------------

Product Length	24.0 in [61.0 cm]
----------------	-------------------

Weight of Product	1.1 oz [30 g]
-------------------	---------------

---

**Packaging Information**

Package Length	8.7 in [22 cm]
----------------	----------------

Package Width	7.7 in [19.5 cm]
---------------	------------------

Package Height	0.4 in [10 mm]
----------------	----------------

Shipping (Package) Weight	1.5 oz [42 g]
---------------------------	---------------

---

**What's in the Box**

Included in Package	Cat6 patch cable
---------------------	------------------

---

**\*Product appearance and specifications are subject to change without notice.**

