

ThinkCentre M60e

Setup Guide

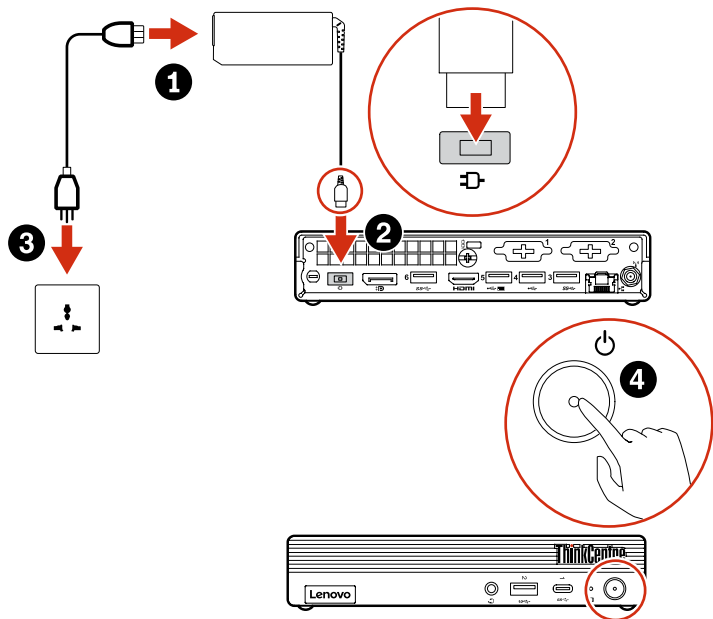
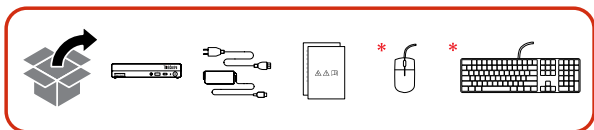
Lenovo

For Barcode Position Only

Printed in China

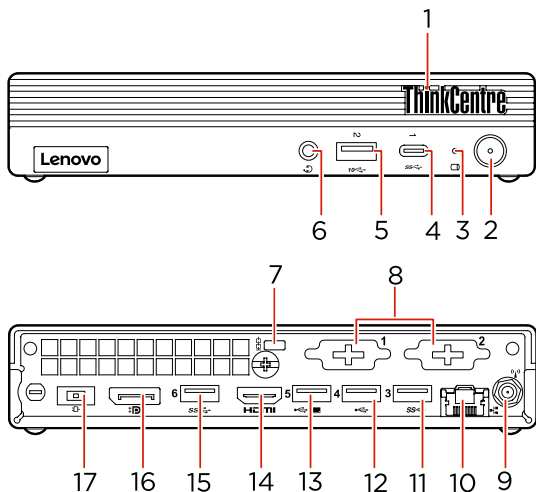
PN: SPXXXXXXX

Initial Setup




* For selected models

Overview



1. ThinkCentre® LED
2. Power button
3. Storage drive activity indicator
4. USB-C® (3.2 Gen 1) connector
5. USB 3.2 connector Gen 2
6. Headset connector
7. Security-lock slot
- * 8. Optional connectors
- * 9. Wi-Fi® antenna slot
10. Ethernet connector
11. USB 3.2 connector Gen 1
12. USB 2.0 connector
13. USB 2.0 connector
14. HDMI™ out connector
15. USB 3.2 connector Gen 1
16. DisplayPort® out connector
17. Power adapter connector

 Read the statement on USB transfer rate in the *User Guide*. Refer to the *Safety and Warranty Guide* for accessing the *User Guide*.

* For selected models

Additional information

European Union — compliance with the Radio Equipment Directive

Hereby, Lenovo (Singapore) Pte. Ltd., declares that the radio equipment type ThinkCentre M60e is in compliance with Directive 2014/53/EU.

The full text of the system EU declaration of conformity is available at the following Internet address:

<https://www.lenovo.com/us/en/compliance/eu-doc>

This radio equipment operates with the following frequency bands and maximum radio-frequency power:

Technology	Frequency band [MHz]	Maximum transmit power
WLAN 802.11b/g/n/ax	2400 - 2483.5	< 20 dBm

Technology	Frequency band [MHz]	Maximum transmit power
WLAN 802.11a/n/ac/ax	5150 - 5725	< 23 dBm
WLAN 802.11a/n/ac/ax	5725 - 5875	< 13.98 dBm
Bluetooth BR/EDR/LE	2400 - 2483.5	< 20 dBm

Usage of all the radio devices is limited to indoor in the band 5150 MHz to 5350 MHz (channels 36, 40, 44, 48, 52, 56, 60, 64).



First Edition (January 2021)

© Copyright Lenovo 2021.

LIMITED AND RESTRICTED RIGHTS NOTICE: If data or software is delivered pursuant to a General Services Administration "GSA" contract, use, reproduction, or disclosure is subject to restrictions set forth in Contract No. GS-35F-05925.

Reduce | Reuse | Recycle

