

Interactive Whiteboard

RICOH Interactive Whiteboards with the Windows® 10-based Controller

D5520, D6510 and D8400

RICOH
imagine. change.



Remotely
collaborate with
laptops and
mobile devices

No external
computer
required

Brilliant HD
and 4K
multi-touch
screens
(55" – 84")

Available video-
conferencing
services

Work smarter in groups

Empower your onsite and remote workers, clients or customers to become more engaged in real-time collaboration and meetings with our Interactive Whiteboards (IWBs) with Windows® 10-based Controllers. Our Windows® controller lets you use your preferred apps and cloud solutions including Office 365™ and Skype® for Business. Select from three models of IWBs—also known as Interactive Flat Panel Displays or IFPDs—with screen resolutions and sizes of HD 55" (D5520), HD 65" (D6510) and 4K 84" (D8400). Bundle the IFPDs with our visual communication hardware, apps, cloud services and business services for all-in-one solutions that can fully meet your business needs. Now, convert any area into a modern collaborative space where you can brainstorm ideas faster, conveniently manage complex projects and training, and transform presentations into interactive experiences with touchscreen annotations, video communications and information sharing.

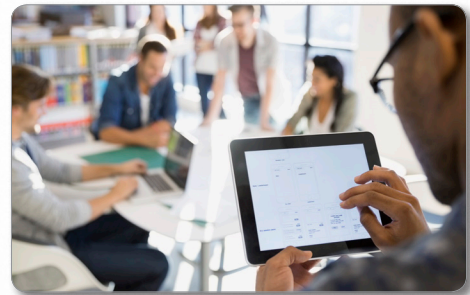
Maximize engagement

Showcase important graphics or documents, and convey your ideas clearly in crisp 1920 x 1080 HD resolution—or brilliant 3840 x 2160 4K resolution that includes 10-bit processing of more than one billion colors. This helps your participants notice precise details and see lifelike quality. The anti-glare touchscreen with LED backlighting and deep contrast help to ensure that participants can see what is on the screen in almost any lighting conditions. Use the IFPDs with their embedded controller to present, or use the IFPDs as displays only and connect via VGA, HDMI, DVI-D or DisplayPort. The 10-point touchscreen allows you to easily switch between tasks and make natural drawings and handwritten annotations, zoom in and zoom out, and undo changes with your fingers.



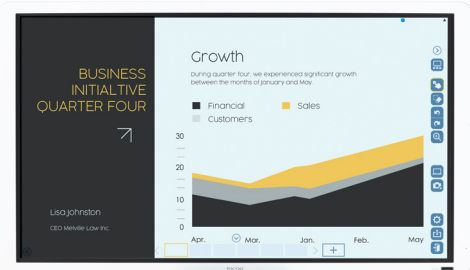
Collaborate across your network

Whether your group is small or includes hundreds of participants, you can find the most effective and cost-efficient way to scale real-time collaboration on our IFPDs. If you choose to stay on your private network, you can add a collaborative license to our IWB Lt. software. This lets you connect with two-way collaboration with up to 19 additional IFPDs. Each licensed IFPD can connect to as many as 50 endpoints (laptops and mobile devices) also with real-time, two-way collaboration. That means that you could distribute 20 licensed IFPDs on your network and interactively collaborate with up to 1,000 participants without adding an additional public cloud service fee. You can use the public cloud to collaborate and project manage via Skype® for Business, Google Hangouts®, Join.Me®, JIRA® and more solutions.



Get started in a snap

Our IFPDs with Windows®-based controllers are ready out-of-box solutions. There's no need to connect the IFPDs to a dedicated computer to operate the display, or use expensive proprietary software with recurring maintenance fees. And with their highly intuitive user experience, you can conveniently deploy the IFPDs at locations with limited or no IT support. You can also connect the IFPDs to Ricoh digital projectors to present and interactively collaborate with large groups. Bundle the IFPDs with our mobile stand to easily move them about your workplace.



Easy to use

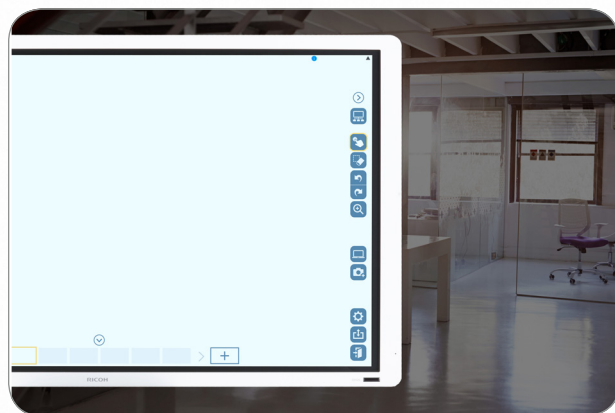
Interact face-to-face

You can better engage remote participants when you can see their facial expressions and body communication. That's why we offer optional videoconferencing hardware and software for our IFPDs to help you clearly communicate your ideas and get more work done faster. With our Windows®-based controller, you can decide whether to use the Ricoh UCS or UCS Advanced Service, or use Skype® for Business and other popular collaboration apps. Our optional UCS Service enables you to collaborate with large numbers of remote participants in many different locations. And because our UCS Service takes up no more than 2 MBps, you don't have to worry about interruptions due to limited bandwidth or slow network speeds. If you want to help ensure that you can start web or video conferences without delays, use the RICOH® UCS Service Advanced, an open WebRTC solution, to let your remote participants painlessly join presentations or collaborate with you from any online mobile device, laptop or legacy videoconferencing equipment.



Simplify your configuration

Our IFPDs with Windows®-based controllers are built from the ground up for modern collaboration, rather than assembled from multiple pieces, such as when a mini PC is simply mounted onto a touchscreen monitor. Mounted mini PCs are at increased risk of being stolen, and may also interrupt consistent performance, since they require video cables for connectivity—rather than the more reliable bus connections that link our embedded Windows®-based controller directly to its touchscreen display. Our completely integrated solution also helps you scale seamlessly. Add more of our IFPDs to your network without worrying about incurring more fees for ongoing IT maintenance including updating of third-party management software.



Get the most from your investment

For more than 80 years, we have helped enterprises maximize the ROI of their IT investments. As you take the journey to transform your workspace for today's faster, more collaborative work styles, we want to partner with you step by step. Benefit from our expertise and 24/7 global customer support, so you can focus on competing in a smarter, faster business world. Let us focus on keeping your collaboration technology ahead of trends and providing the services to help you thrive in the information economy. And we believe that relationships matter: Wherever you deploy our IFPDs, our extensive network and optional business services will be there to help you reach your goals.



To view detailed features of our multifunction products
online go to www.ricoh-usa.com/products

RICOH D5520/ D6510/ D8400

SYSTEM SPECIFICATIONS

| Model | D5520 | D6510 | D8400 |
|---------------------------------------|--|--|--|
| Panel size | 55" (48.5" horizontal x 27.9" vertical) | 65" (56.2" horizontal x 31.6" vertical) | 84" (73.25" horizontal x 41.2" vertical) |
| Display type/ Backlight | Liquid Crystal Display (LCD)/ LED system | | |
| Resolution | 1,920 x 1,080 dpi | 1,920 x 1,080 dpi | 3,840 x 2,160 dpi |
| Color | 16.7 million (8 bit color processing) | 1.07 billion (10 bit color processing) | 1.07 billion (10 bit color processing) |
| Brightness | 450 cd/m2 | 350 cd/m2 | 350 cd/m2 |
| Aspect ratio | 16:9 | | |
| Contrast ratio | 1,100:1 | 4,000:1 | 1,400:1 |
| Pixel pitch | 0.630 x 0.630 mm | 0.744 x 0.744 mm | 0.4845 x 0.4845 mm |
| Response speed | 12 milliseconds | 8 milliseconds | 5 milliseconds |
| Viewing angle (H/V) | Left and Right: 178° Up and Down: 178° | | |
| Display glass | 3 mm thick anti-glare glass | 3 mm thick anti-glare glass | 4 mm thick anti-glare glass |
| Touch sensor | | | |
| Technology | Shadow Sense | Shadow Sense | Infrared Touch |
| Maximum touch points | 10 [When IWB software is active, max. number of touch points is 4] | | |
| Touch resolution | 1,920 x 1,080 dpi | | |
| Touch screen interface | USB 2.0 Type B (located on side panel; D8400: located on the bottom) | | |
| Touch accuracy | +/- 6.5 mm (over 90% area) | +/- 6.5 mm (over 90% area) | +/- 10 mm (over 90% area) |
| Operating system support | Multi-touch (up to 10): Windows® 7, 8, 8.1, 10 Single Touch: Windows® 7, Mac® OS 10.6+ | | |
| General | | | |
| Video input | Mini D-Sub 15-pin (VGA) x 1, HDMI x 1 (HDCP compliant), DVI-D x 1 (HDCP compliant; D8400: DVI-D x 2), DisplayPort x 1 (HDCP compliant), USB 2.0 Type A (for video device power supply only) | | |
| Video output | DisplayPort x 1 | | |
| Audio input / output | In: 3.5 mm Line in Jack x 1 (For VGA, DVI) Out: +/- Speaker Terminals x 1 pair | | |
| Touch screen control | USB 2.0 Type B x 1 | | |
| Display control | RS-232c x 1 (Input), RS-232c x 1 (Output) | | |
| Dimensions (W x D x H) | 52.9" x 4.7" x 30.3" (1,345 x 119 x 770 mm) | 60.9" x 6.0" x 34.9" (1,546 x 154 x 888 mm) | 76.2" x 5.16" x 44.56" (1935 x 131 x 1134mm) |
| Weight | 101.4 lbs. (46 Kg) | 132.3 lbs. (60 Kg) | 228.8 lbs. (104 kg) |
| Power source | AC 100 – 240 V / 50 – 60 Hz | | |
| Power consumption operating / standby | < 255 W / < 0.5 W | < 350 W / < 0.5 W | < 564 W / < 0.5 W |
| Advanced display features | RS232 Control Daisy Chain, Picture Mode (including Low Blue Light mode), Backlight, Adaptive Contrast (Dimming Control), Brightness, Chroma, Phase, Sharpness, Color Temperature, Treble, Bass, Balance, Volume, Mute, Speaker, Audio Source, Picture-in-Picture, Picture-by-Picture, Aspect, Adjust Screen, Touch Feature, Language, Power Save, Control Setting, Touch Control Setting, Set Monitor ID, Advanced Features, Information | | |
| Remote sharing function | Up to 20 interactive whiteboards and projector systems. Up to 20 browser viewers per interactive whiteboard (business controller only). Up to 50 remote devices (iOS®, Android® and Windows®) | | |
| Remote PC operation | Yes | | |
| Bluetooth | Supported, v2.1+EDR V3.0/V4.0 | Supported, v2.1+EDR V3.0/V4.0 | N/A |
| Windows® 10 Controller | | | |
| CPU | Intel® Core i5 6500TE 2.3GHz | | |
| Operating System | Windows 10® | | |
| HDD | 500 GB | | |
| RAM | 16 GB | | |
| Business (Ricoh) Controller | | | |
| CPU | Intel® Core i5 4590T 2.1GHz | | |
| Operating System | Windows® Embedded Standard 8 64bit | | |
| SSD | 64 GB | | |
| RAM | 8 GB | | |
| Options | | | |
| Interactive whiteboard stands | Type 2 | Type 3 | Type 4 |
| More options | Pen Sensor Kit Type 3, Interactive Whiteboard Remote License Type 1 | | |
| Web/videoconferencing options | Built-in speakers: 12 W x 2 (Stereo)Built-in microphone: 58 dB S/N Ratio Optional video camera: Camera Unit Type 1 | Built-in speakers: 12 W x 2 (Stereo)Built-in microphone: 58 dB S/N Ratio Optional video camera: Camera Unit Type 1 | Built-in speakers: 12 W x 2 (Stereo) Optional video camera: Camera Unit Type 1 |

| Item | Description | EDP Code |
|-------------------------|---|------------|
| Remote license | RICOH® Interactive Whiteboard Remote License Type 1 | 431128 |
| Windows® Controller | Controller with Windows® 10 | 432308 |
| Business Controller | RICOH® Interactive Whiteboard Controller Type 1 | 432071 |
| Pen sensor | RICOH® Interactive Whiteboard Pen Sensor Kit Type 3 | 432219 |
| Camera unit | RICOH® Interactive Whiteboard Camera Unit Type 1 | 432221 |
| Wireless Touch Keyboard | Logitech® Wireless Touch Keyboard and Touchpad | 920-007119 |
| 55" IWB | RICOH Interactive Whiteboard D5520 | 432206 |
| 65" IWB | RICOH Interactive Whiteboard D6510 | 432212 |
| 84" IWB | RICOH Interactive Whiteboard D8400 | 432098 |
| Stand | Interactive Whiteboard Stand Type 2 | 431196 |
| Stand | Interactive Whiteboard Stand Type 3 | 432135 |
| Stand | Interactive Whiteboard Stand Type 4 | 432290 |

Disclaimer: Brightness will depend on input mode and other picture settings. Brightness level will decrease over time. USB with security or anti-virus software installed are not compatible. Remote sharing function requires Remote License. Remote License is required for collaborative meetings. For wall mounting, use a standard VESA 400x400 mount (not supplied by Ricoh). Via intranet, required line speed: Min. 200Kbps, recommended over 512Kbps. For availability of models, options and software, please consult your local Ricoh supplier.

RICOH
imagine. change.

www.ricoh-usa.com

Ricoh USA, Inc., 70 Valley Stream Parkway, Malvern, PA 19355, 1-800-63-RICOH

©2017 Ricoh USA, Inc. All rights reserved. Ricoh® and the Ricoh logo are registered trademarks of Ricoh Company, Ltd. All other trademarks are the property of their respective owners. The content of this document, and the appearance, features and specifications of Ricoh products and services are subject to change from time to time without notice. Products are shown with optional features. While care has been taken to ensure the accuracy of this information, Ricoh makes no representation or warranties about the accuracy, completeness or adequacy of the information contained herein, and shall not be liable for any errors or omissions in these materials. Actual results will vary depending upon use of the products and services, and the conditions and factors affecting performance. The only warranties for Ricoh products and services are as set forth in the express warranty statements accompanying them.