

Tenda



All for better networking.

TX9 Pro

AX3000 Dual Band Gigabit Wi-Fi 6 Router



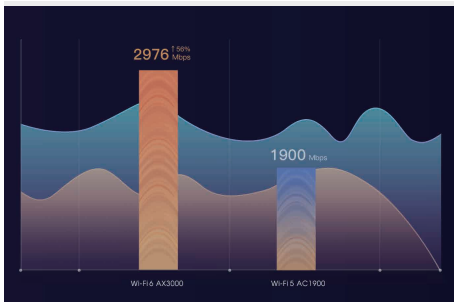
TX9 Pro

AX3000 Dual Band Gigabit Wi-Fi 6 Router

Products Description

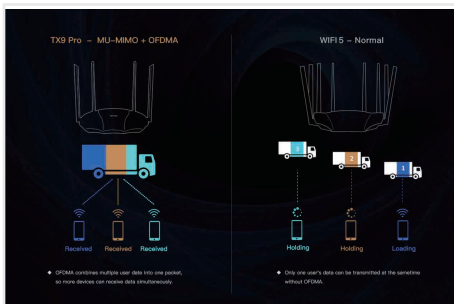
TX9 Pro is an AX3000 Wi-Fi 6 router with the dual-band concurrency rate up to 2976Mbps (2.4GHz:574Mbps, 5GHz:2402Mbps). It's equipped with dual-core 1.6GHz CPU, providing powerful processing capacity and more stable operation. TX9 Pro 2.4GHz & 5GHz adopt external FEM design simultaneously to improve spectrum utilization and communication efficiency. By using OFDMA+MU-MIMO technology, the delay is reduced, more devices can be connected to the Internet at the same time and the transmission efficiency is significantly improved.

Selling Points



AX3000 for Ultra-Fast Transmission Speed

TX9 Pro is a Dual-band Wi-Fi 6 router that provides 160MHz bandwidth and 1024-QAM for ultra fast wireless connection. With a total networking speed of 2976Mbps — 574Mbps on the 2.4GHz band and 2402Mbps on the 5GHz band.



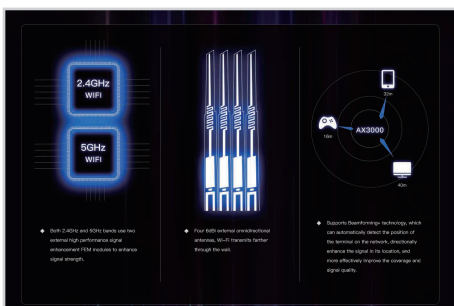
Minimize Lag for a better smart products experience

With the innovative combination of OFDMA + MU-MIMO, 802.11ax technology provides greater network capacity and efficiency in congested environments than Wi-Fi 5. OFDMA divides each channel into small sub-channels, allowing signals from multiple appliances to be bundled together and transmitted simultaneously, reducing latency for a smoother Wi-Fi experience.



1.6GHz Dual-Core Processor Provides Faster and More Stable Wi-Fi experiences

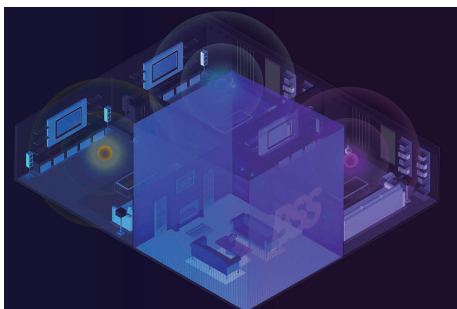
Equipped with 1.6GHz high performance Dual-core processor, the operating capacity reaches up to 3000 DMIPS, and NPU processing speed reaches 2220 MHz, which improves network load capacity, responds faster and more stable.



" Four Plus Four " Makes Full Wi-Fi Coverage

Four FEM Modules with the independent signal amplification work with four 6dBi external omnidirectional dual-band antennas for wider Wi-Fi coverage.

Selling Points



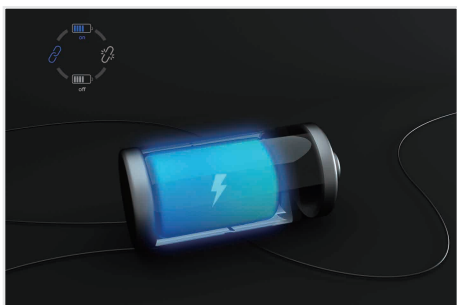
BSS Coloring Reduces Interference and Improves Efficiency

Supporting BSS coloring technology, TX9 Pro effectively alleviates co-frequency interference, improves spectrum utilization and communication efficiency.



IPv6 Supported

Compared with IPv4 protocol, IPv6 has a large number of IP addresses. Unordered Internet access through address translation can shorten the data transmission time between Internet devices and servers.



TWT Extends Battery Life of Connected Devices

TWT (Target Wake-up Time technology) can effectively reduce the power consumption of terminal equipment and greatly extend its battery life.



The Next-Gen Security Protocol WPA3

The TX9 Pro carries a new generation of Wi-Fi security standard WPA3, which increases the difficulty of algorithmic and network password cracking to prevent forced-attacks, violent cracking.

Technical Specifications

Hardware Specifications

Standard&Protocol	IEEE802.3, IEEE802.3u, IEEE802.3ab
Interface	10/100/1000Mbps WAN port*1; 10/100/1000Mbps LAN ports*3;
Antenna	4*6dbi external antennas
Button	1*WPS/Reset button
Power	Output:DC 12V2A
LED	1*LED
Dimension	(L*W*H)272.44x162.85x43.71mm

Wireless Function

Wireless Standard	802.11b/g/n/a/ac/ax
Data Rate	5GHz:2402Mbps 2.4GHz:574Mbps
Frequency	2.4GHz & 5GHz
Wireless Security	WPA-PSK WPA2-PSK WPA/WPA2-PSK WPA3-SAE WPA3-SAE/WPA2-PSK

Software Function

Internet Connection Type	PPPOE Dynamic IP, static IP
Operating Mode	Wireless Router Mode AP Mode
DHCP	DHCP Server DHCP Client List
Security	Client Filter (supports black list and white list) Parental Control (supports black list and white list)
Firewall	ICMP Flood Attack Defense TCP Flood Attack Defense UDP Flood Attack Defense Lgnore Ping Packet From WAN Port
DDNS	Support DynDNS, No-ip
Other Function	<ul style="list-style-type: none">· Support Virtual Server· Support Port Forwarding· Support DMZ Host· Support Upnp· Support IPV6· Tenda WiFi App· LED Control· Bandwidth Control· MAC address clone· Static Routing· System LogBackup Restore configurations· Firmware upgrade from local&online

Other Features

Temperature
Operating Temperature : 0 °C ~40 °C
Storage Temperature : -40°C ~70 °C

Humidity
Operating Humidity : 10 %~90% RH non-condensing
Storage Humidity : 5 %~ 90%RH non-condensing

Default Settings
192.168.0.1

Certification
CE, RoHS, FCC

EIRP Power(Max.)
2.400-2.4835 GHz:19.83dBm(EIRP)
5.150-5.250 GHz:22.98dBm(EIRP)

Package Content
Wireless Router*1
Ethernet Cable*1
Power Adapter*1
Installation Guide*1

SHENZHEN TENDA TECHNOLOGY CO.,LTD.

Tenda Technology Bldg.,Int' IE-City,
#1001 Zhong Shan Yuan Rd.,Nanshan District,Shenzhen China.

E-mail: support@tenda.com.cn
Tel: +86-755-2765 7098
Fax: +86-755-2765 7178
PC: 518055

