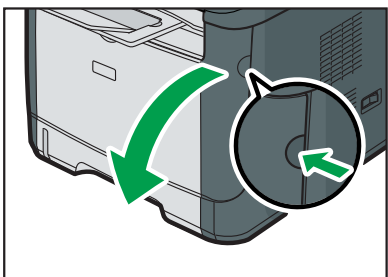




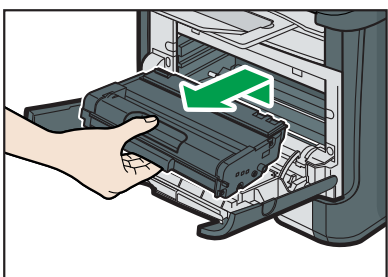
- Ha a karok nincsenek megfelelő helyzetben, emelje fel őket a helyes pozícióba.
- Jeśli dzwignie nie są w pozycji, podnieś je do tej pozycji.
- Eger kollar konumunda degilse, onlari bu konuma kaldirin.
- Если рычаги не в положении, поднимите их в указанное положение.

3

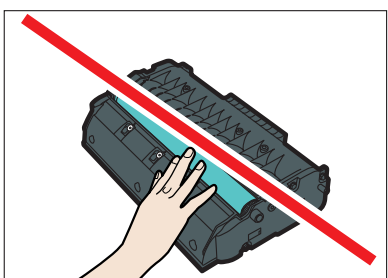


CVW023

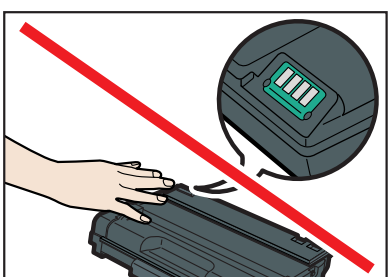
4



CVW024

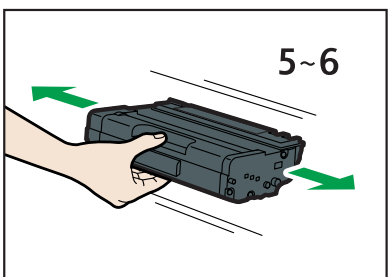


CMC013



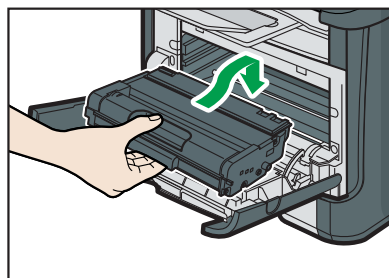
CMC014

5



CMC020

6



CVW028

7

Close the cover.  
Schließen Sie die Abdeckung.  
Fermez le capot.  
Chiudere lo sportello.  
Luk lågen.  
Cierre la tapa.  
Sluit de klep.  
Lukk dekslet.  
Feche a tampa.  
Feche a tampa.  
Sulje kansi.  
Stäng luckan.  
Zavřete kryt.  
Zárja vissza a fedelet.  
Zamknij pokrywę.  
Kapađi kapatın.  
Закройте крышку.

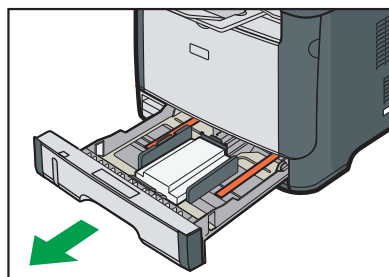
3

### Loading Paper

Einlegen von Papier  
Chargement du papier  
Caricamento della carta  
Ilægning af papir  
Papier plaatsen  
Colocar Papel  
Paperin lisääminen  
Vkládání papíru  
Csatlakozás  
Kağıt Yükleme

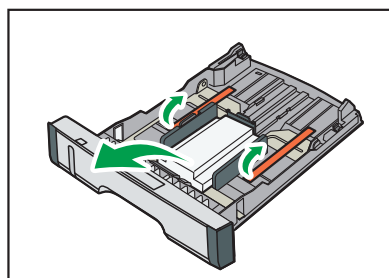
Carga de papel  
Fylle papir  
Colocar papel  
Fylla på papper  
Papír betöltése  
Ładowanie papieru  
Загрузка бумаги

1



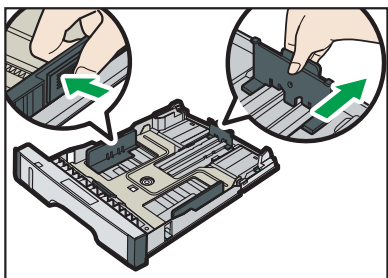
CVW523

2



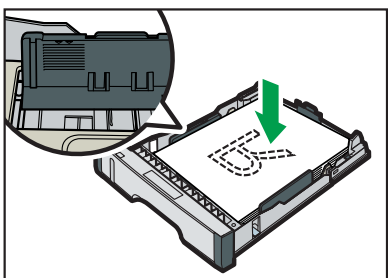
CVW519

3



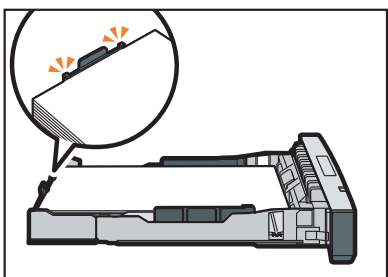
CVW522

4



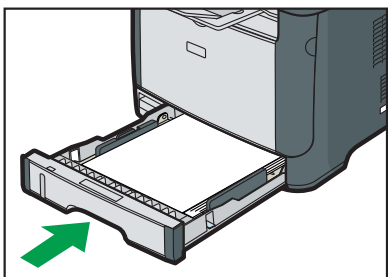
CVW047

5



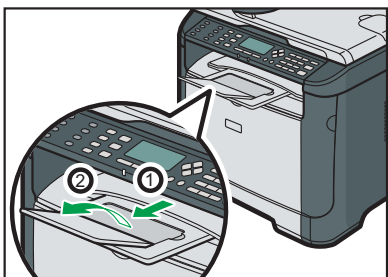
CVW033

5



CVW006

6

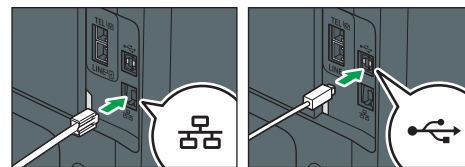


CVW507

## 4 Connection

Anschluss  
Conessione  
Conexión  
Tilkobling  
Conexão  
Anslutning  
Csatlakozás  
Bağlantı  
LAN

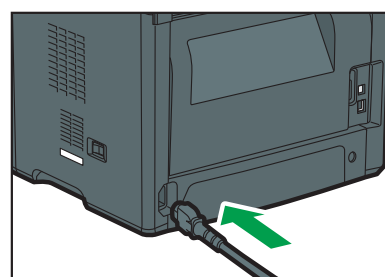
Connexion  
Tilslutning  
Verbinding  
Ligação  
Liitântä  
Připojení  
Podłączenie  
Подключение  
USB



## 5 Turning the Power On

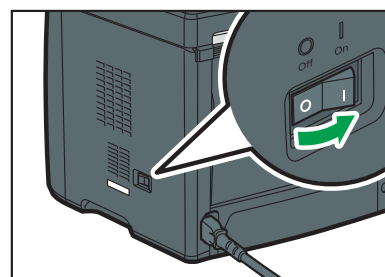
Einschalten des Geräts  
Mise sous tension  
Accensione  
Tilslutning af strømmen  
Encendido de la máquina  
Het apparaat aanzetten  
Slå på maskinen  
Ligar o equipamento  
Ligar o equipamento  
Virran kytkeminen  
Slå på strømmen  
Zapnutí zařízení  
A készülék bekapcsolása  
Włączanie zasilania  
Gücü Açma  
Включение питания

1



CVW510

2

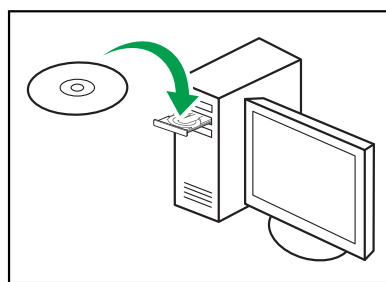


CVW511

## 6 Installing the Software

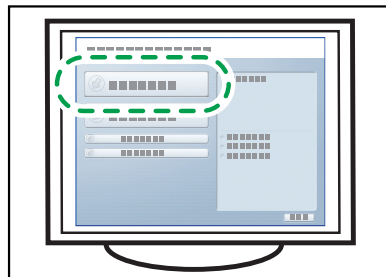
Installieren der Software  
Installation du logiciel  
Installare il software  
Installation af software  
De software installeren  
Instalare programvaren  
Instalar o Software  
Instalar o software  
Ohjelmiston asentaminen  
Installera programvaran  
Instalace softwaru  
Szoftver telepítése  
Instalacja oprogramowania  
Yazılımı Kurma  
Установка программного обеспечения

1



CFT052

Click [USB Quick Install] or [Network Quick Install].  
Klicken Sie auf [USB-Express-Installation] oder [Netzwerk-Express-Installation].  
Cliquez sur [Installation rapide USB] ou [Installation rapide réseau].  
Fare clic su [Installazione rapida USB] o [Installazione rapida di rete].  
Klik på [Lyninstallation med USB] eller [Lyninstallation via netværk].  
Pulse [Instalación rápida USB] o [Instalación rápida de red].  
Klik op [USB-snelinstallatie] of [Netwerksnelinstallatie].  
Klikk på [Hurtiginstallering av USB] eller [Hurtiginstallering av nettverk].  
Clique em [Instalação Rápida de USB] ou [Instalação Rápida de Rede].  
Clique em [Instalação rápida no padrão USB] ou [Instalação rápida em rede].  
Napsauta [USB-pika-asennus] tai [Verkkopika-asennus].  
Klicka på [Snabbinstallation för USB] eller [Snabbinstallation för nätverk].  
Klikněte na [Rychlá instalace USB] nebo na [Rychlá instalace síť].  
Kattintson az [USB gyors telepítés] vagy a [Hálózati gyors telepítés] lehetőségre.  
Kliknij [Szybka instalacja USB] lub [Szybka instalacja sieciowa].  
[USB Hızlı Kurulum] veya [Ağ Hızlı Kurulum]'a tıklayın.  
Нажмите [Быстрая установка через USB] или [Быстрая установка через сеть].

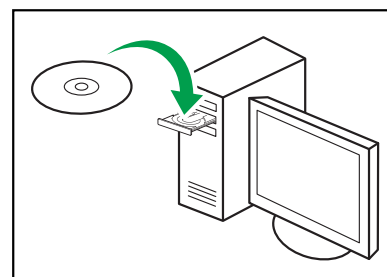


CTT059

## 7 Reading the manual

Lesen der Anleitung  
Lecture du manuel  
Leggere il manuale  
Læsning af vejledningen  
Cómo leer el manual  
De handleiding lezen  
Lese håndboken  
Ler o Manual  
Ler o manual  
Oppaan lukeminen  
Att läsa handboken  
Čtení příručky  
A kézikönyv olvasása  
Odczytywanie podręcznika  
Kilavuzu Okuma  
Чтение руководства

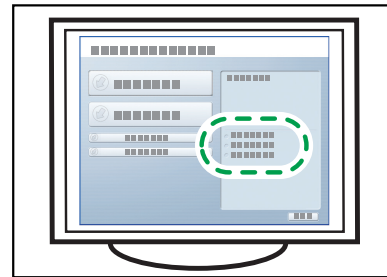
1



CFT102

2

Click [Browse This CD-ROM].  
Klicken Sie auf [Durchsuchen dieser CD-ROM].  
Cliquez sur [Parcourir ce CD-ROM].  
Fare clic su [Visualizza contenuti del CD-ROM].  
Klik på [Gennemse denne cd-rom].  
Haga clic en [Examinar este CD-ROM].  
Klik op [Deze CD-rom doorzoeken].  
Klikk på [Bla gjennom denne CD-ROM].  
Clique em [Pesquisar este CD-ROM].  
Clique em [Examine os conteúdos do CD-ROM].  
Valitse [Selaa tätä CD-levyä].  
Klicka på [Bläddra igenom denna CD].  
Klepněte na [Procházet tento disk CD-ROM].  
Kattintson a [Tallózás a CD lemezen] gombra.  
Kliknij polecenie [Przeglądaj dysk CD-ROM].  
[Bu CD-ROM a Gözetim]'a tıklayın.  
Нажмите [Просмотр данного CD-ROM].



CHL253

© 2013  
EN GB DE DE FR FR IT IT  
DA DK ES ES NL NL NO NO  
PT PT PT BR FI FI SV SE  
CS CZ HU HU PL PL TR TR  
RU RU M156-8601