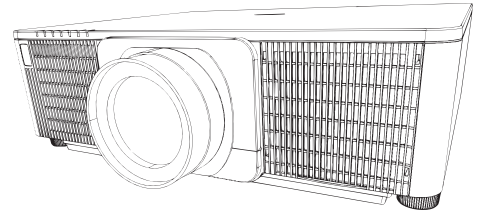


Projector

CP-X9110/CP-WX9210/CP-WU9410/CP-HD9320
CP-X9111/CP-WX9211/CP-WU9411/CP-HD9321

User's Manual Quick Setup Guide



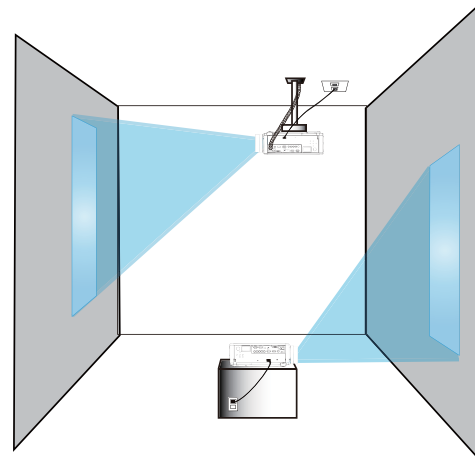
Thank you for purchasing this projector.

This manual is intended to explain only how to setup this product. For proper use of this product, please refer to this manual and the other manuals for this product.

Please follow this manual step by step for a quick installation.

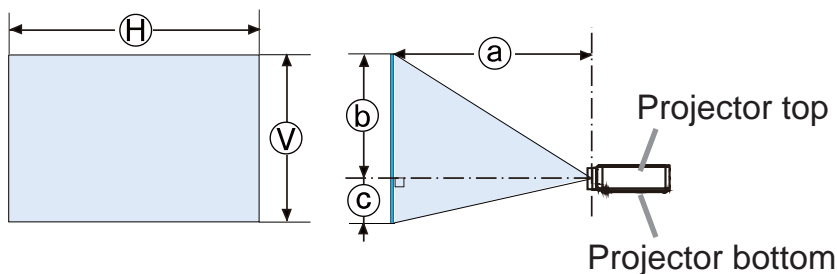
1 Setting up

Install the projector according to the environment and manner the projector will be used in.



2 Arrangement

Refer to tables **T-1** to **T-4** at the back of **User's Manual (concise)** as well as the following to determine the screen size and projection distance. The values shown in the table are calculated for a full size screen.



- Ⓜ × Ⓥ : Screen size
- ⓐ : Projection distance
(from the front of the projector unit)
- ⓑ , ⓒ : Screen height

3 Installing the lens unit

See the manual of the optional lens.

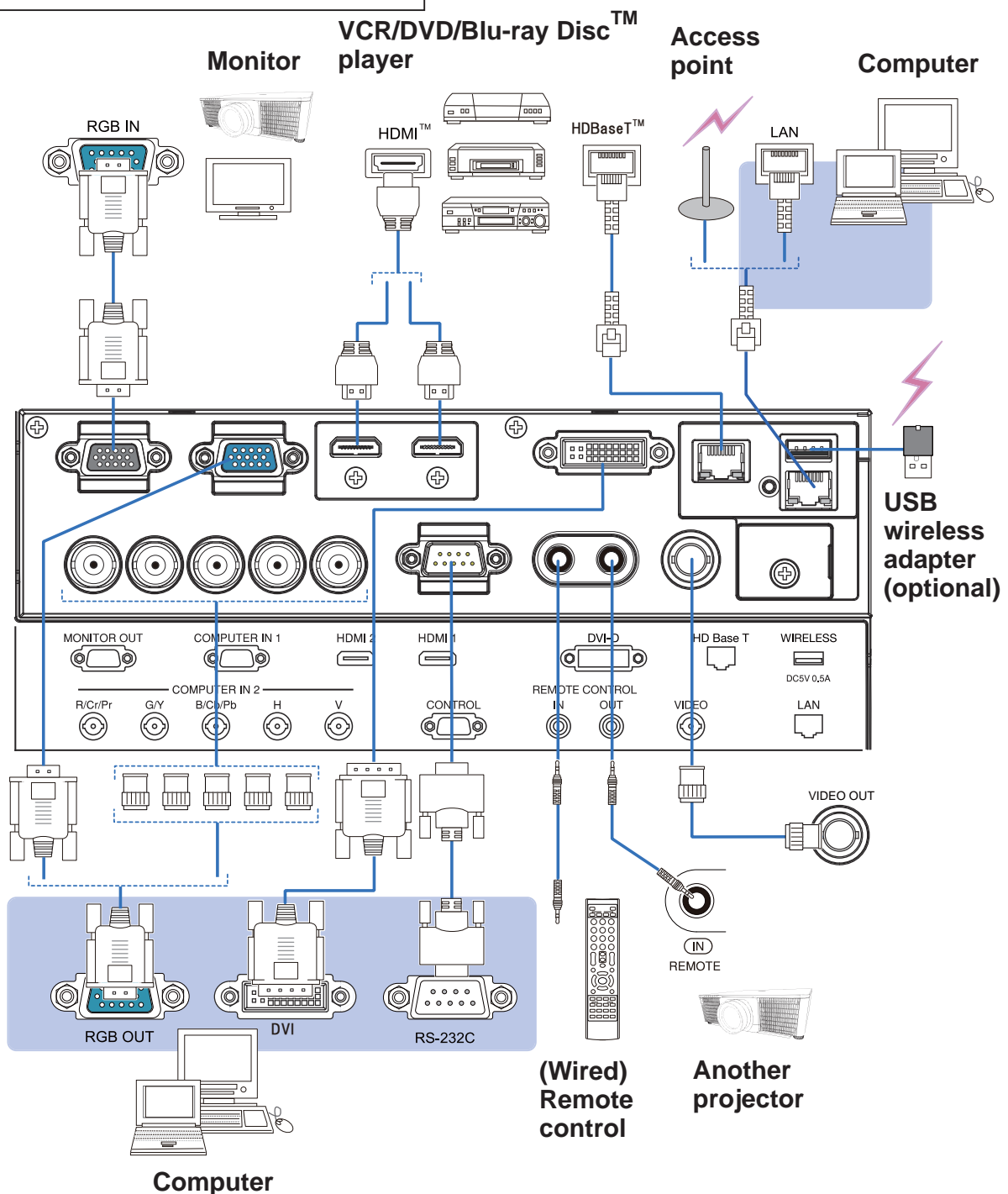
4 Connecting with your devices

Before connecting the projector to a device, consult the manual of the device to confirm that the device is suitable for connecting with this projector and prepare the required accessories, such as a cable in accord with the signal of the device. Consult your dealer when the required accessory did not come with the product or the accessory is damaged.

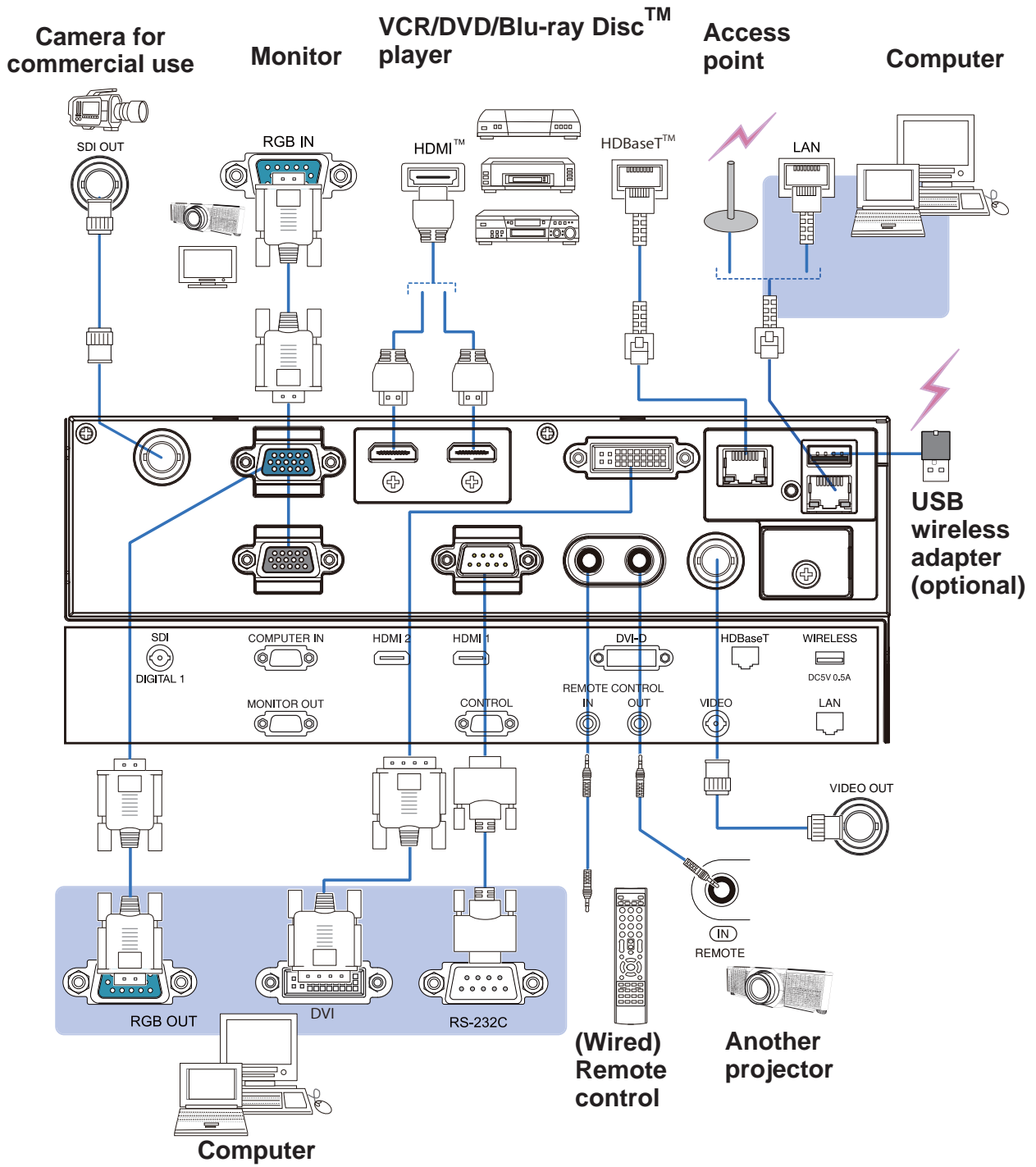
After making sure that the projector and the devices are turned off, perform the connection, according to the following instructions. Refer to the figures in subsequent pages.

Before connecting the projector to a network system, be sure to read User's Manual - Network Quick Setup Guide too.

CP-X9110/CP-WX9210/CP-WU9410
CP-X9111/CP-WX9211/CP-WU9411

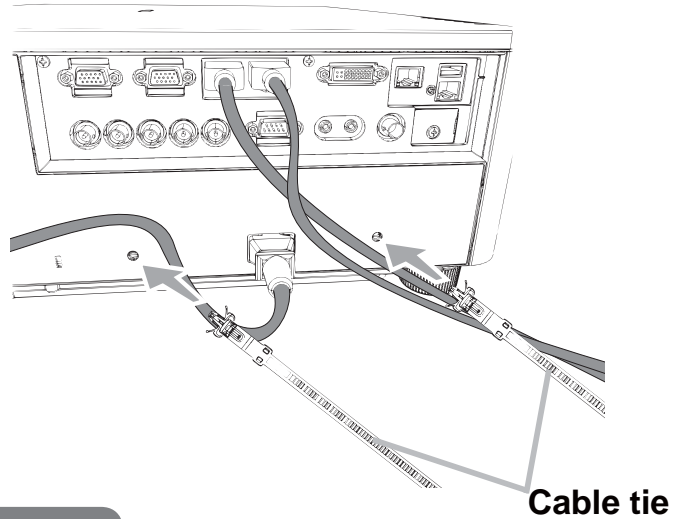


CP-HD9320/CP-HD9321



5 Fastening the cables

Use the supplied cable tie to fasten the cables.

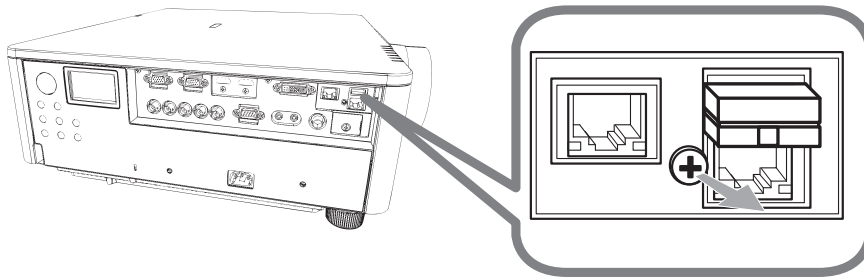


6 Fastening the adapter cover

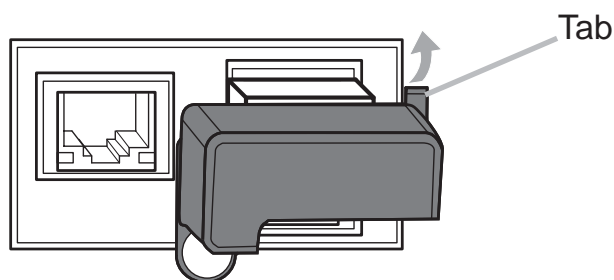
USB wireless adapter: USB-WL-11N

Temperature range: 0 ~ 45 °C (Operating)

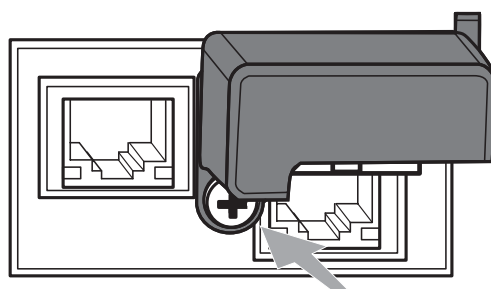
1. Loosen the screw (marked with triangle) on the bottom left of the **WIRELESS** port.



2. Insert the tab of the cover into the hole at the upper right of the **WIRELESS** port in the direction of the arrow.

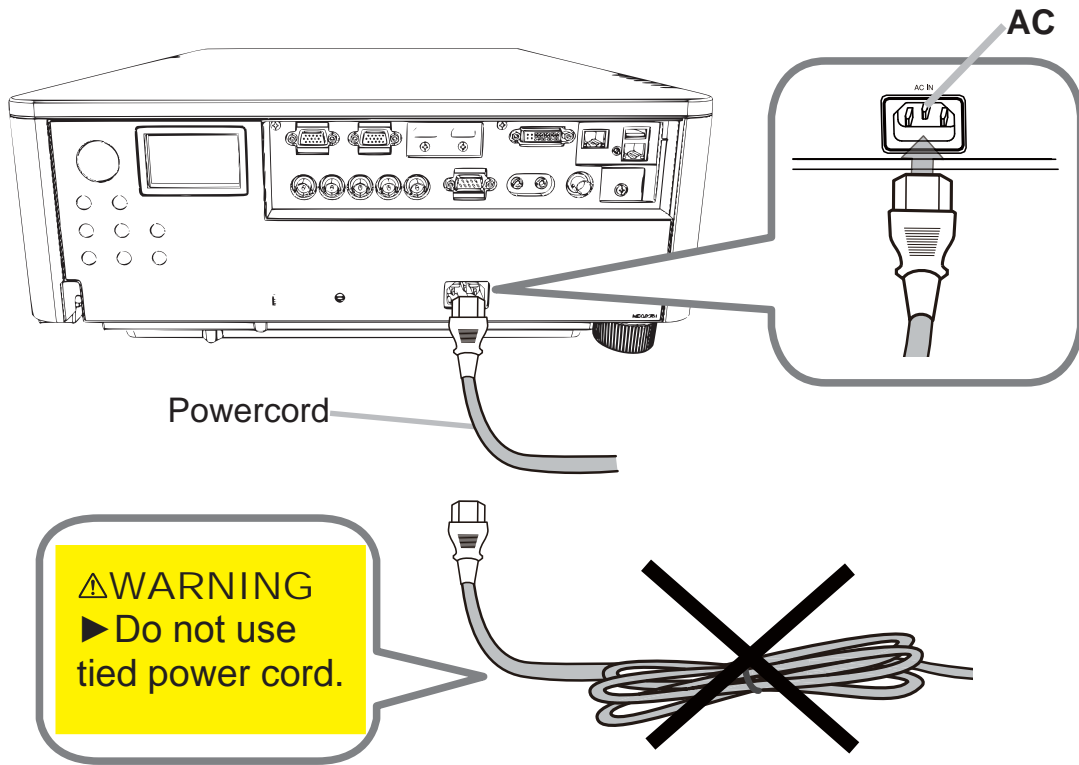


3. Align the screw holes on the projector and the cover. Then insert the screw removed from the projector into the hole and tighten the screw.



7 Connecting to a power supply

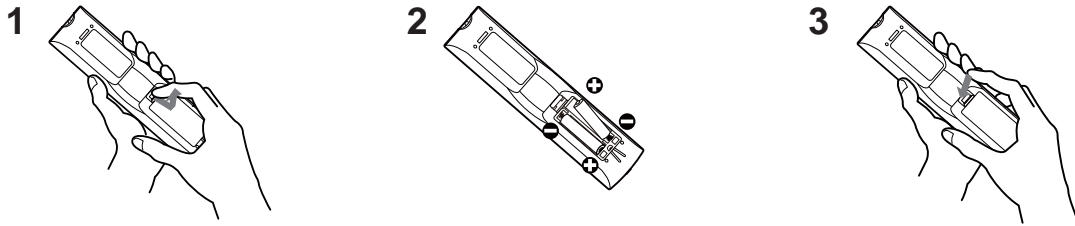
1. Insert the connector of the power cord into the **AC** (AC inlet) of the projector.
2. Firmly plug the power cord's plug into the outlet. In a couple of seconds after the power supply connection, the **POWER** indicator will light up in steady orange.



⚠️ WARNING ► Use the supplied power cable only.
► Do not use tied power cord.

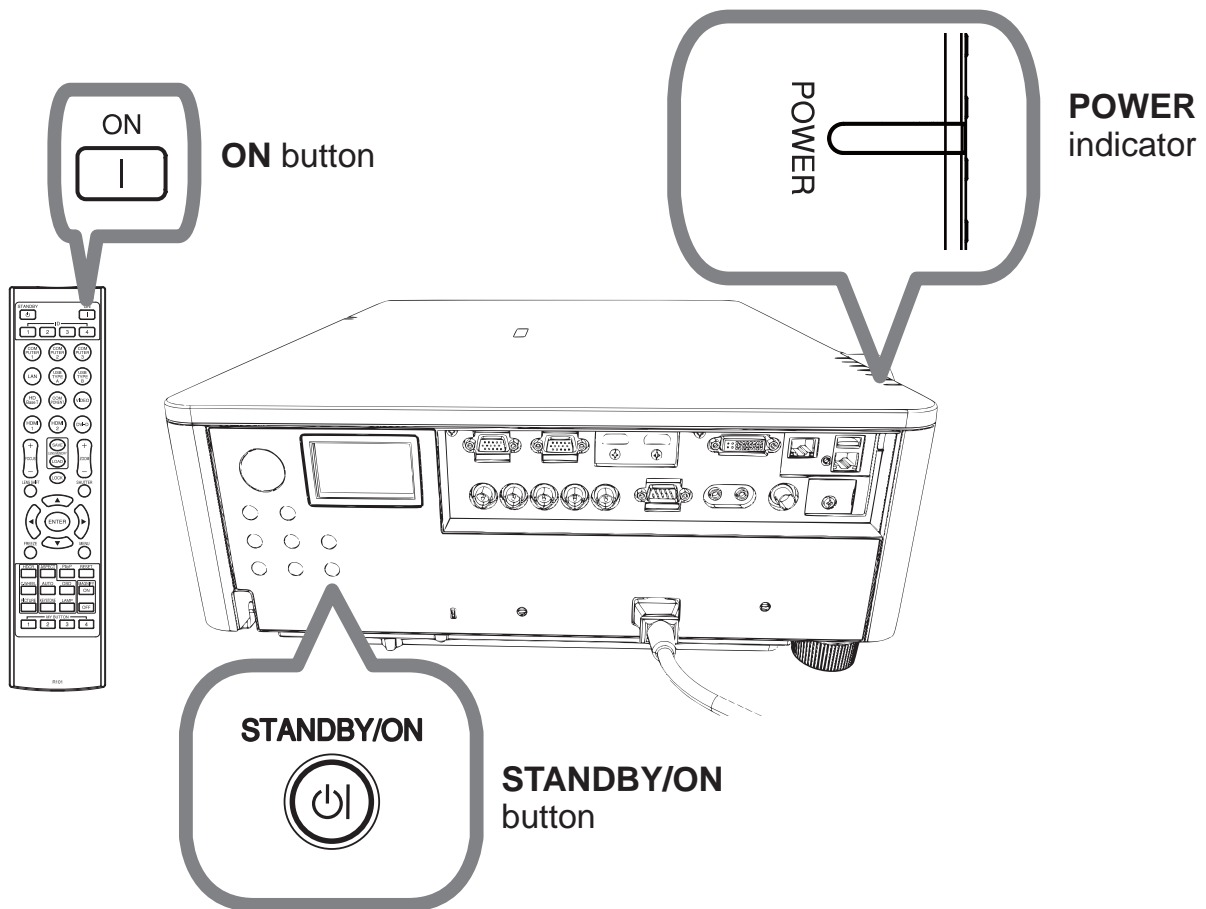
8 Installing the batteries

Please insert the batteries into the remote control before using it.



9 Turning on the power

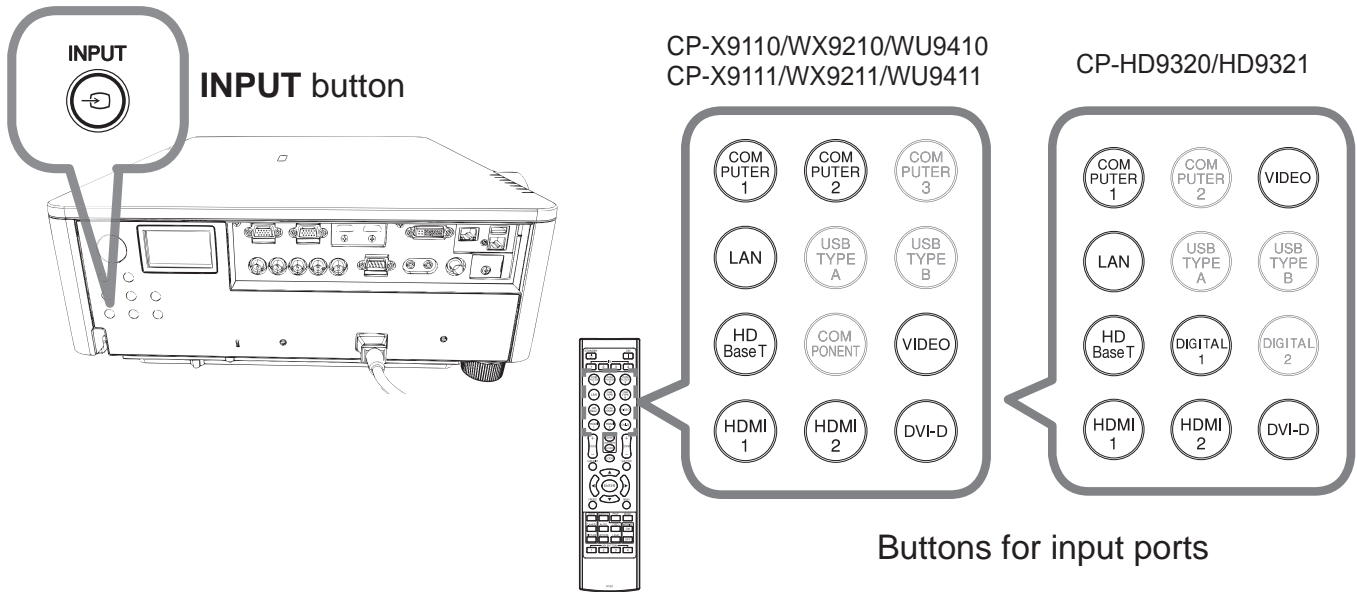
1. Make sure that the power cord is firmly and correctly connected to the projector and the outlet.
2. Make sure that the **POWER** indicator is lighted in steady orange.
3. Press **STANDBY/ON** button on the projector or the **ON** button on the remote control.



The projection lamp will light up and **POWER** indicator will begin blinking in green. When the power is completely on, the indicator will stop blinking and light in steady green.

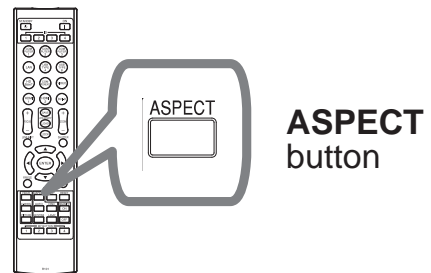
10 Selecting an input signal

Press the INPUT button of the projector or the input buttons of the remote control.



11 Selecting an aspect ratio

Press **ASPECT** button on the remote control.



12 Changing the display language

Please follow the on-screen display (OSD) for proper operation.

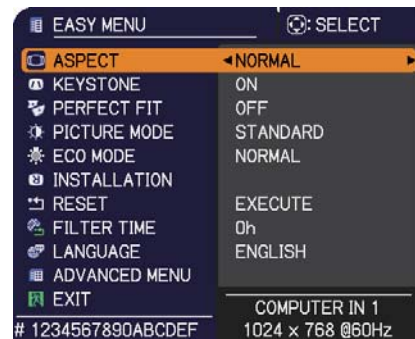
1. Press the MENU button on the remote control or the control panel of the projector.
2. From EASY MENU, select LANGUAGE. Then, select your desired language.

13 Using the menu function

1. To start the MENU, press the **MENU** button. The MENU you last used (EASY or ADVANCED) will appear. EASY MENU has priority to appear just after powered on.

2. In the EASY MENU

- (1) Use the ▲/▼ cursor buttons to select an item to operate. If you want to change it to the ADVANCED MENU, select the ADVANCED MENU.
- (2) Use the ◀/▶ cursor buttons to operate the item.



In the ADVANCED MENU

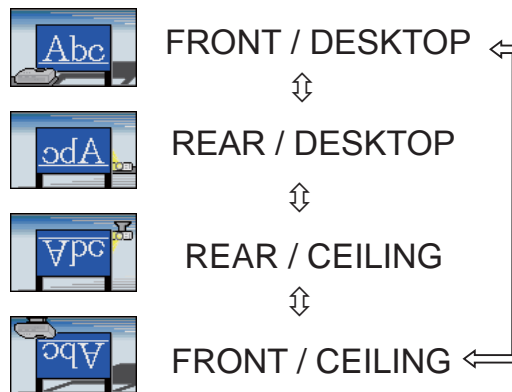
- (1) Use the ▲/▼ cursor buttons to select a menu. If you want to change it to the EASY MENU, select the EASY MENU. The items in the menu appear on the right side.
- (2) Press the ▶ cursor button or **ENTER** button to move the cursor to the right side. Then use the ▲/▼ cursor buttons to select an item to operate and press the ▶ cursor button or **ENTER** button to progress. The operation menu or dialog of the selected item will appear.
- (3) Use the buttons as instructed in the OSD to operate the item.



3. To close the MENU, press the **MENU** button again or select EXIT and press the ◀ cursor button or **ENTER** button. Even if you do not do anything, the dialog will automatically disappear after about 30 seconds.

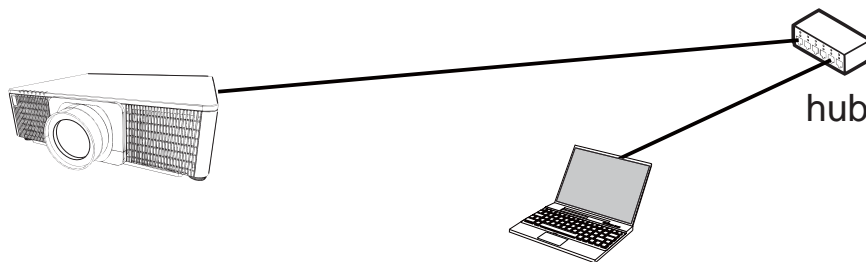
14 Changing the Installation settings

1. Press the MENU button, then follow below.
EASY MENU > ADVANCED MENU > SETUP > INSTALLATION
2. Choose according to your settings.



15 Connecting to the network

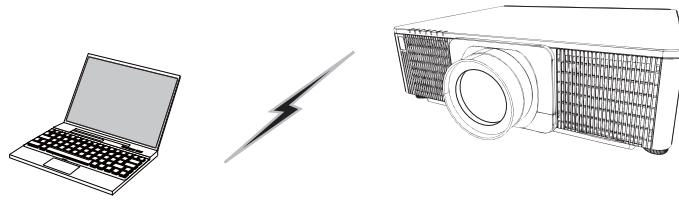
Wired or wireless connection is available for this projector.
For wired connection, use LAN cable to connect
(Refer to User's Manual - Network Quick Setup Guide too.)



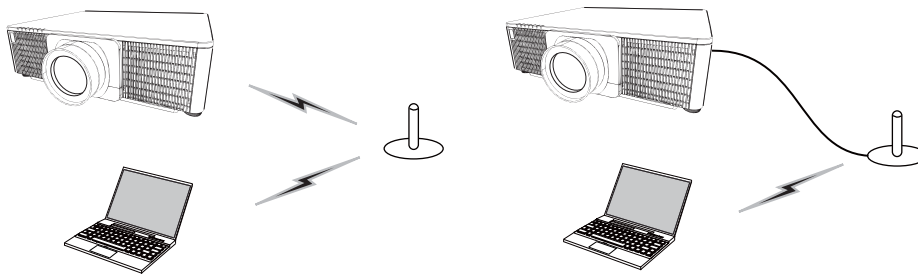
NOTE Before connecting to the network, contact the network administrator.

15 Connecting to the network (continued)

For wireless connection, use USB wireless adapter (USB-WL-11N).
(Refer to User's Manual - Network Quick Setup Guide too.)



Without an access point communication (Ad-Hoc)



With an access point communication (Infrastructure)

NOTE Before connecting to the network, contact the network administrator.

16 Web Control

Use Projector Web Control or Crestron e-Control to adjust or control the projector via a network from a web browser on a computer which is connected to the same network.

Enter the projector's IP address into URL input box of the Web browser as the example below, and then press the Enter key or  button.

Example: If the IP address of the projector is set to 192.168.1.10:

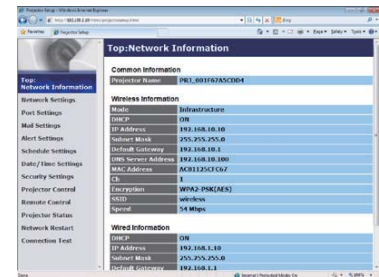
Enter "http://192.168.1.10/" into the address bar of the web browser and press the Enter key or click  button.

16 Web Control (continued)

■ Projector Web Control

Advanced controls are available on this web control. Logon with your user name and password.

User name	Administrator
Password	<blank>



■ Crestron e-Control

Basic controls are available on this web control.

CP-X9110/WX9210/WU9410
CP-X9111/WX9211/WU9411



CP-HD9320/HD9321



17 Using Instant Stack feature

This projector can be used with another projector of the same model to project an image on the same screen.

■ Instant Stack

Superimpose the image easily projected from the projectors.

■ Intellectual Stack and Simple Stack

Intellectual Stack - Two projectors are connected with RS-232C cable.

Simple Stack - Two projectors are not connected with RS-232C cable.

To use this feature, setup both projectors as shown below.

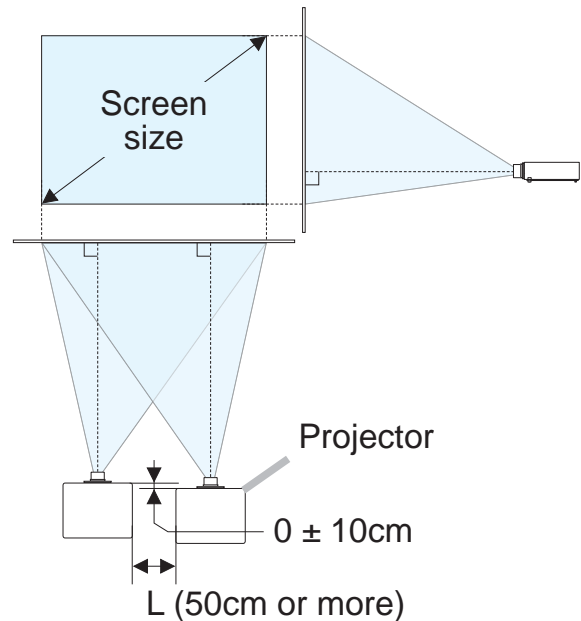
- STANDBY MODE in SETUP menu: NORMAL
(EASY MENU > ADVANCED MENU > SETUP > STANDBY MODE)
- COMMUNICATION TYPE under COMMUNICATION in SERVICE menu: OFF
(EASY MENU > ADVANCED MENU > OPTION > SERVICE)
- STACK LOCK in SECURITY menu: OFF
(EASY MENU > ADVANCED MENU > SECURITY > ENTER PASSWORD)

17 Using Instant Stack feature (continued)

Installation

Use the same model of projectors and install them side by side.

L: distance [cm]	Recommended screen size [inch]
50	270
75	330
100	390



Setting up the first projector (Set A)

1. Turn on Set **A**.
2. Perform the INSTALLATION setting first if necessary as it may change the image position. (📖8)
3. Adjust the image of Set **A** to fit the screen with the ZOOM, FOCUS and LENS SHIFT features.
Adjust the image position using KEYSTONE and PERFECT FIT if necessary.
EASY MENU \uparrow KEYSTONE
 \downarrow PERFECT FIT
EASY MENU > ADVANCED MENU > SETUP \uparrow KEYSTONE
 \downarrow PERFECT FIT
4. Display the menu with the **MENU** button.
5. Use the $\blacktriangle/\blacktriangledown/\blacktriangleleft/\blacktriangleright$ buttons to go into the following menu.
EASY MENU > ADVANCED MENU > OPTION > SERVICE > COMMUNICATION > STACK
STACK menu will appear on screen.
6. Select STACK MODE then SUB, and press the \blacktriangleright button twice to finish the settings.

17 Using Instant Stack feature (continued)

Setting up the second projector (Set B)

1. Turn on Set **B**.
2. Reset the adjustment of KEYSTONE and PERFECT FIT on Set **B**.
 EASY MENU ⏏ KEYSTONE
 ⏏ PERFECT FIT
 EASY MENU > ADVANCED MENU > SETUP ⏏ KEYSTONE
 ⏏ PERFECT FIT
3. Adjust the image size and position of Set **B** with the ZOOM, FOCUS and LENS SHIFT features such that the image can be superimposed well to the image of Set **A**.
4. Display the menu with the **MENU** button.
5. Use the ▲/▼/◀/▶ buttons to go into the following menu.
 EASY MENU > ADVANCED MENU > OPTION > SERVICE >
 COMMUNICATION > STACK
 STACK menu will appear on screen
6. Select STACK MODE then MAIN, and press the ► button twice to finish the settings.

For more details of setup and adjustments, please refer to the User's Manual (detailed).

18 Troubleshooting

Please check the following web address where you may find the latest information for this projector.

<http://www.hitachi-america.us/projectors>

<http://www.hitachiserviceeu.com/support/guides/userguides.htm>

NOTE

- The information in this manual is subject to change without notice.
- The illustrations in this manual are for illustrative purposes. They may differ slightly from your projector.
- The manufacturer assumes no responsibility for any errors that may appear in this manual.
- The reproduction, transfer or copy of all or any part of this document is not permitted without express written consent.