



Quick Start Guide

EN

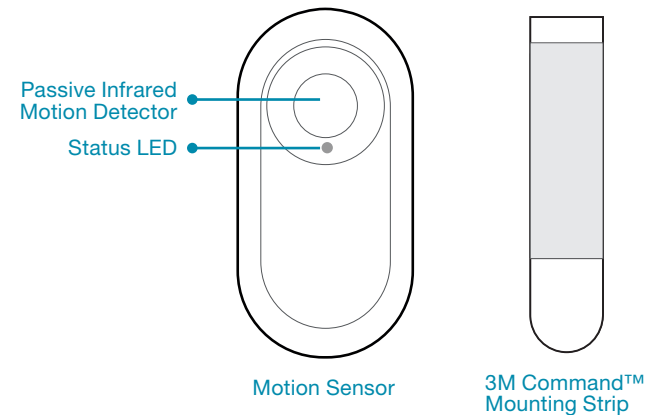


READ ME
FIRST

Motion Sensor

At a Glance

Thank you for choosing the **SwannOne™ Motion Sensor**. The **SwannOne Motion Sensor** detects movement in a surrounding area, triggering actions and alerting you on your smartphone when it's important.



Compliance Information

FCC Statement

This device complies with part 15 of the FCC Rules. Operation is subject to the following two conditions: (1) This device may not cause harmful interference, and (2) This device must accept any interference received, including interference that may cause undesired operation.

Disposal and Recycling Information

Correct Disposal of this product. This marking indicates that this product should not be disposed with other household wastes throughout the EU. To prevent possible harm to the environment or human health from uncontrolled waste disposal, recycle it responsibly to promote the sustainable reuse of material resources. To return your used device, please use the return and collection systems or contact the retailer where the product was purchased. They can take this product for environment safe recycling.

Battery Safety Information

CAUTION: KEEP BATTERIES AWAY FROM SMALL CHILDREN. RISK OF EXPLOSION IF BATTERY IS REPLACED BY AN INCORRECT TYPE. DISPOSE OF USED BATTERIES PROMPTLY IN ACCORDANCE WITH LOCAL REGULATIONS.

Discover More SwannOne Smart Home Solutions

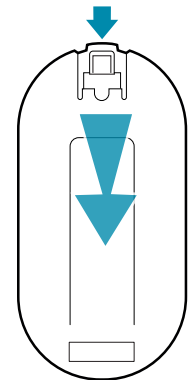


© Swann Communications 2016

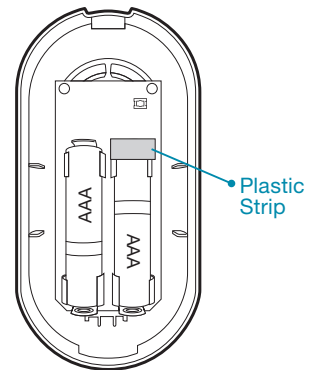
QSGMS170316E

1 Activate Sensor

- 1 Open the motion sensor by pushing back the release catch on top and lifting off the rear panel.

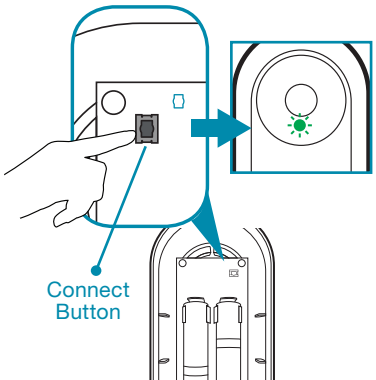


- 2 Remove the protective plastic strip to engage the battery and activate the motion sensor.



2 Pair Sensor

- 1 Sign in to your SwannOne account at home.swannone.com.
- 2 From your web account dashboard, go to [My Settings > Motion Sensors](#) and add a device.
- 3 When the Setup page appears, put your Smart Hub in pairing mode by selecting [Learn devices](#).
- 4 Press the [Connect](#) button on the motion sensor. The status LED blinks once. When pairing is complete, the status LED blinks twice. Check the Setup page to confirm the motion sensor has paired successfully, and then finish the setup process by following the on-screen instructions.

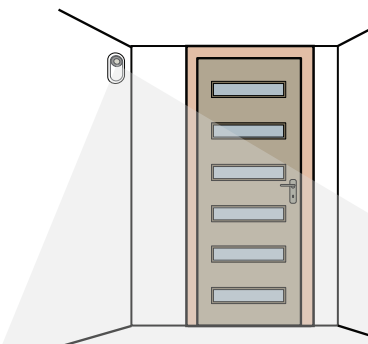


i If the sensor is not connecting as expected, perform a sensor reset by pressing and holding the **Connect** button until the status LED blinks rapidly, and then try pairing the sensor again.

3 Mount Sensor

Place Motion Sensor around your home as required with the included Command™ Strip.

- 1 Before applying the Command™ Strip, clean the surface where the Motion Sensor will be mounted, and make sure it is dry.
- 2 Fit the Motion Sensor with the Command™ Strip, and then press the Motion Sensor firmly onto surface for 30 seconds.
- 3 Test the Motion Sensor by walking in front of it. The Status LED blinks whenever movement is detected. You should also receive a status alert via the SwannOne web dashboard and app on your smartphone.



Placement Example

i Don't place the sensor near heat or cold producing devices such as heaters, air conditioners, or lamps as they may cause false triggers.

Need Help?

Get more information regarding the setup and use of your product on the web at swannone.com, or contact our multi-lingual support team anytime via:



USA & Canada 1800 627 2799

UK & Europe 0808 168 9031

Australia 1800 788 210

New Zealand 0800 479 266



support@swannone.com

SwannOne Warranty

SwannOne products are backed by a full 12 month guarantee from the date of purchase. In the unlikely event of anything going wrong, you can have confidence that your purchase is protected. Refer to swannone.com for terms and conditions.