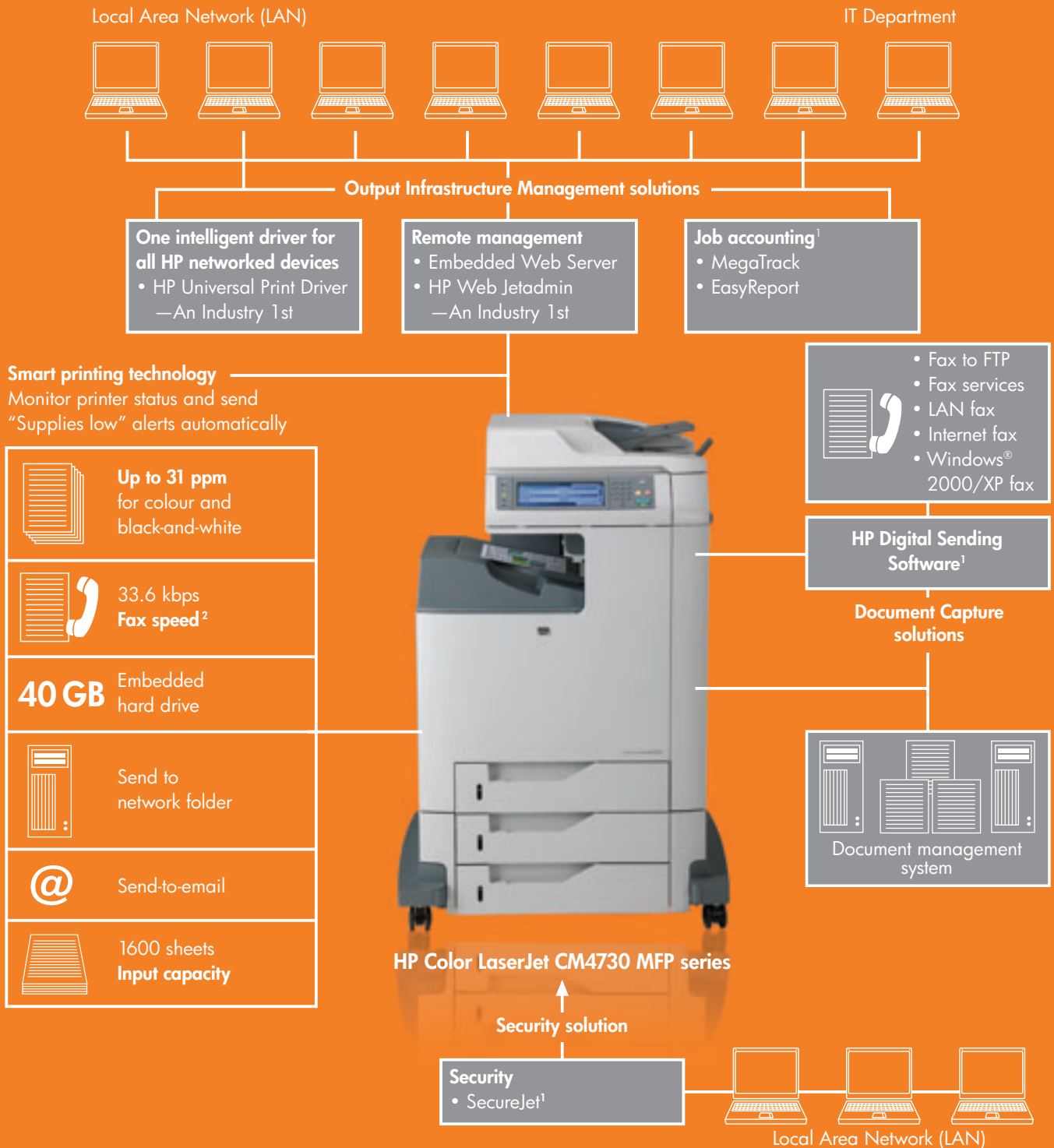




## HP Color LaserJet CM4730 MFP series

Colour as fast and affordable as black-and-white.

Take your productivity to a whole new level and watch it soar. With the HP Color LaserJet CM4730 MFP series, integrating print, copy, scan and fax functions into one reliable design, you get a convenient multifunction that is affordable enough to place in every workgroup.



### HP Services<sup>3</sup>



#### Basic

**Support services**  
For businesses of all sizes



#### Advanced

**Smart Print Services**  
Standardised, configurable, scalable services with predictable monthly payments



#### Superior

**Managed Print Services**  
Fully customisable, comprehensive, scalable portfolio of services that allows you to optimise your imaging and printing environment



<sup>1</sup> Optional software.

<sup>2</sup> Optional for HP Color LaserJet CM4730 MFP.

<sup>3</sup> Optional. See [www.hp.com/support](http://www.hp.com/support) for extended options.

# Superior performance with outstanding usability and productivity tools

## Radically simple control panel

Navigate through your print jobs with the award-winning<sup>1</sup> HP Easy Select Control Panel. A ten-inch VGA colour touch-screen with Windows icons and customisable settings makes this device easy to use. Plus, a new "Job Status" function allows administrators and authorised users to manage print jobs in the queue. The built-in "Help" system also provides useful information for each screen.

## Zip through print jobs

Save valuable time with print and copy speeds of up to 31 pages-per-minute (ppm) for black-and-white and colour documents up to legal-size. Moreover, fast, effective faxing and scanning to email and folder functions make this MFP ideal for multiple workflows and demanding workgroups.<sup>2</sup> What's more, this MFP is compact enough to be placed anywhere in the office.

## Network for less work

HP Web Jetadmin equips you with print management tools to install, monitor, troubleshoot and manage fleets of devices and peripherals from anywhere on the network. And with the HP Embedded Web Server, it allows you to manage MFP functions from your computer instead of from the printer control panel. These powerful tools provide all the fleet management capabilities you need to manage your printing and imaging environment more efficiently.

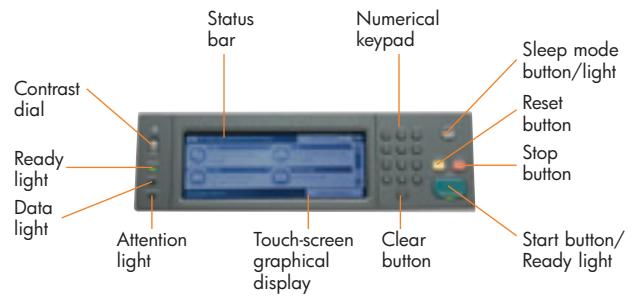
## Enhanced device management with productivity tools

The touch-screen control panel of the HP Color LaserJet CM4730 MFP series is designed for simple and user-friendly navigation and troubleshooting. You can rely on its clear display of available applications to help you navigate, intuitive interface to visually walk you through troubleshooting, and installation wizards to assist with setup. These self-help features are also available in a variety of Asian languages<sup>4</sup>: Traditional Chinese, Simplified Chinese, Korean and Japanese.

## Exceptional quality and performance

From toner to printer, HP products are designed together to work for optimum output and reliability. With Original HP printing supplies, getting reliable results when you print in colour is just as easy as printing in black-and-white. When you use HP papers, HP Color LaserJet Print Cartridges with ColorSphere toner together with the HP Color LaserJet CM4730 MFP series, they ensure hassle-free printing, optimal printer performance and professional quality documents page after page.

## Award-winning control panel designed for productivity

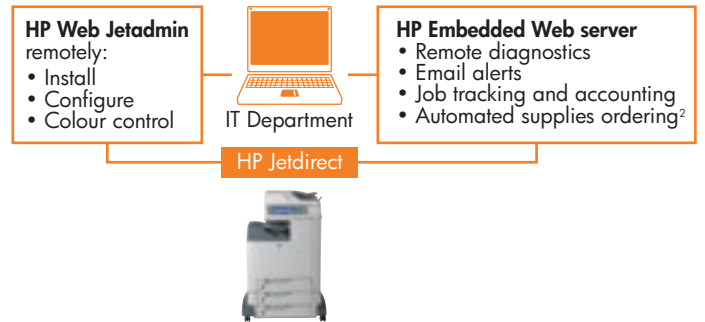


## Print and copy



Up to 31 pages-per-minute for colour and black-and-white

## Get efficient with HP Jetdirect embedded networking



**ColorSphere**  
HP TONERS

Professional results every time.



<sup>1</sup> Buyer's Lab gave HP a "Pick of the Year" award in December 2006 for "Outstanding Achievement for the User Interface Design of its Multifunction Printers".

<sup>2</sup> Standard features vary according to model. For more information, see "Series at a glance".

<sup>3</sup> Using genuine HP supplies ensures availability of all HP printing features.

<sup>4</sup> Please check with your local HP office for availability.

# Exceptional functionality

## Easy versatility

The 100-sheet multipurpose tray and three 500-sheet input trays (for different paper types) give you a total input capacity of 1600 sheets. That is more than enough space to keep you from having to constantly reload papers.

## Built for productivity

Enjoy the convenience of an optional 500-sheet stapler/stacker that staples up to 30 pages, or an optional 700-sheet 3-bin mailbox that smoothly assigns print, copy and fax output to different mailboxes, or assigns users to easy tray.

## Full-speed, two-sided printing and copying

The high-quality colour scanner delivers up to 600 x 600 dpi resolution for high image quality and accuracy while the automatic document feeder (ADF) provides easy, two-sided copying and scanning benefits without having to manually feed in each original.

## Enhanced workflow for greater efficiency

This MFP series includes embedded scanning functionality that allows you to scan to e-mail and scan to folder. Optional HP Digital Sending Software facilitates document workflow and enhances business communications by enabling sending to FTP sites, network folders, and fax services, including LAN fax, Internet fax and Windows fax services. It also features OCR and Metadata functions.

## Minimal user intervention



## Professional results



600 x 600 dpi resolution

two-sided print, copy and scan

## Streamline workflow and improve productivity



# Balance your budget and printing needs

## Colour as affordable as black-and-white

The HP Color LaserJet CM4730 MFP series not only deliver the functionality your workgroups use at an economical price. Additionally, the HP Color LaserJet CM4730 MFP also offers colour printing as affordable as black-and-white.

## Manage colour printing to minimise costs

With HP Color Access Control, you can protect your investment by deciding exactly when and who should use colour. This ensures that colour is available for the people who truly need to leverage its power—such as your sales team and marketing department—while others automatically default to black-and-white printing.

## Achieve professional results with every print

Smart printing supplies<sup>2</sup> communicate with your device to optimise and calibrate output quality, monitor print jobs and supplies levels. These features ensure consistently high quality documents over the life of the printing system, and notify you when supplies are low so you will not run out of toner in the middle of a critical print job.

## Manage cost by controlling colour usage



<sup>1</sup> Optional software sold separately.

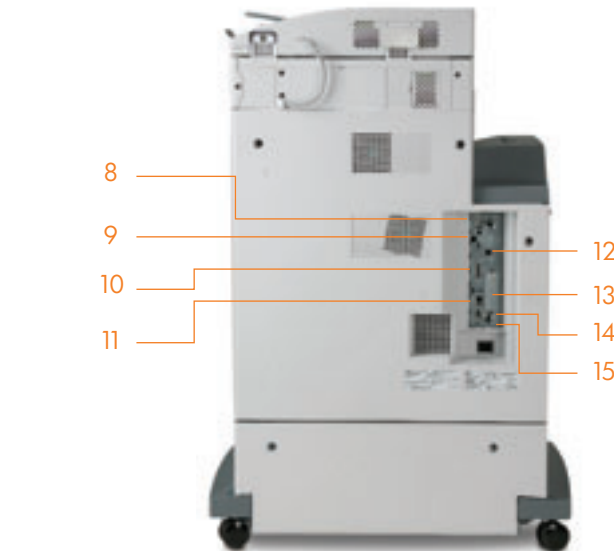
<sup>2</sup> Using genuine HP supplies ensures availability of all HP printing features.

# HP Color LaserJet CM4730 MFP series


- 1 100-sheet multipurpose tray handles heavy custom media up to 220 g/m<sup>2</sup> (58 lb bond)
- 2 Side door allows convenient access to four, all-in-one HP print cartridges
- 3 50-sheet ADF scanner processes two-sided documents at full speed
- 4 Easy-to-use touch-screen control panel with 10-key number pad provides effortless interaction with the MFP
- 5 Optional 500-sheet stapler/stacker staples up to 30 sheets for instant reports or presentations
- 6 Full-speed, automatic two-sided printing
- 7 Three adjustable 500-sheet input trays support paper up to 120 g/m<sup>2</sup> (32 lb bond)
- 8 Foreign interface harness for third-party paper-handling solutions
- 9 Host and device Hi-speed USB 2.0 ports
- 10 IEEE-1284 C parallel port
- 11 HP Jetdirect Fast Ethernet embedded print server
- 12 RJ-11 fax port
- 13 One open EIO slot to add even more functionality, including Apple networking
- 14 40 GB HP high-performance embedded hard disk
- 15 320 MB total memory quickly and easily handles complex print jobs



HP Color LaserJet CM4730 MFP series with optional stapler/stacker



## Maximise the performance of your investment with HP accessories (Optional)

 <b>Stapler/stacker</b> staples documents up to 30 pages and stacks up to 500 sheets	 <b>700-sheet 3-bin mailbox</b> may be assigned to individuals or device functions (to sort by print, copy or fax jobs)
 <b>HP LaserJet Analog Fax Accessory 300</b> quickly and securely processes fax documents	 <b>Additional memory</b> — Add up to 512 MB of RAM for complex graphics printing
 <b>HP Digital Sending Software</b> lets you digitally capture, route, and store paper-based documentation	 <b>HP bt1300 Bluetooth<sup>®</sup> Wireless Printer Adapter<sup>1</sup></b> provides easy, walk-up printing from your mobile phone or PDA
 <b>HP Jetdirect 625n Gigabit Ethernet Internal print server</b> increases network bandwidth to gigabit speeds	 <b>HP Jetdirect 620n Fast Ethernet internal print server</b> for increased speed and saving time
 <b>HP Jetdirect en3700 Fast Ethernet external print server (USB 2.0)</b> provides network and Internet connectivity for up to 3 network-capable printers for simple, reliable network printing	 <b>HP Jetdirect 635n IPv6/IPsec and Gigabit Ethernet internal print server</b> for faster speeds and the latest in network security

## Series at a glance



HP Color LaserJet CM4730 MFP

- 100-sheet multipurpose tray and three 500-sheet input trays for 1600-sheet capacity
- 500-sheet output bin



HP Color LaserJet CM4730f MFP

- 100-sheet multipurpose tray and three 500-sheet input trays for 1600-sheet capacity
- 500-sheet output bin
- HP LaserJet MFP Analog Fax Accessory 300

<sup>1</sup> For more information and a list of supported phones and other devices, go to [www.hp.com/support/bluetoothprinteradapter](http://www.hp.com/support/bluetoothprinteradapter).

# Helping you get even more from your MFP

—solutions to enhance productivity and performance

## Output Infrastructure Management solutions

**HP Web Jetadmin—An Industry 1st that celebrates its 10th year helping customers in IT management**—provides innovative features like drag-and-drop capability, right-click functions, single sign-on, a brand new task-based interface and device discovery based upon “Active Directory” are all designed to help you manage your printer fleet with ease. Furthermore, it combines more efficient fleet management, easy upgrade from 8.x and smooth integration with existing enterprise management applications and Windows Vista™ operating system. For more information, go to [www.hp.com/go/webjetadmin](http://www.hp.com/go/webjetadmin)

**HP Universal Print Driver—An Industry 1st**—is an award-winning<sup>1</sup> solution that relieves administrative hassles with a single, intelligent driver for all HP networked devices. It is also fully compatible with Windows Vista™. With Windows Vista™, IT managers migrating to Windows Vista™ can easily test, qualify and standardise their users' PCs with a single driver instead of managing hundreds of different drivers. Available in your choice of HP PCL5, HP PCL6 or HP postscript emulation. For more information, go to [www.hp.com/go/upd](http://www.hp.com/go/upd)

**MegaTrack In Printer Agent (MIPA)** gives your business the ability to record and monitor printer and MFP activity directly at the device, providing a precise accounting of printing functions. It can also be used to track copying, faxing and scan-to-email functions.

**EasyReport** is an affordable solution that helps you efficiently manage and control your HP LaserJet printers and MFPs by monitoring each printer's output in real time. With this functionality, you can easily track copying, faxing and email jobs done on HP MFPs. Plus, it is easy to install, set up and use, with graphical report generation for analysis and planning.

## Security solution

**SecureJet** offers you greater control over the security of your printed documents. It helps you secure sensitive print jobs against hacking during LAN transmission and authenticate users to ensure that only the right person gets the print job. It also lets you retrieve jobs from any SecureJet-enabled printer.

## Document Capture solution

**HP Digital Sending Software** allows you to authenticate users at device level—and send documents to email, folders, ftp, LAN-fax, printer or document OCR. For more information, go to [www.hp.com/go/digitalsending](http://www.hp.com/go/digitalsending)

## HP Web Jetadmin

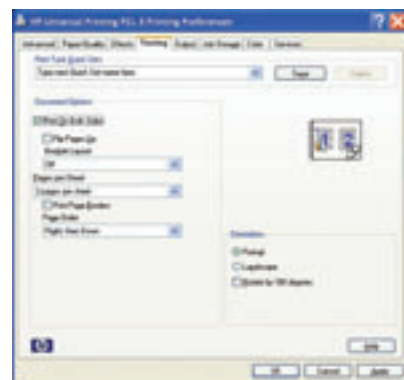
From standard web browser:

- Track usage by user
- Install firmware
- Configure device
- Conduct remote diagnostics
- Organise devices



## HP Universal Print Driver

— One intelligent driver for all HP devices



**Technological Innovation Award by Industry Analysts, Inc. for HP Universal Print Driver<sup>1</sup>**



<sup>1</sup> Awarded the Technological Innovation Award, 2006 Industry Analysts, Inc., Industry Analysts Technical Servicing Division.

# HP award-winning service and support

—ensuring low total cost of ownership and peace of mind

HP's wide spectrum of Print Services offers you several efficient, flexible and cost-effective ways to manage output. Designed to be both affordable as well as fully scalable, these services range from assessment and strategy to complete outsourced management.



## Support services



### Hardware repair services for HP printer products. Billed up front including:

- On-site
- Exchange
- Installation
- Technical phone support

### When you need:

Reliable hardware repair service and access to technical phone support only.

### It includes:

- Hardware repair

## Smart Print Services



A simple contract in a single, monthly invoice includes printers, supplies and support services based on actual device usage.

### When you need:

A hassle-free acquisition method, monthly payment, simple contract with printers, supplies, and repair service.

### It includes:

- Hardware repair
- Supplies replenishment
- Choice of Single Function & Multifunction printers
- Leasing
- Maintenance kits
- Remote monitoring

## Managed Print Services



A comprehensive, scalable portfolio of services that can be easily customised to meet your specific requirements for an output strategy.

### When you need:

Maximisation of your IT resources, cost control and optimisation of your output infrastructure.

### It includes:

- Assessment and design services
- On-site management services
- Deployment services
- Flexible payment models
- Choice of Single Function & Multifunction printers
- Supplies replenishment
- Remote monitoring

**Excellent durability and reliability**—HP has consistently received the top grade in PC Magazine Readers' Choice Award for service and reliability 14 years in a row<sup>1</sup>.

That's the kind of assurance you get with HP Printers.

<sup>1</sup> September 2005 PC Magazine Annual Reader Satisfaction Survey.



September 20, 2005  
OVERALL PRINTERS  
Hewlett-Packard company

PC Magazine Readers' Choice Award for service and reliability for 14 years in a row.

PC Magazine Readers' Choice Award Logo is a trademark of Ziff Davis Publishing Holdings Inc. Used under license.

# HP Color LaserJet CM4730 MFP series

## Technical specifications



HP Color LaserJet CM4730 MFP



HP Color LaserJet CM4730f MFP

<b>Print and copy speed<sup>1</sup></b>	Up to 30 ppm legal black-and-white, up to 30 ppm A4 (31 ppm letter) colour and black-and-white
<b>First page out</b>	
Copying Printing	Less than 10 seconds letter (11 seconds A4), Ready; less than 17.5 seconds letter and A4, Powersave Less than 10 seconds letter (11 seconds A4), Ready; less than 17.5 seconds letter and A4, Powersave
<b>Resolution</b>	
Printing Copying Scanning	600 x 600 dpi, with HP ImageREt 3600 Up to 600 x 600 dpi, 30 bit depth Up to 600 x 600 dpi 30 bit (flatbed), up to 600 x 300 dpi 30 bit (ADF)
<b>Features</b>	
Scanning Copying Faxing	Colour flatbed scanner or ADF; scan input modes: copy, email, fax, secondary email, folder, workflow Up to 999 copies, reduce or enlarge from 25 to 400% (from scanner glass), 25 to 200% (from ADF) CM4730: Optional via HP LaserJet MFP Analog Fax Accessory 300 CM4730f: Up to 33.6 kbps; JBIG compression, fax forwarding, fax polling, broadcasting to up to 100 locations, speed dial (up to 100 numbers), auto fax reduction, and auto redialing supported
Digital sending features <sup>2</sup>	Via optional HP Digital Sending Software: secondary email, send-to-folder, send-to-workflow, authentication, digital fax (send-to-LAN, Windows 2000, Internet); up to 31 ppm; formats: PDF, JPEG, TIFF, MTIFF
<b>Processor</b>	533 MHz RISC
<b>Memory</b>	448 MB: 384 MB RAM and 64 MB fixed memory. Expandable to 576 MB RAM through one available DIMM slot; two available flash memory slots for font cards or third party solutions
<b>Storage</b>	40 GB HP high-performance embedded
<b>Recommended monthly print volume<sup>3</sup></b>	5,000 to 9,000 pages
<b>Duty cycle<sup>4</sup></b>	Up to 175,000 pages
<b>Paper</b>	
Paper handling Output Sizes	100-sheet multipurpose tray 1; 500-sheet input trays 2, 3, 4; 50-sheet ADF, standard automatic two-sided printing 500-sheet face-down output bin Multipurpose tray: 76 x 127 mm (3 x 5 inches) to 216 x 356 mm (8.5 x 14 inches); letter, legal, statement, executive, A4, A5, B5 (JIS), executive (JIS), DPostcard (JIS), 16k, envelopes (No. 10, commercial, C5, DL, B5); 500-sheet input trays: 148 x 210 mm (5.8 x 8.3 inches) to 216 x 356 mm (8.5 x 14 inches); letter, legal, executive, A4, A5, B5 (JIS); custom sizes not supported for automatic two-sided printing, optional 3-bin mailbox, and stapling with the optional stapler/stacker
Weights	Multipurpose tray: 60 to 220 g/m <sup>2</sup> bond (16 to 58 lb); Automatic two-sided printing unit, 500-sheet input trays, optional 3-bin mailbox, stapling with the optional stapler/stacker: 60 to 120 g/m <sup>2</sup> (16 to 32 lb bond)
Types	Paper (plain, preprinted, letterhead, prepunched, bond, recycled, colour, light, intermediate, heavy, extra heavy, rough, glossy, heavy glossy, tough), transparencies, labels, envelopes, card stock
<b>Connectivity</b>	
Interfaces	Bidirectional IEEE-1284-C parallel port, Hi-Speed USB 2.0 port, HP Jetdirect Fast Ethernet embedded print server; one open EIO slot, foreign interface harness, Host USB accessory port, HP Jetdirect Fast Ethernet Embedded Print Server
Fax interface	Optional RJ-11 fax port
Languages	HP PCL6, HP PCL5c, HP postscript level 3 emulation, direct PDF printing (v 1.4), PML (Printer Management Language)
Fonts	80 internal TrueType fonts scalable in HP PCL and HP postscript level 3 emulation; additional font solutions available via flash memory
Client operating systems	Windows Vista x86, Vista x64, 2000, XP x86, Windows Server 2003 x86, Windows Server 2003 x64, XP x64; Mac OS 10.2 and up
Networking operating systems	Microsoft Windows Vista Compatible, Vista Premium, XP, Server 2003, XP, 2003 64-bit, XP 64-bit, 2000 (IPv6 only supported on Windows 2003 and Windows XP; IPsec on IPv4 only on Windows 2003 and Windows XP); Novell 5.1 and later; Apple Mac OS 9.x, OS X 10.2 and later; Red Hat Linux 7.x and later; SuSE Linux 8.x and later; HP-UX 10.20, 11.x, 11.i; Solaris 2.5 and later (SPARC systems only); IBM AIX 3.2.5 and later 1; MPE-iX; Citrix MetaFrame Server; Windows Terminal Services
Networking protocol supported	IPv6: DHCPv6, HTTP, HTTPS, Port 9100, IP Direct Mode, LPD, IPP, MLDv6, ICMPv6, Apple Bonjour Compatible, FTP, WS-Discovery; IPv4: FTP, IPP2, Auto-IP, Apple Bonjour Compatible, Telnet, SLP, IGMPv2, BOOTP/DHCP, WINS, SNMPv1/v2c/v3, TFTP, HTTP, HTTPS, Port 9100, LPD, IP Direct Mode; Other: IPX/SPX, AppleTalk, NetWare NDS, Bindery, NDPS, iPrint
<b>Dimensions (w x d x h)</b>	788 x 639 x 1153 mm (31 x 25.2 x 45.4 inches)
<b>Weight</b>	124 kg (273 lbs)
<b>Environmental ranges</b>	
Operating temperature Relative humidity Altitude	Operating: 15 to 30° C (59 to 86° F); Recommended: 17 to 25° C (62.6 to 77° F) Operating: 10 to 80% relative humidity; Recommended: 30 to 70% relative humidity 0 to 2600 m (0 to 8530 ft)
<b>Acoustics</b>	
Power Pressure (bystander)	Active: 6.7 B(A), copying; 6.3 B(A), printing; ready, inaudible Active 52 dB(A), copying; 50 dB(A) printing; ready, inaudible



# HP Color LaserJet CM4730 MFP series

## Technical specifications

<b>Power requirements</b>	Input voltage: 110 to 127 VAC (+/- 10%), 50/60 Hz (+/- 2 Hz); 220 to 240 VAC (+/- 10%), 50/60 Hz (+/- 2 Hz)
<b>Power consumption<sup>1</sup></b>	
Active	720 watts
Active copy	760 watts
Ready	85 watts
Powersave	26 watts
Off	0.42 watts
<b>Compliance/safety</b>	EMC: CISPR 22:2005/EN 55022:2006 Class A, EN 61000-3-2:2000, EN 61000-3-3:1995, EN55024:1998, FCC Title 47 CFR, Part 15 Class A/ICES-003, Issue 4/GB9254:1998, GB17625.1:2003, EMC Directive 89/336/EEC and the Low Voltage Directive 73/23/EEC and carries the CE-Marking accordingly  Telecom: TBR21:1998; EG 201 121:1998, FCC Part 68, Industry Canada CS03, NOM-151-SCTH-1999 (Mexico), PTC-200 (New Zealand), AS/ACIF 5002:2001 (Australia), IDA PSTN1 (Singapore), TPS002.01 (Malaysia), IG 0005-11 (Taiwan), HKTA 2011 (Hong Kong), YD514, YD/T589, YD703, GB3382 (China)  Safety: Argentina (TUV S Mark-Rs.92/98/Ds.1009/98), Australia (AS/NZ 3260), Canada (cUL-CAN/CSAC22.2 No.60950-1-03), China (GB4943), Czech Republic (CSN-IEC 60950-1; IEC 60825-1), Estonia (EEIEN60950-1; IEC 60825-1), EU (CE Mark-Low Voltage Directive 73/23/EEC), Germany (TUV- EN60950-1; IEC 60825-1), Hungary (MEEI- IEC 60950-1; IEC 60825-1), Lithuania (LS- IEC 60950-1; IEC 60825-1), (Russia (GOST- R50377), Slovakia (IEC 60950-1; IEC60825-1), Slovenia (SQI- IEC 60950-1; EN60825-1), South Africa (IEC 60950-1; IEC60825-1), USA (ULUL 60950-1; FDA-21 CFR Chapter 1 Subchapter J for lasers). Class 1 Laser/LED Product.)
<b>Warranty</b>	One-year, next day, on-site limited warranty
<b>What's in the box</b>	HP Jetdirect Fast Ethernet embedded print server; power cord; IEEE 1284-C parallel cable; software drivers and documentation on CD; in-box documentation: Getting Started Guide; full capacity black, cyan, magenta, and yellow HP Color LaserJet print cartridges with HP ColorSphere toner; one 100-sheet multipurpose tray; one 500-sheet output bin. CM4730f also include: HP LaserJet MFP Analog Fax Accessory 300, phone cord, Fax Install Guide

- <sup>1</sup> Exact speed varies depending on the system configuration, software application, driver, and document complexity.  
<sup>2</sup> HP Digital Sending Software 4 is optional (not included, sold separately). Software is server based, server required. Trial is included. DSS 4 enables send-to-secondary email, send-to-folder, send-to-workflow, authentication, digital fax (send-to-LAN, Windows 2000, Internet).  
<sup>3</sup> HP recommends that the number of printed pages per month be within the stated range for optimum device performance, based on factors including supplies replacement intervals and device life over an extended warranty period.  
<sup>4</sup> Duty cycle is defined as the maximum number of pages per month of imaged output. This value provides a comparison of product robustness in relation to other HP LaserJet or HP Color LaserJet devices, and enables appropriate deployment of printers and MFPs.  
<sup>5</sup> Values subject to change. See [www.hp.com/support/dj4730](http://www.hp.com/support/dj4730) for current information. Power reported is the highest value measured using all standard voltages.

For more information, call your local Hewlett-Packard sales office or your nearest HP authorised dealer or visit us at [www.hp.com](http://www.hp.com)

### HP customer information centre (for product information)

Australia	13 23 47
China	800 820 2255
Hong Kong	800 93 8855
India	1600 425 4999 (from MTNL/BSNL LAN line) 3030 4499 (from mobile)
Indonesia	0800 1111 222
Korea	080 703 0700
Malaysia	1800 88 4848
New Zealand	0800 733 547
Philippines	1800 1441 6688
Singapore	1800 278 8100
Taiwan	0800 236 686
Thailand	+662 353 9000
Vietnam	+848 823 6215

### HP customer care centre (for post-sales service)

Australia	13 10 47
China	800 810 3888
Hong Kong	+852 3002 8555
India	1600 112 267
Indonesia	+62 21 350 3408
Korea	+82 23270 0700
Malaysia	1800 805 405
New Zealand	0800 449 553
Philippines	+63 2 867 3551
Singapore	+65 6 272 5300
Taiwan	+886 2 8722 8000
Thailand	+662 353 9000
Vietnam	+848 823 4530

For the following countries, please fax your queries to: +65 6275 6707

• Bangladesh • Bhutan • Brunei • Cambodia • Maldives • Nepal • Pakistan • Sri Lanka

## Ordering information

### Number

CB480A	HP Color LaserJet CM4730 MFP
CB481A	HP Color LaserJet CM4730f MFP

### Accessories and software

Q7521A	500-sheet stapler/stacker
Q7523A	700-sheet, 3-bin mailbox
Q3701A	HP LaserJet MFP Analog Fax Accessory 300
T1936AA	HP Digital Sending Software 4
T1936AA#UA0	HP Digital Sending Software—1 Device License
T1936AA#0AD	HP Digital Sending Software—5 Device License
T1936AA#0A9	HP Digital Sending Software—10 Device License
T1936AA#0AA	HP Digital Sending Software—50 Device License

### Supplies

Q6460A	HP Color LaserJet Black Print Cartridge (12,000 pages)
Q6461A	HP Color LaserJet Cyan Print Cartridge (12,000 pages)
Q6462A	HP Color LaserJet Yellow Print Cartridge (12,000 pages)
Q6463A	HP Color LaserJet Magenta Print Cartridge (12,000 pages)

### Media

Q6542A	HP Laser Paper, Soft Gloss, A4, 200 sheets
Q6550A	HP Laser Photo Paper, Matt, A4, 100 sheets
Q6547A	HP Laser Photo Paper, Glossy, A4, 200 sheets
Q6548A	HP Laser Photo Paper, Glossy, A3, 200 sheets
Q6614A	HP Photo Laser Paper 220 glossy, A4, 100 sheets
Q1298B	HP LaserJet Tough Paper, A4, 50 sheets
92296U	HP LaserJet Monochrome Transparency, A4, 50 sheets
C2936A	HP Color LaserJet Transparency, A4, 50 sheets
CHP370	HP Color Laser Paper 90gsm <sup>2</sup> , A4, 500 sheets
CHP350	HP Color Laser Paper 100gsm <sup>2</sup> , A4, 500 sheets
Q6616A	HP Superior Laser Paper 160 glossy, A4, 150 sheets
Q2399A	HP Everyday Paper <sup>3</sup> , A3, 500 sheets
Q2400A	HP Everyday Paper <sup>3</sup> , A4, 500 sheets
Q2398A	HP Everyday Paper <sup>3</sup> , Letter, 500 sheets
Q2396A	HP Premium Choice LaserJet Paper <sup>5</sup> , A3, 250 sheets
Q2397A	HP Premium Choice LaserJet Paper <sup>5</sup> , A4, 250 sheets

### Connectivity accessories

J7988G	HP Jetdirect en1700 USB 2.0 Print Server
J7942G	HP Jetdirect en3700 USB 2.0 Print Server (print only)
J7951G	HP Jetdirect ew2400 wireless USB 2.0 Print Server (print only)
J7983G	HP Jetdirect 510x Parallel Print Server (print only)
J3263G	HP Jetdirect 300x Parallel Print Server (print only)
J7961G	HP Jetdirect 635x EIO Print Server
J7997G	HP Jetdirect 630x EIO Print Server

### Memory and storage

Q7721A	128 MB 200-Pin DDR SDRAM DIMM
Q7722A	256 MB 200-Pin DDR SDRAM DIMM
Q7723A	512 MB 200-Pin DDR SDRAM DIMM

### Cables

C2946A	Parallel cable, 3-meter IEEE 1284 (a to c)
C2947A	Parallel cable, 10-meter IEEE 1284 (a to c)

### Service and support

C8091A	Staple cartridge (5000 staples) for stapler/stacker
Q6496A	ADF replacement Mylar sheets
Q5997A	ADF maintenance kit
Q7502A	110 volt image fuser
Q7503A	220 volt image fuser
Q7504A	110 volt image transfer kit
HC116A/E	3 year, warranty service, 4-hour response, standard business hours (9 x 5)
HC119A/E	3 year, warranty service, 4-hour response, extended business hours (13 x 5)
HC113A/E	3 year, next business day response
U2009A/E	Hardware installation service
U2010A/E	Networked hardware installation and configuration

### Third-party solutions

[www.hp.com/go/gsc](http://www.hp.com/go/gsc)

### For more information on

HP Care Pack, visit: <http://www.hp.com/apac/hpservices/carepackHP>

Instant Support Professional Edition (ISPE), visit:

<http://instantsupport.asiapac.hp.com>

For more information on support, visit: <http://www.hp.com/support>

For more information on HP genuine parts, visit: <http://www.hp.com/go/hpparts>

For specific warranty details, please check with your local country resellers.



© 2007 Hewlett-Packard Development Company, L.P. The information contained herein is subject to change without notice. The only warranties for HP products and services are set forth in the express warranty statements accompanying such products and services. Nothing herein should be construed as constituting an additional warranty. HP shall not be liable for technical or editorial errors or omissions contained herein.

Printed in Singapore, 3000-0700186-EEP, March 2007



i n v e n t